

# **The Open Group**

## **Exam OGO-023**

### **ArchiMate 2 Combined Part 1 and 2 Examination**

**Verson: Demo**

**[ Total Questions: 10 ]**

**The Open Group OGO 023 : Practice Test**

---

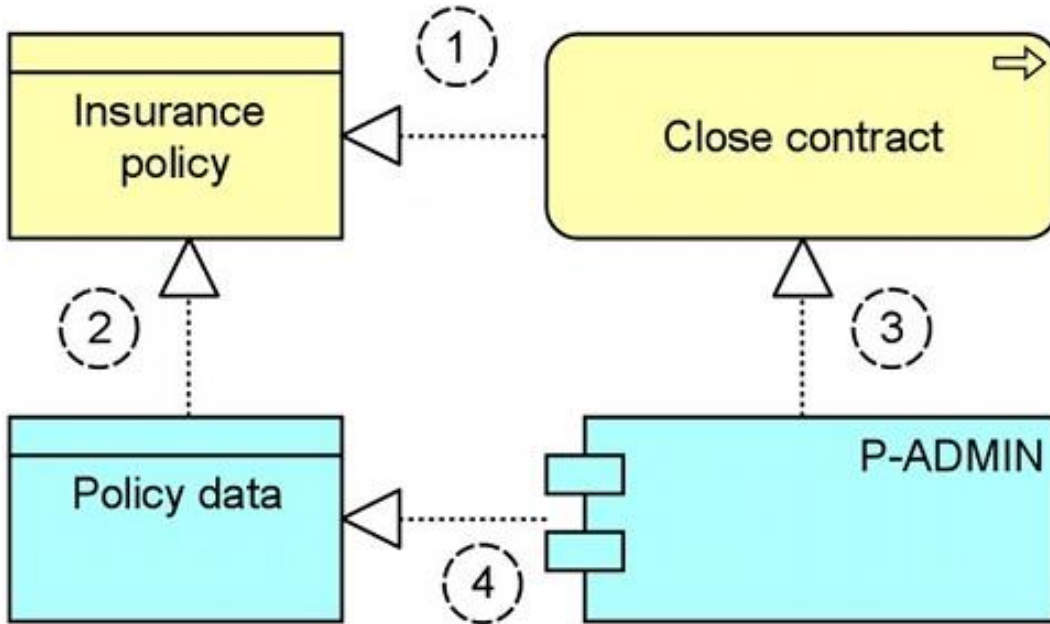
**Topic break down**

<b>Topic</b>	<b>No. of Questions</b>
<b>Topic 1: Part 1 Questions</b>	<b>9</b>
<b>Topic 2: Part 2 Scenarios</b>	<b>1</b>

### Topic 1, Part 1 Questions

#### Question No : 1 - (Topic 1)

Consider the following diagram:



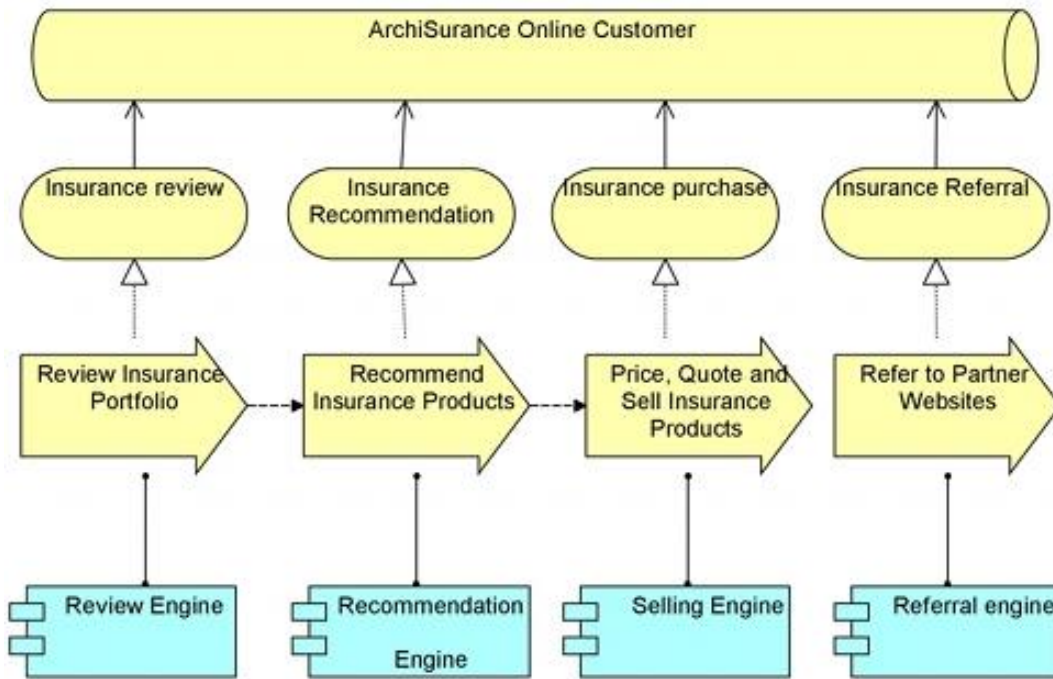
Which of the numbered relationships is correct according to the ArchiMate metamodel?

- A. Number 1
- B. Number 2
- C. Number 3
- D. Number 4

**Answer: B**

#### Question No : 2 - (Topic 1)

The following is an example model for the ArchiMate Service Realization viewpoint:



Which stakeholder concerns does the Service Realization viewpoint address?

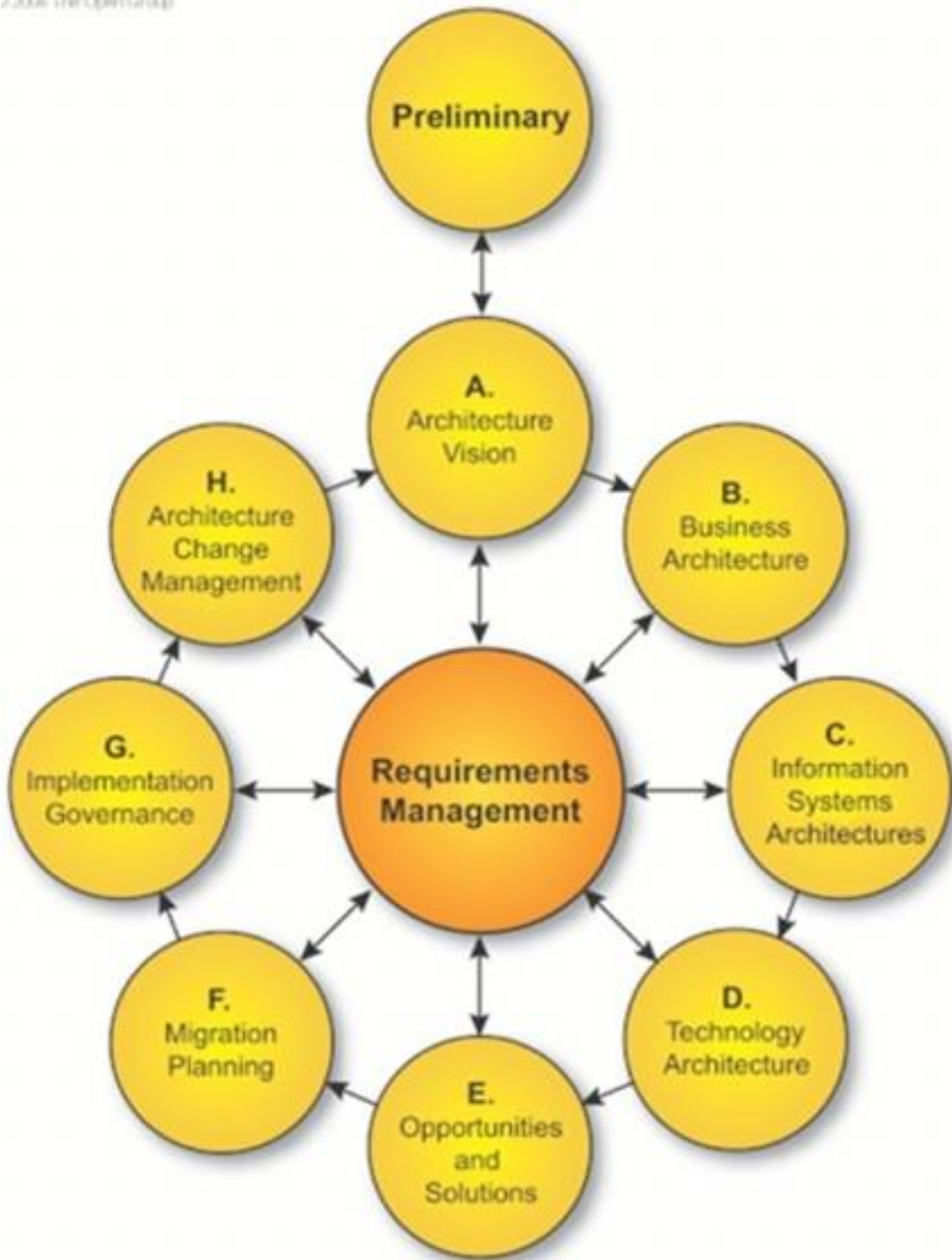
- A. Added value of business processes, consistency and completeness, responsibilities
- B. Identification of competencies, authority and responsibilities
- C. Application dependencies, performance, scalability
- D. Structures and dependencies of the used data and information

**Answer: A**

**Question No : 3 - (Topic 1)**

Which of the following phases of the TOGAF ADM correspond most closely to the ArchiMate Implementation and Migration Extension?

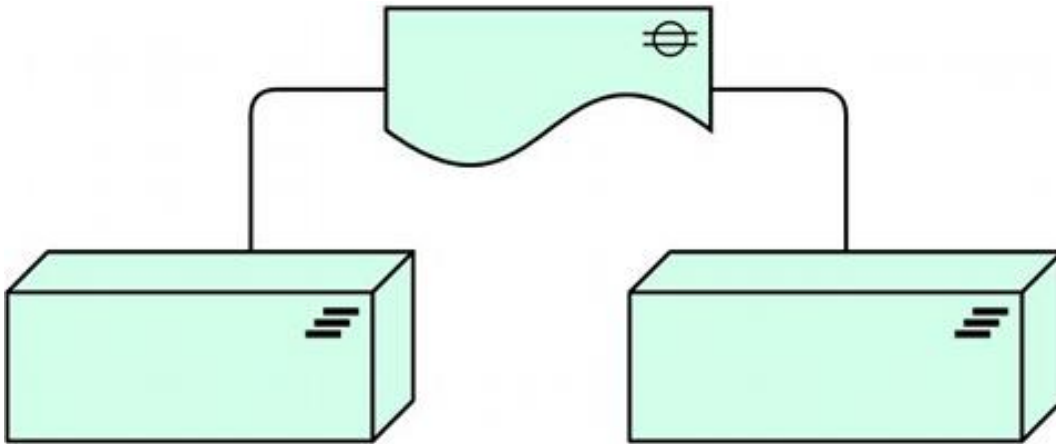
7/20/2016 10:48:00 AM



- A. Preliminary, Architecture Vision, Requirements Management
- B. Opportunities and Solutions, Migration Planning, Implementation Governance
- C. Architecture Change Management
- D. Business Architecture, Information Systems, architectures, Technology Architectures

Answer: B

Consider the following diagram:



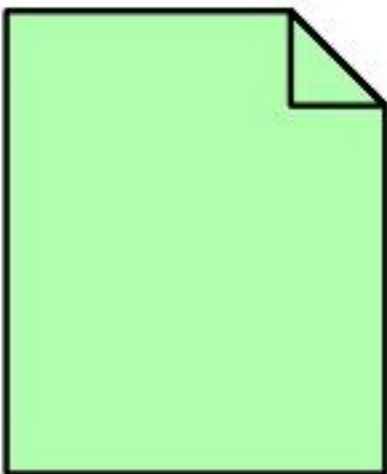
Which of the following best describes what this diagram represents?

- A. Two plateaus with a transition architecture
- B. A deliverable exchanged between two projects
- C. A gap associated with two plateaus
- D. Two nodes connected by a communication path

**Answer: C**

**Question No : 5 - (Topic 1)**

Consider the following symbol:



Which of the following best describes what this symbol represents?

## The Open Group OG0-023 : Practice Test

---

- A. A modular, deployable, and replaceable part of a software system that encapsulates its behavior and data and exposes these through a set of interfaces
- B. A perceptible form of the information carried by a business object
- C. A physical piece of data used or produced in software development, or by system deployment and operation
- D. A software environment for specific types of components and objects that are deployed on it

**Answer: C**

### Question No : 6 - (Topic 1)

Consider the following statement:

1. An application component is a self-contained unit of functionality.
2. An application component may perform one or more application functions.
3. The name of an application component should preferably be a noun.

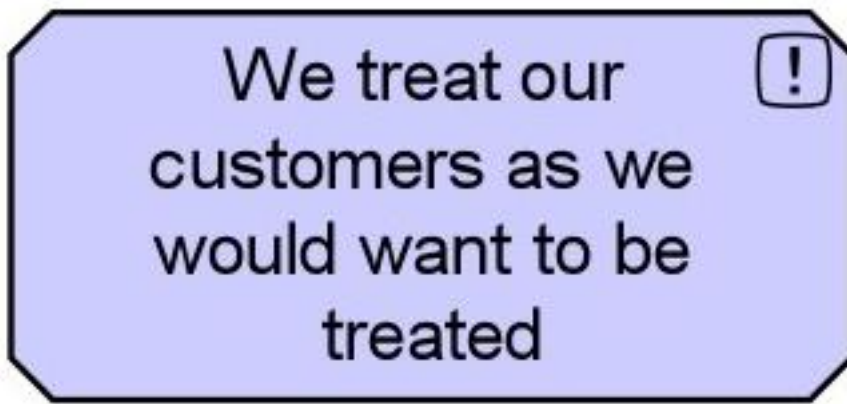
Which of the following answers regarding the statement is correct?

- A. 1 and 2 are correct, 3 is not correct
- B. 2 and 3 are correct, 1 is not correct
- C. 1 and 3 are correct, 2 is not correct
- D. 1, 2 and 3 are all correct

**Answer: D**

### Question No : 7 - (Topic 1)

Consider the following symbol that represents information about a major systems and process transformation project:



What concept does this symbol represent?

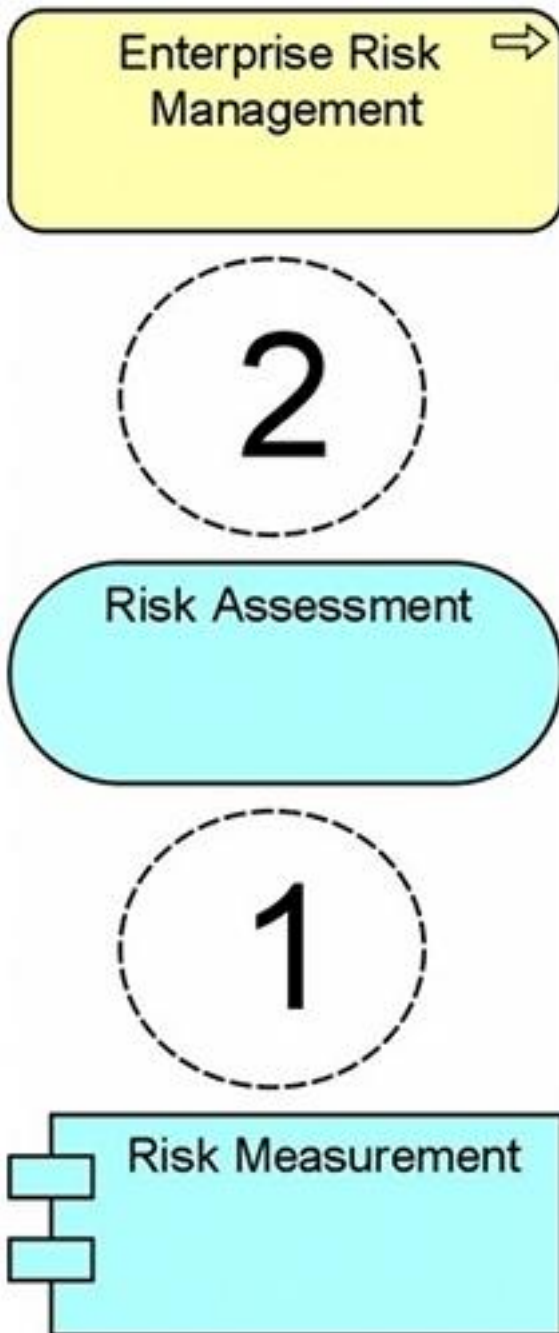
- A. A constraint
- B. A principle
- C. A goal
- D. A requirement

**Answer: B**

**Question No : 8 - (Topic 1)**

ArchiSurance, a Risk Assessment service provided by a Risk Measurement application enables actuaries to assess and mitigate financial risks as part of the Enterprise Risk Management process.





Which combination of relationships, when added to this diagram, would best represent this situation?

- A. 1. Realization and 2. Assignment
- B. 1. Used by and 2. Realization
- C. 1. Realization and 2. Realization
- D. 1. Realization and 2. Used By

**Answer: D**

**Question No : 9 - (Topic 1)**

Which concept is typically used to model hardware systems such as mainframes, PCs, or routers?

- A. System software
- B. Network
- C. Artifact
- D. Device

**Answer: D**

**Topic 2, Part 2 Scenarios**

**Question No : 10 - (Topic 2)**

Scenario

Please read this scenario prior to answering the question

Independent insurance brokers that work with ArchiSurance have complained of difficulty in communicating with salespeople and other personnel at ArchiSurance. They have said that email is too clumsy and slow for working on urgent deals, people do not always answer their mobile phones, and it is difficult to tell whether an individual is available. They have also complained that it is too time-consuming for them to manage their commission payments using an older web application that requires them to print out and mail forms for making some routine changes, and also does not work on many mobile devices. Some brokers have said that it is easier to do business with ArchiSurance competitors that provide easy-to-use mobile applications for both general communication and commission management. In fact, the ArchiSurance Vice President of Sales and Chief Marketing Officer have both expressed concern about reports from the ArchiSurance market research department that the company is gradually losing market share with some of the same brokers that have been complaining. These executives are also concerned that ArchiSurance may not meet the targets for revenue growth.

Upon hearing about these issues, the ArchiSurance Chief Information Officer (CIO) hired a consultant to design a new mobile infrastructure for broker interaction. This infrastructure is required to enable easier communication with ArchiSurance brokers in order to help the company increase its market share with each of them and consequently attain its targets for revenue growth. In order to ensure that the new infrastructure would meet these goals, the CIO told the consultant that the new infrastructure must make it easy for ArchiSurance

---

## The Open Group OGO-023 : Practice Test

---

to develop and deploy applications and content for its brokers. It must provide federated authentication and an encrypted communication channel as well as instant messaging and presence services.

The new mobile broker interaction infrastructure architecture includes a number of system software components. A secure reverse proxy authenticates users and provides an encrypted channel to communicate with them. The proxy uses a service provided by directory server software to authenticate users. The directory server communicates with the ArchiSurance federation server, which in turn communicates with peer federation servers hosted by trusted brokerage organizations. Once the user is authenticated, the ArchiSurance broker portal uses the ArchiSurance web content management system to assemble authorized and relevant content for each broker. In order to provide presence services, a unified communications (UC) server exchanges information with the directory server and an instant messaging server.

All of these components are hosted on a single physical hardware platform hosting a virtualized server infrastructure. The server infrastructure is connected to a converged local area network (LAN), which is also connected to a commercial wide area network (WAN) over which ArchiSurance communicates with its brokers.

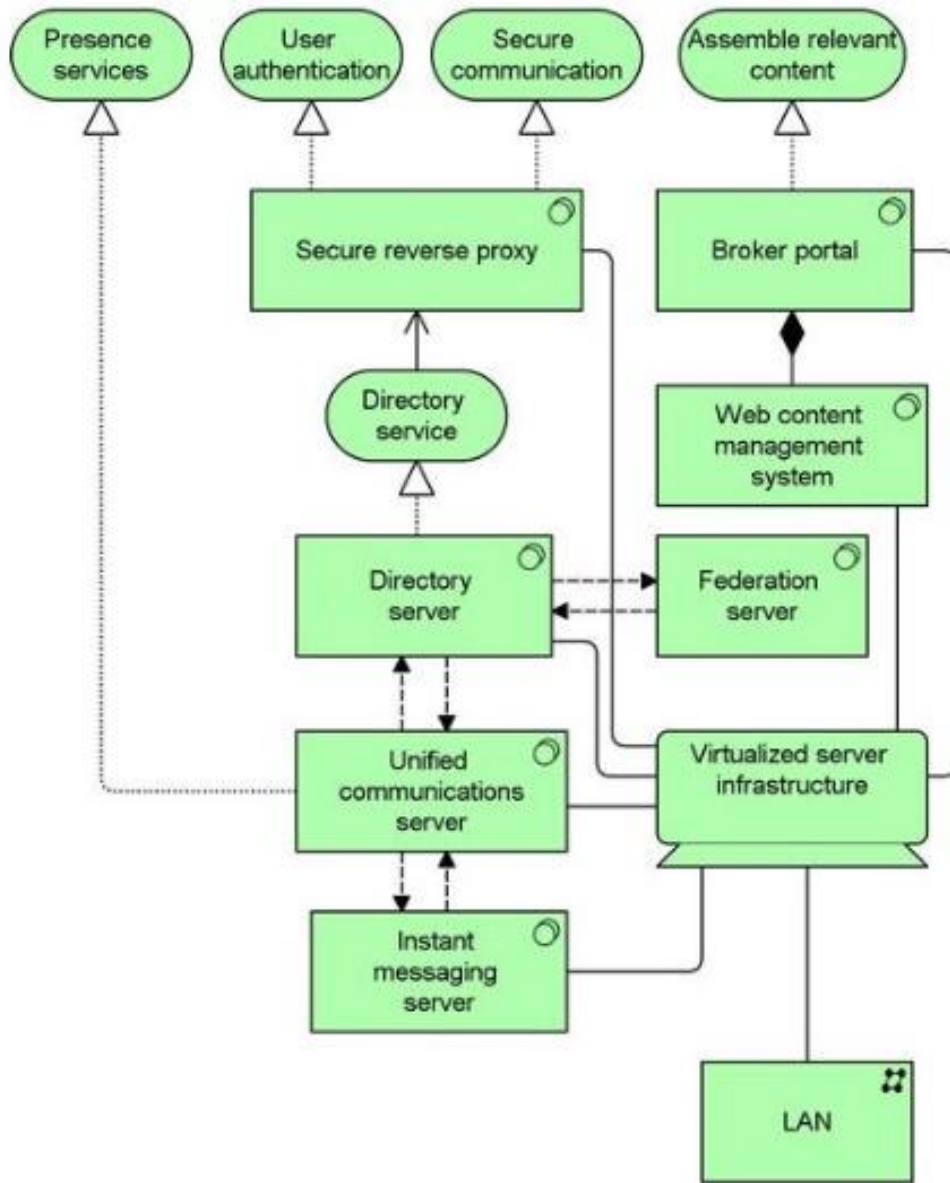
Refer to the Scenario

The head of IT infrastructure engineering has asked you to model the ArchiSurance infrastructure for broker interaction. You must show the system software, network and server components and the flows between them. You must also show the services that the system software components provide. It is not necessary to model the wide area network (WAN) or the components hosted by ArchiSurance brokers.

Which answer provides the most complete and accurate model?

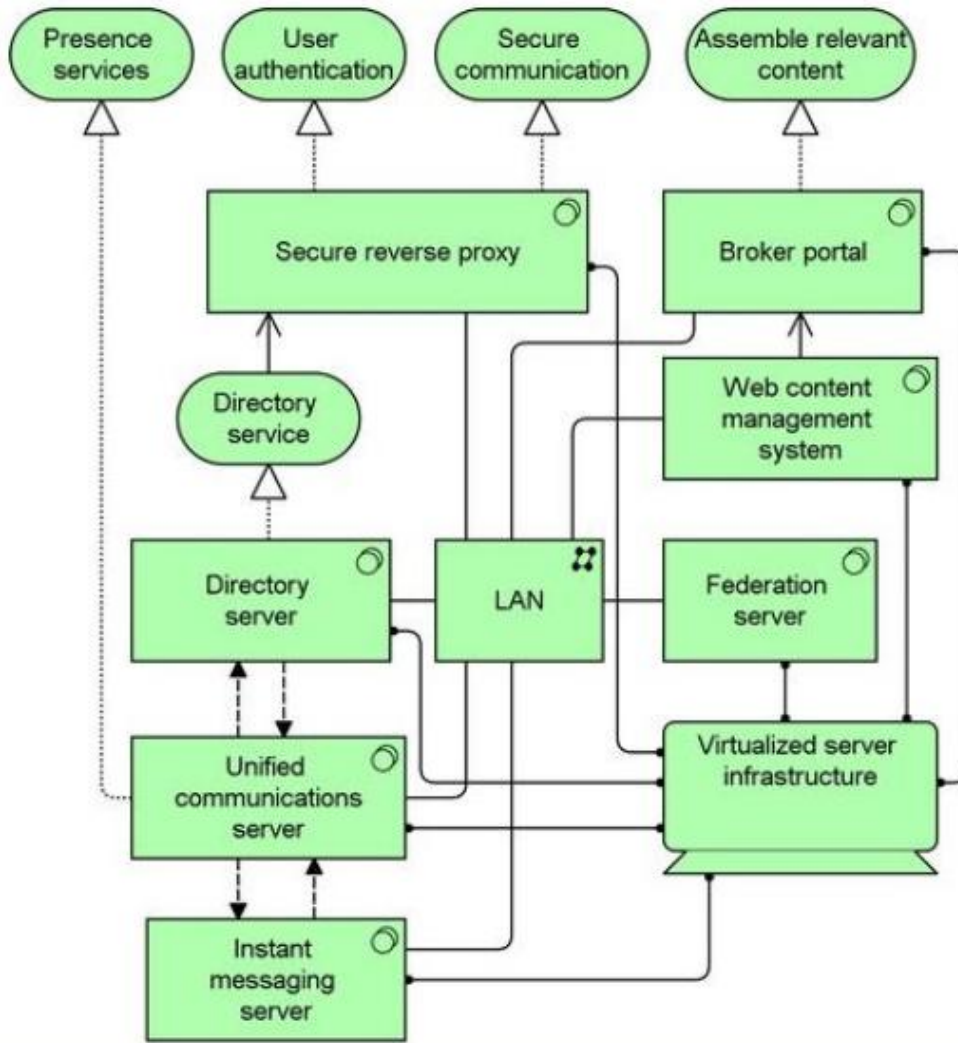
The Open Group OG0-023 : Practice Test

A.



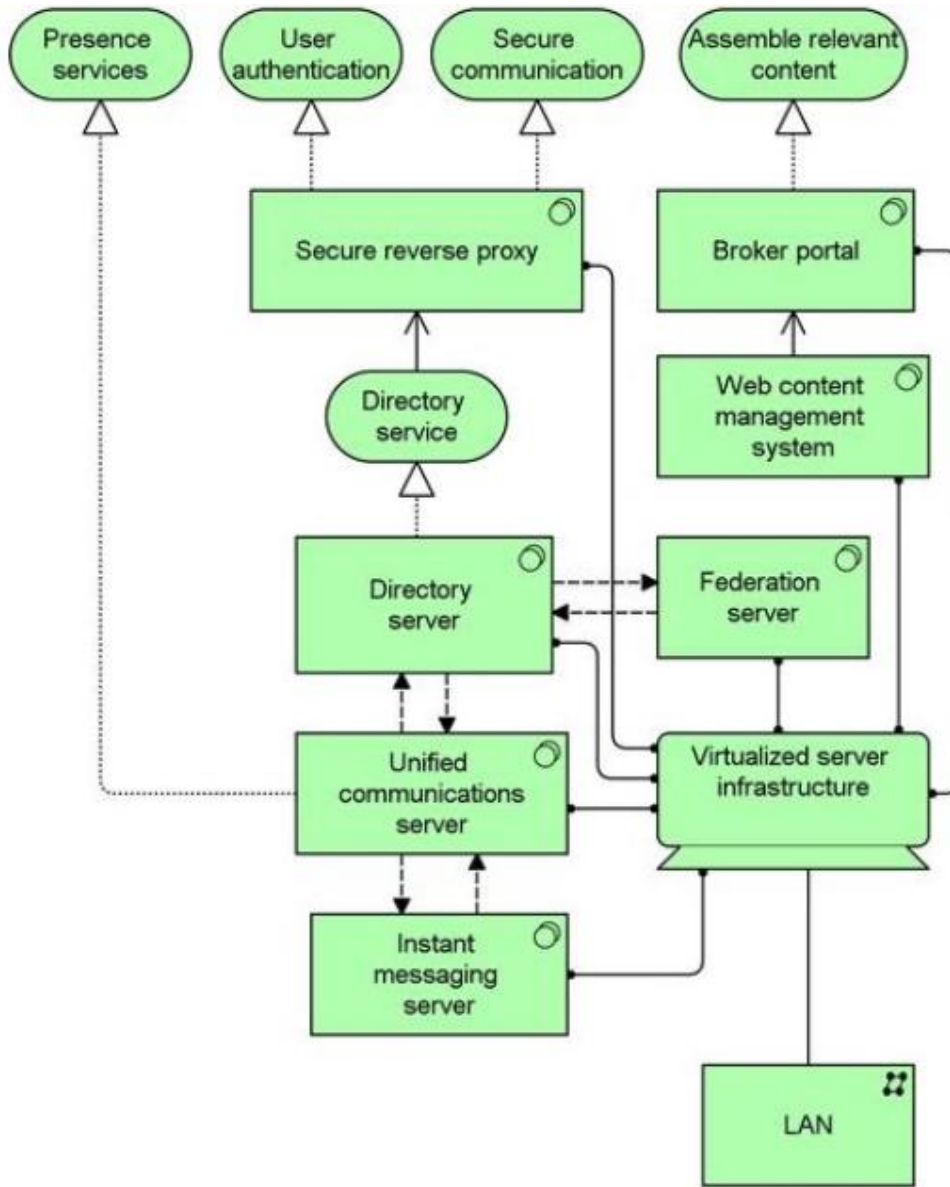
The Open Group OG0-023 : Practice Test

B.

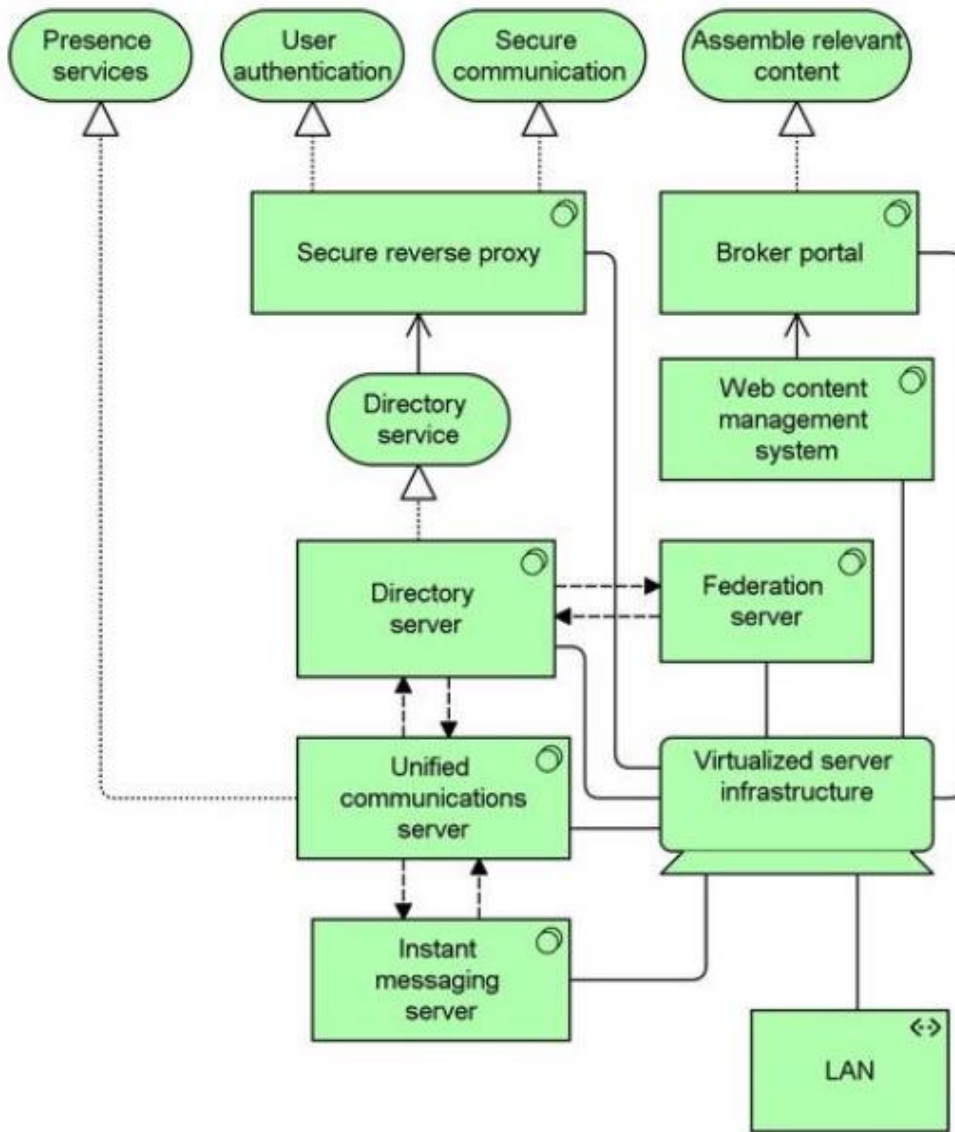


The Open Group OG0-023 : Practice Test

C.



D.



- A. Option A
- B. Option B
- C. Option C
- D. Option D

Answer: C

## **Thank You For Trying OG0-023 PDF Demo**

**To try our OG0-023 Premium Files visit link below:**

**<https://examsland.com/latest-exam-questions/OG0-023/>**

**Start Your OG0-023 Preparation**

**Use Coupon **EL25** for extra 25% discount on the purchase of Practice Test Software.**