

SAP

C_THR85_2411 Exam

**SAP Certified Associate - Implementation Consultant - SAP
SuccessFactors Succession Management**

**Questions & Answers
Demo**

Version: 4.0

Question: 1

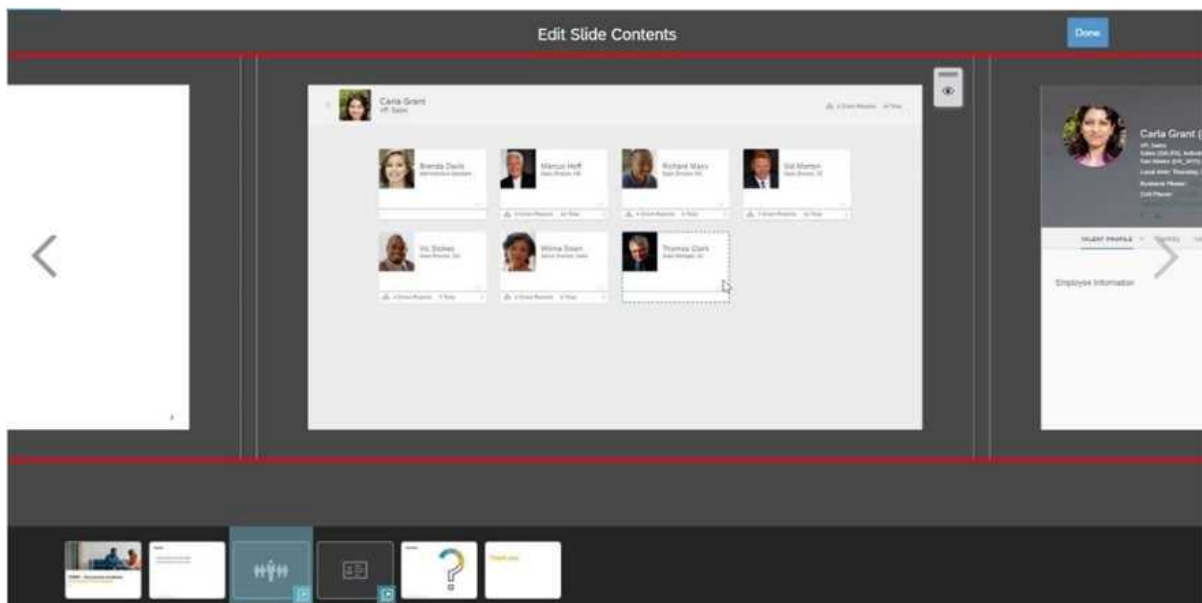
What must you do to allow a user to view the Nominate button for Talent Search V2?Note: There are 2 correct answers to this question.

- A. Select the checkbox next to the candidate's name after performing a search.
- B. Change the criteria filters when viewing search results.
- C. Modify the Talent Search section of the Succession Data Model.
- D. Grant a user the appropriate permissions to nominate successors.

Answer: A D

Question: 2

What can a user accomplish using the eye icon on the screen shown here?



Note: There are 2 correct answers to this question.

- A. Show or hide the slide.
- B. Show or hide hotspots.
- C. Show or hide all direct reports.
- D. Show or hide one or more direct reports.

Answer: C D

Question: 3

Using the Legacy Position-Based Nomination Method, where can fields be added for the Position dialog?

- A. From the Succession Data Model XML

- B. From Configure Object Definition
- C. From the Succession Org Chart XML
- D. From Employee Files

Answer: C

Question: 4

Which of the following features are available when you import background data using the Import Extended User Information feature?Note: There are 2 correct answers to this question.

- A. The data can include many to one data.
- B. The data can include a date field.
- C. The data CANNOT include a user ID.
- D. The import file includes multiple sections of data.

Answer: B D

Question: 5

What information can be included in a Trend Data Export file?Note: There are 3 correct answers to this question.

- A. Live profile data
- B. Talent flags
- C. Labels
- D. Calibration session data
- E. Performance form data

Answer: A D E

Thank You For Trying C_THR85_2411 PDF Demo

To try our C_THR85_2411 Premium Files visit link below:

https://examsland.com/latest-exam-questions/C_THR85_2411/

Start Your C_THR85_2411 Preparation

Use Coupon **EL25 for extra 25% discount on the purchase of Practice Test Software.**