

Microsoft

Exam 70-697

Configuring Windows Devices

Version: Demo

[Total Questions: 10]

Microsoft 70-697 : Practice Test

Topic break down

Topic	No. of Questions
Topic 2: Plan desktop and device deployment	1
Topic 10: Mixed Questions	9

Topic 2, Plan desktop and device deployment

Question No : 1 - (Topic 2)

You have a Windows 10 Enterprise computer named Computer1 that has the Hyper-V feature installed. Computer1 hosts a virtual machine named VM1. VM1 runs Windows 10 Enterprise. VM1 connects to a private virtual network switch.

From Computer1, you need to remotely execute Windows PowerShell cmdlets on VM1.

What should you do?

- A. Run the winrm.exe command and specify the `-s` parameter.
- B. Run the Powershell.exe command and specify the `-Command` parameter.
- C. Run the Receive-PSSession cmdlet and specify the `-Name` parameter.
- D. Run the Invoke-Command cmdlet and specify the `-VMName` parameter.

Answer: D

Explanation:

We can use Windows PowerShell Direct to run PowerShell cmdlets on a virtual machine from the Hyper-V host. Because Windows PowerShell Direct runs between the host and virtual machine, there is no need for a network connection or to enable remote management.

There are no network or firewall requirements or special configuration. It works regardless of your remote management configuration. To use it, you must run Windows 10 or Windows Server Technical Preview on the host and the virtual machine guest operating system.

To create a PowerShell Direct session, use one of the following commands:

Topic 10, Mixed Questions

Question No : 2 - (Topic 10)

You administer a corporate network. Employees use docking stations for Windows 10 devices when the

employees are working in their offices.

The wireless adapters of the devices are connected to a specific network. The docking stations are connected

to a separate network that uses twisted pair cabling.

You need to ensure that the devices can access all resources from each network using either network adapter.

What should you do?

- A. Configure a network bridge.
- B. Configure Internet Connection Sharing (ICS).
- C. Configure VPN Reconnect.
- D. Turn on Network Discovery.

Answer: C

Question No : 3 - (Topic 10)

A company has Windows 10 Enterprise client computers. All user data is stored locally. Each data file has a

system access control list (SACL).

You need to ensure that an event is generated when a user modifies a local file.

Which audit policy setting should you configure?

- A. Audit process tracking
- B. Audit object access
- C. Audit policy change
- D. Audit privilege use

Answer: B

Question No : 4 - (Topic 10)

You support Windows 10 Enterprise desktop computers and tablets that are members of an Active Directory

domain. The domain includes Active Directory Certificate Services. All users use virtual smart cards to log on to

their computers.

A domain user wants to log on to both his desktop computer and his tablet computer by using the same domain

user account.

You need to configure the desktop and tablet computers to support two-factor authentication for the same

domain user account.

What should you do?

A. Enroll the user for two separate certificates based on the Smartcard Logon template. Install one certificate

in a virtual smart card on each of the user's computers/

B. After the user has logged on to one computer, disable the Trusted Platform Module (TPM) on the second

computer. Run the tpmvscmgr.exe utility on each of the computers.

C. Issue a temporary physical smart card. Use this smart card for an initial logon on each computer, then

disconnect the tablet from the office network and destroy the temporary smart card.

D. Export the private key from the desktop computer. Import the private key to the tablet.

Answer: A

Question No : 5 - (Topic 10)

You administer Windows 10 Enterprise client computers in your company network. The company has an Active

Directory Domain Services (AD DS) domain named contoso.com. The domain contains a DNS server that is

configured to lease IPv4 and IPv6 addresses.

A client computer named Computer1 is configured to obtain IPv4 and IPv6 addresses automatically.

A user reports that an IPv6-enabled application named App1 is not working on Computer1.

You discover that Computer1 has an IPv6 address prefix of FE80::. You are able to ping Computer1

successfully by using IPv4, but when you use IPv6, your ping requests time out.

You need to ensure that Computer1 will support App1.

Which command should you use?

- A. ipconfig /renew6
- B. ipconfig /setclassid6
- C. ipconfig /renew
- D. ipconfig /release6

Answer: C

Explanation:

Explanation

References: <https://technet.microsoft.com/en-us/library/cc938688.aspx>

Question No : 6 - (Topic 10)

You have a computer named Computer1 that runs Windows 10 Enterprise.

You need to identify the locations that you can select as a File History drive.

What are two possible locations? Each correct answer presents a complete solution?

- A. the operating system volume
- B. an unformatted partition
- C. a non-system volume
- D. a network share

Answer: C,D

Explanation:

Explanation

You can use a non-system volume as a File History drive. This can be a volume on a hard drive

in a computer, a Virtual Hard Drive (VHD) or an external USB drive.

You can also use a network share as a File History drive.

In the File History Control Panel item, you can click the "Select Drive" option. This will display a list of all

detected drives that are suitable for use as the File History drive. Under the list of drives, there is a link "Add

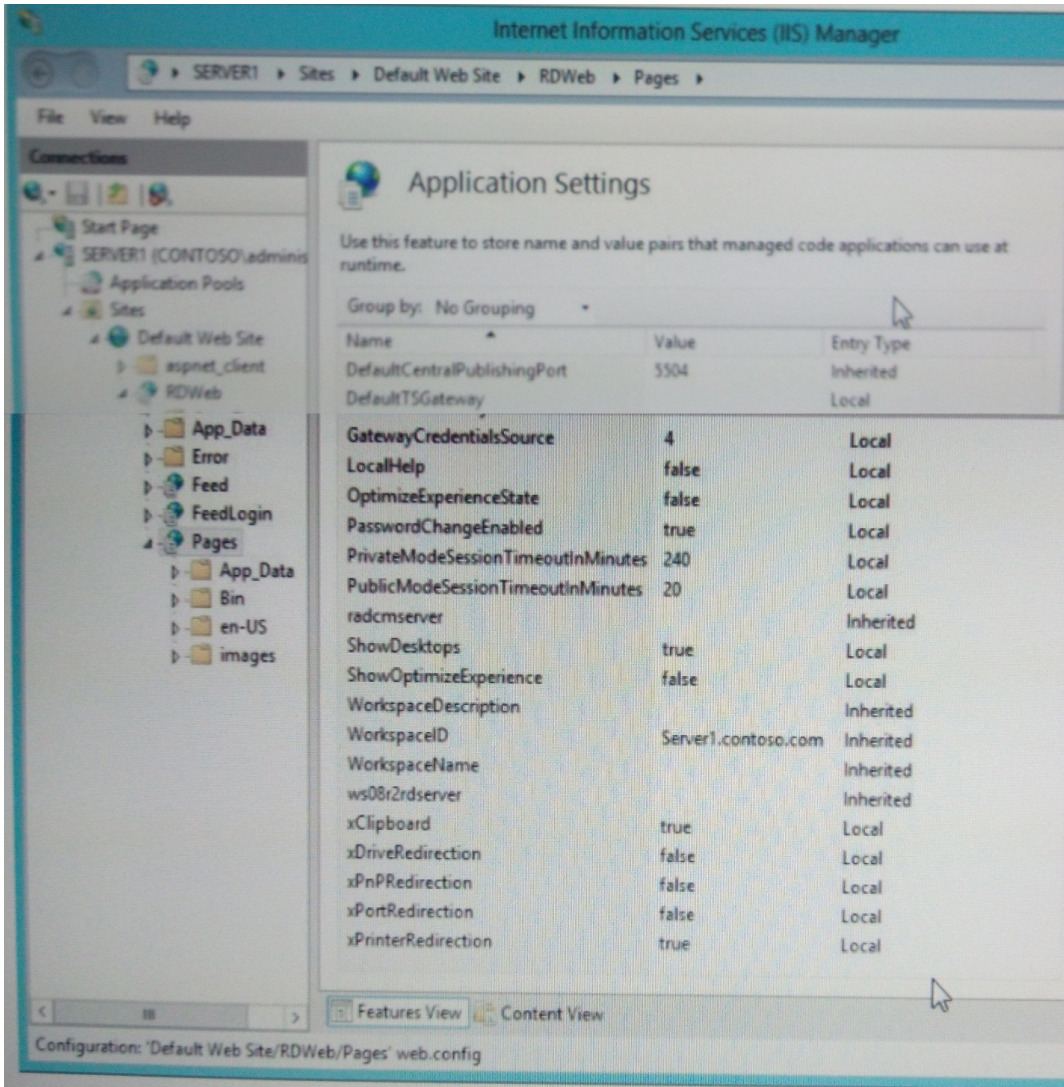
Network Location". You can click the link and browse to or enter the path to the network share.

Question No : 7 HOTSPOT - (Topic 10)

You have an Active Directory domain named contoso.com. You have a server that runs Windows Server 2012 R2 and that is a Remote Desktop server.

The RD Web Access Web application settings are shown in the following graphic.

Microsoft 70-697 : Practice Test



Use the drop-down menus to select the answer choice that completes each statement based on the information presented in the graphic.

NOTE: Each correct selection is worth one point.

Answer Area

When a user connects to the RDWeb site, [answer choice] will appear.

only RemoteApps
only Remote Desktop Connections
both RemoteApps and remoteDesltop Connections

Users that have Android devices can [answer choice] from the RDWeb site.

never change their passwords
only change expired passwords
only change unexpired passwords

Answer:

Answer Area

When a user connects to the RDWeb site, [answer choice] will appear.

only RemoteApps
 only Remote Desktop Connections
 both RemoteApps and remoteDesktop Connections

Users that have Android devices can [answer choice] from the RDWeb site.

never change their passwords
 only change expired passwords
 only change unexpired passwords

Question No : 8 - (Topic 10)

You are a systems administrator for your company. The company has employees who work remotely by using a

virtual private network (VPN) connection from their computers, which run Windows 10 Enterprise.

These employees use an application to access the company intranet database servers. The company recently

decided to distribute the latest version of the application through using a public cloud.

Some users report that every time they try to download the application by using Internet Explorer, they receive a

warning message that indicates the application could harm their computer.

You need to recommend a solution that prevents this warning message from appearing, without compromising

the security protection of the computers.

What should you do?

- A. Publish the application through a public file transfer protocol (FTP) site.
- B. Publish the application through an intranet web site.
- C. Instruct employees to disable the SmartScreen Filter from within the Internet Explorer settings.
- D. Digitally sign the application by using a trusted certificate, and then update the default

App Package

Deployment policy on all computers.

Answer: D

Question No : 9 - (Topic 10)

You support Windows 10 Enterprise tablets. The tablets have the Application Virtualization (App-V) client installed.

Company policy requires that all published App-V applications be available to users only when they are connected to the company network.

You need to configure the tablets so that the company policy requirements are enforced.

What should you do?

- A. Configure mandatory profiles for tablet users.
- B. Reset the App-V client FileSystem cache on the tablets.
- C. Disable the Disconnected operation mode on the tablets.
- D. Change user permissions to the App-V applications.

Answer: C

Question No : 10 - (Topic 10)

At home, you use a Windows 10 desktop computer. At work, you use a Windows 10 laptop that is connected to a corporate network. You use the same Microsoft account to log on to both computers.

You have a folder with some personal documents on your desktop computer. The folder must be available and synced between both computers.

You need to ensure that the latest version of these files is available. What should you do?

- A. Create a folder by using OneDrive for Windows. Move all of the personal documents to the new folder.
- B. Move the folder to the Libraries folder. Go to PC Settings. Under Sync your settings, enable App settings.
- C. Right-click the folder and click Properties. Under Security, provide Full Control for the

Microsoft account.

D. Right-click the folder and select Share With, and then select Homegroup (view and edit).

Answer: A

Explanation:

To save a doc you're working on to OneDrive, select a OneDrive folder from the list of save locations. To move files to OneDrive, open File Explorer and then drag them into a OneDrive folder.

Note: OneDrive (previously SkyDrive, Windows Live SkyDrive, and Windows Live Folders) is a file hosting service that allows users to sync files and later access them from a web browser or mobile device. Users can share files publicly or with their contacts; publicly shared files do not require a Microsoft account to access them. OneDrive is included in the suite of online services formerly known as WindowsLive.

Thank You For Trying 70-697 PDF Demo

To try our 70-697 Premium Files visit link below:

<https://examsland.com/latest-exam-questions/70-697/>

Start Your 70-697 Preparation

Use Coupon **EL25 for extra 25% discount on the purchase of Practice Test Software.**