

Microsoft

Exam 70-686

Pro: Windows 7, Enterprise Desktop Administrator

Verson: Demo

[Total Questions: 10]

Microsoft 70-686 : Practice Test

Topic break down

Topic	No. of Questions
Topic 1: Mixed Questions	9
Topic 2: Scenario A	1

Topic 1, Mixed Questions

Question No : 1 - (Topic 1)

Your company has a custom Web application that uses a self-signed SSL certificate. The company has an internal certification authority (CA) and uses autoenrollment. When external users attempt to start the Web application, Internet Explorer displays an error message that recommends closing the Web page rather than continuing to the application.

You need to ensure that Internet Explorer does not display the error message. What should you do?

- A. Install the current certificate into the personal store on each client computer. Add the applications URL to the Trusted Sites zone in Internet Explorer.
- B. Install the current certificate into the computer store on each client computer.
- C. Purchase and install a commercial certificate on the CA server. Ensure that users trust the issuing CA.
- D. Issue a root certificate from the internal CA on the external users computers.

Answer: B

Question No : 2 - (Topic 1)

You plan to upgrade Windows Vista to Windows 7 on a computer named Computer01. You run ScanState and store the results on a remote computer at \\Server01\mystore. After the ScanState command completes, a user customizes a profile and adds mission-critical data.

You attempt to run ScanState again but it fails.

You need to overwrite Computer01's existing information on Server01.




Which command line options should you use to execute the ScanState command?
(Choose all that apply.)

- A. /efsxopyraw
- B. /v:13
- C. \\Server01\mystore
- D. /o

Answer: C,D

Question No : 3 HOTSPOT - (Topic 1)

Active Directory Domain Services (AD DS) is running on windows Server 2008 R2.

-  All user objects are located in the Boston Users Organizational Unit (OU) or the San Diego Users OU.
-  All client computer objects are in the Boston Computers OU or in the San Diego Computers OU.
-  All domain controller computer objects are in their default location.

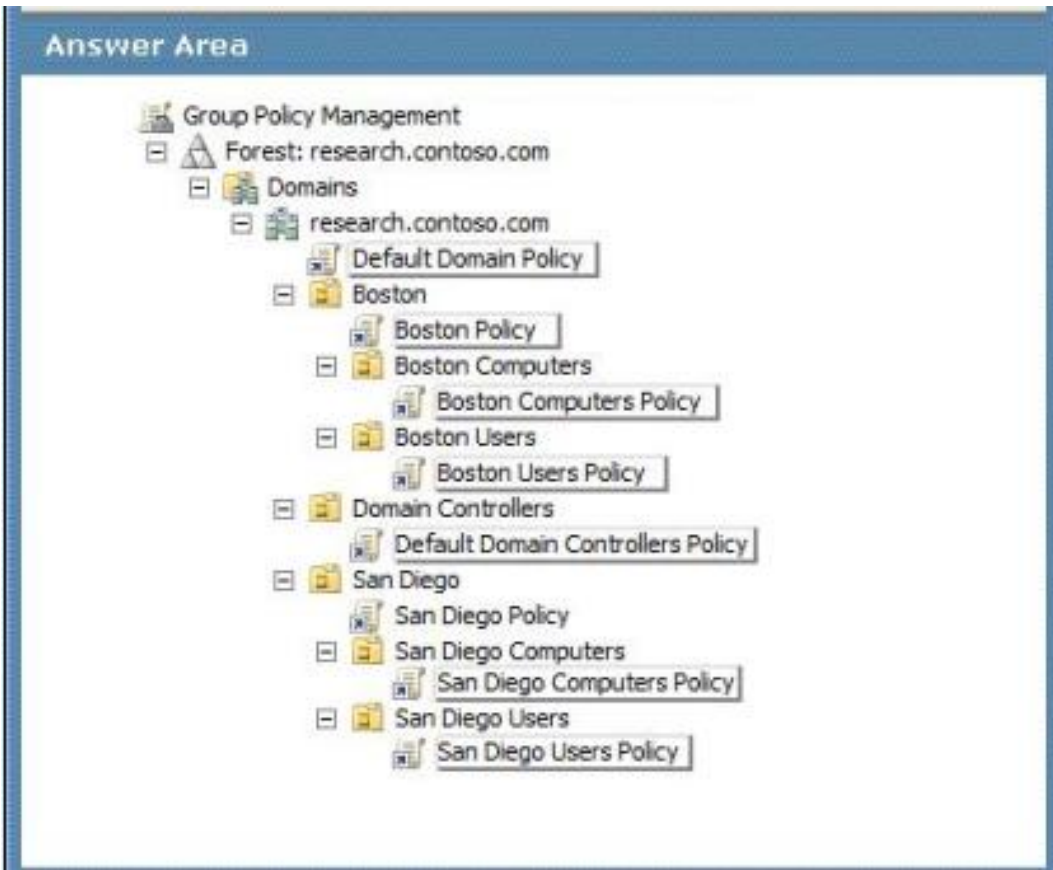
You decide to audit changes to AD DS.

Administrative users in San Diego add new users to the domain without approval. You configure the audit policy settings in the San Diego Policy Group Policy object (GPO) and set up auditing in object System Access Control Lists, YOU verify that the GPO is being applied to the resources in the San Diego OUs, but auditing still does not work.

You need to select the GPO to ensure that users added by the San Diego administrative users are audited.

Which GPO should you select? To answer, select the appropriate setting or settings in the work area.

Microsoft 70-686 : Practice Test



Answer:



Question No : 4 - (Topic 1)

Your company has client computers that run Windows XP Professional.

You are planning to install Windows 7 Enterprise on the existing client computers.

You have the following requirements:

- ✍ Migrate user data and operating system components.
- ✍ Encrypt and password-protect the migration store.

You need to design a user state migration strategy that supports the requirements.

What should you do?

- A. Use a hard-link migration store.
- B. Perform an offline migration by using Windows.old.
- C. Use a compressed migration store.
- D. Perform an offline migration by using Windows PE.

Answer: C

Explanation:

Compressed migration

The compressed migration store is a single image file that contains all files being migrated and a catalog file.

This image file is often encrypted and protected with a password, and cannot be navigated with Windows Explorer.

[http://technet.microsoft.com/en-us/library/dd560795\(v=ws.10\).aspx](http://technet.microsoft.com/en-us/library/dd560795(v=ws.10).aspx)

Question No : 5 - (Topic 1)

Your company has a single Active Directory Domain Services (AD DS) domain and 1,000 client computers.

You are planning to deploy Windows 7 Enterprise to the client computers.

You need to design a zero-touch installation strategy.

What should you use in your design?

- A. custom Windows 7 image on DVD
- B. unattended installation
- C. Windows Deployment Services (WDS)
- D. Microsoft System Center Configuration Manager 2007 R2

Answer: D

Explanation:

Microsoft Deployment Toolkit (MDT) 2010 is a Microsoft solution accelerator available at no cost for deploying Windows operating systems. Based on the experience of Microsoft employees, partners, and customers, MDT 2010 contains many thousands of lines of code—code that provides a deployment framework so that customers can focus on their business, not on programming. Integrating MDT 2010 with Configuration Manager 2007 R2 helps large organizations use this framework to more easily implement the Zero-Touch, High-Volume Deployment strategy.

Benefits of integrating MDT 2010 with Configuration Manager 2007 R2 in the Zero-Touch, High-Volume

Deployment strategy include:




- Streamlined deployment, because installation is fully automated without interaction.
- Lower support costs, because configurations are consistent across all client computers.
- Streamlined maintenance, because Configuration Manager 2007 R2 handles applications, device drivers, and updates.

[http://technet.microsoft.com/en-us/library/dd919178\(v=ws.10\).aspx](http://technet.microsoft.com/en-us/library/dd919178(v=ws.10).aspx)

Question No : 6 - (Topic 1)

You are planning a zero-touch deployment of Windows 7 Enterprise to client computers on your corporate network.

Each client computer has three available boot methods:

-  boot from the network by using PXE
-  boot from USB media
-  boot from the local hard disk

You have the following requirements:

- ✍ Set the boot method for a zero-touch deployment.
- ✍ Ensure that client computers that fail on deployment can be manually configured.

You need to design a zero-touch deployment strategy that supports the requirements.

What should you do?

- A. Remove USB media and local hard disk from the available boot methods
- B. Remove USB media and network from the available boot methods
- C. Set network as the first boot method, USB media as the second boot method, and local hard disk as the third boot method
- D. Set USB media as the first boot method and local hard disk as the second boot method. Remove network from the available boot methods

Answer: C

Explanation:

hints: zero-touch deployment of Windows 7 Enterprise to client computers on your corporate network so, set network as 1st boot.

Question No : 7 DRAG DROP - (Topic 1)

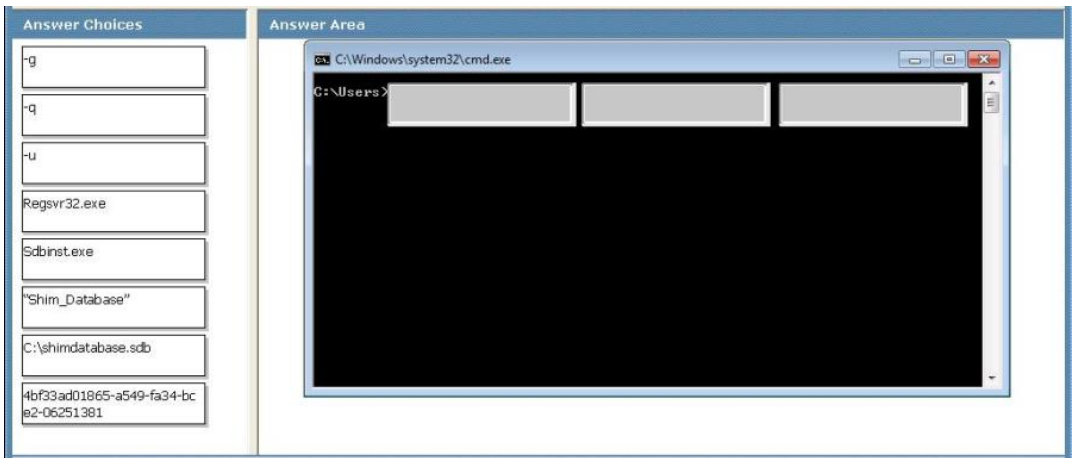
You create a shim database and distribute it to each of a company's client computers through a script. You name the database Shim_Database and give it a filename of shimdatabase.sdb. The database GUID is 18315260-2ecb-43af-945a-56810da33fb4.

The database must be registered on all client computers. The registration process must be invisible to the user.

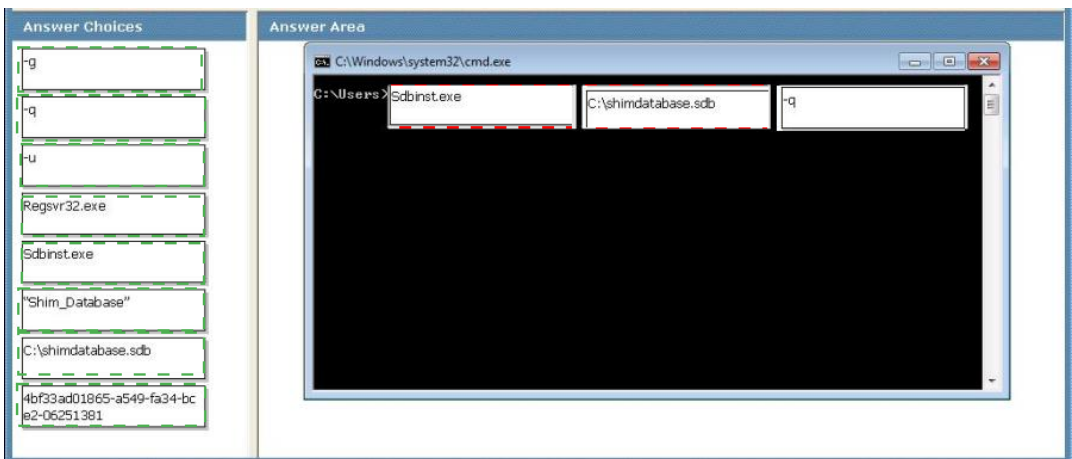
You need to construct a command to register the shim database.

Which command should you use? To answer, drag the appropriate component from the list of command components to the correct location or locations in the work area.

Microsoft 70-686 : Practice Test



Answer:



Question No : 8 DRAG DROP - (Topic 1)

A company has 1,000 computers in the main office and 20 computers in store kiosks. All the computers run Windows 7 Enterprise. The kiosk computers do not have network connections.

The company brands the Microsoft Internet Explorer program window on all computers by displaying the company logo at the left end of the title bar. The company changes its logo.

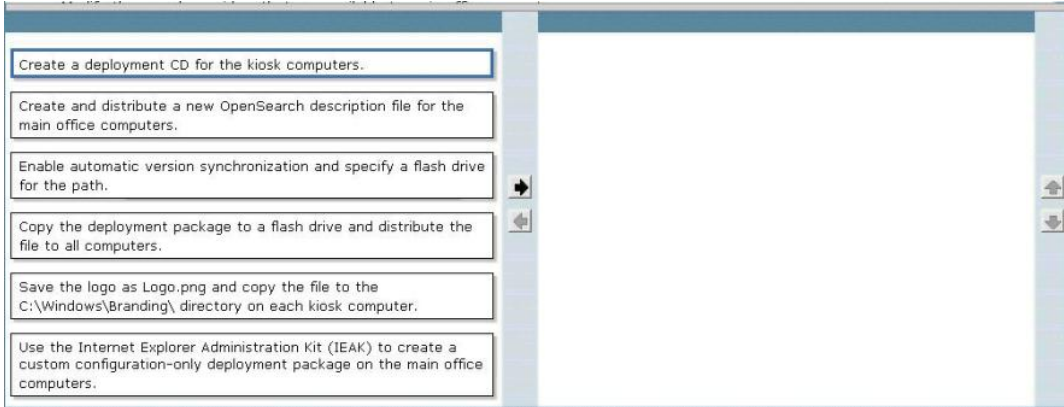
You have the following requirements:

- Display the new logo on the Internet Explorer program window title bar on the main office computers and the kiosk computers.
- Modify the search providers that are available to main office computers.

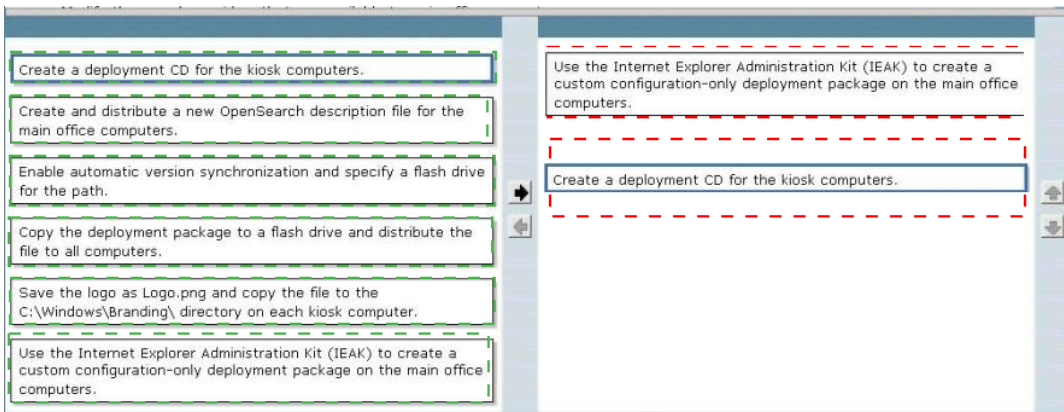
Microsoft 70-686 : Practice Test

You need to define Internet Explorer settings to support the requirements.

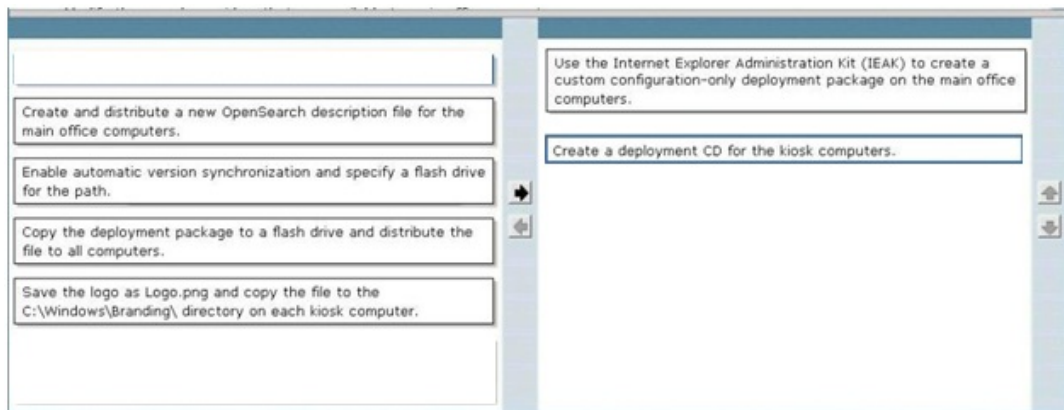
Which two actions should you perform in sequence? (To answer, move the appropriate actions from the list of actions to the answer area and arrange them in the correct order.)

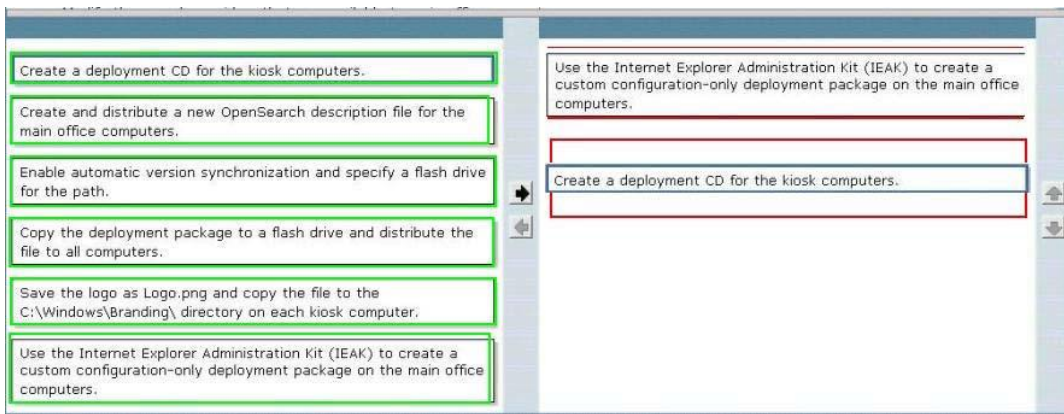


Answer:



Explanation:





untitled

Hints:

Kiosk computer do not have network connections, deployment CD is needed.

Question No : 9 - (Topic 1)

You are designing a Windows 7 deployment image.

You plan to install Windows 7 Enterprise with a Multiple Activation Key (MAK).

You need to add the MAK to the configuration pass by using an answer file.

To which configuration pass should you add the MAK?

- A. the WindowsPE configuration pass
- B. the Generalize configuration pass
- C. the AuditSystem configuration pass
- D. the Specialize configuration pass

Answer: D

Explanation:

As a single key is used, you can add MAK keys images when deploying them centrally.

When using the Sysprep utility to prepare an image, you add a MAK key to an image

during the Specialize configuration pass. When performing a traditional installation, you can enter

MAK keys in the same way that you would enter a retail key. The main issue that requires

consideration when using a MAK key is how you will perform activation.

http://blogs.msdn.com/b/microsoft_press/archive/2010/10/27/new-book-mcstp-self-paced-training-kit-exam-70-686-windows-174-7-enterprise-desktop-administrator.aspx

Topic 2, Scenario A

Background

You are the desktop architect for a company with 14,000 client computers. Some client computers are portable computers and some are desktop computers. All client computers currently run Windows XP. You are in the evaluation phase for upgrading to Windows 7. Approximately half of the Carlsbad and Madrid offices are used by sales employees. Sales employees report to the office only once per quarter. Your company has users in offices as shown in the following table.

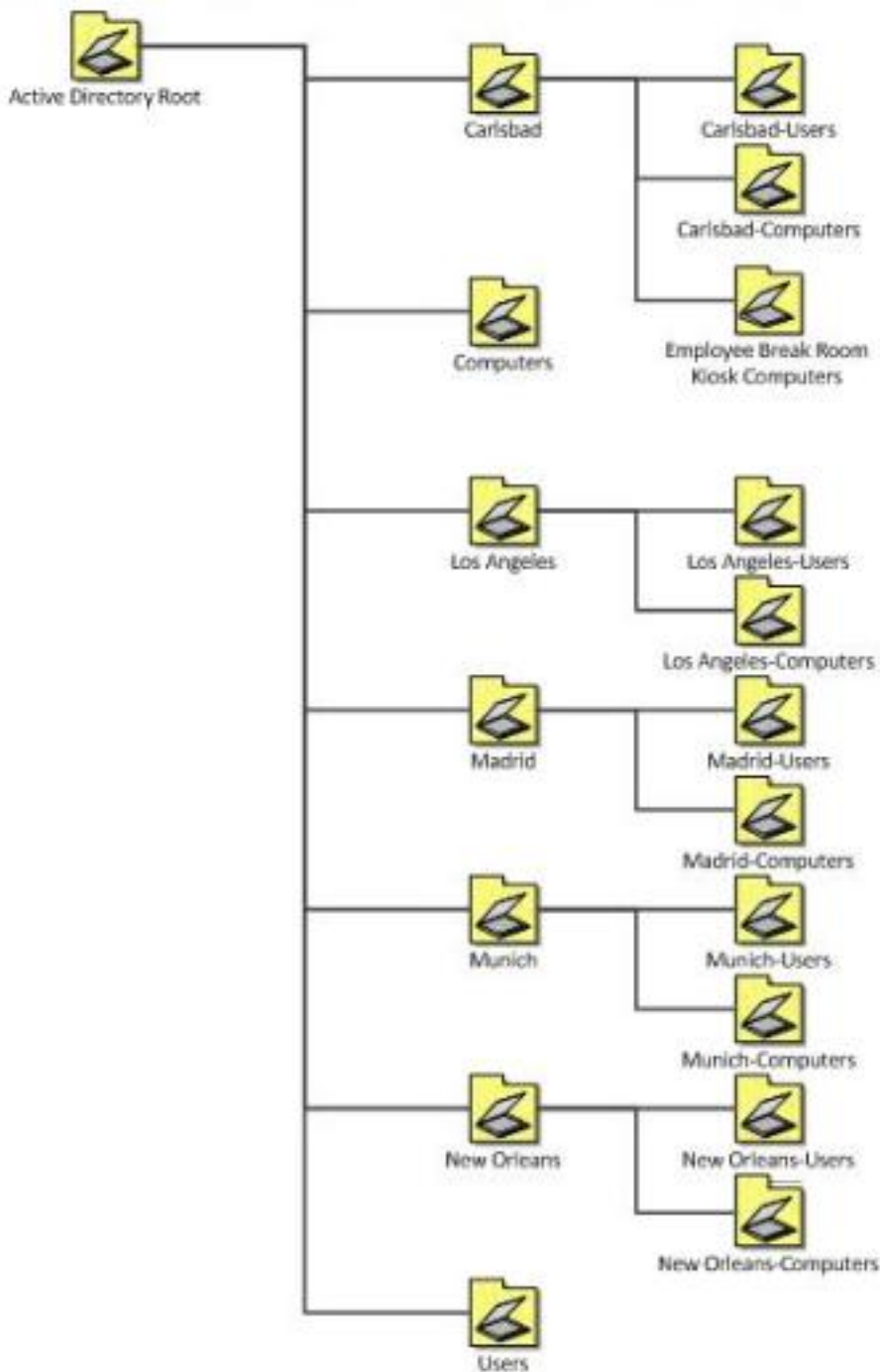
Location	Number of users	Number of desktop technicians
Madrid	1,000	4
Carlsbad	3,000	12
Los Angeles	4,000	14
Munich	5,000	16
New Orleans	1,000	4

The address for the SharePoint site is <https://intranet.company.com>.

Each location has gigabit network connections to the desktop except Madrid, which has 100 megabit connections. Each office has a Dynamic Host Configuration Protocol (DHCP) server and uses multiple VLANs.

You use Group Policy objects (GPOs) to manage various settings. The following figure displays the Organizational Unit (OU) layout for the Active Directory Domain Services (AD DS) domain.

Microsoft 70-686 : Practice Test



Each office has two connections, a data center WAN link and an Internet connection. Each office connects to a central data center facility with connection speeds as shown in the following table.

Location	Data center WAN link	Internet link
Madrid	10 Mbps	5 Mbps
Carlsbad	10 Mbps	5 Mbps
Los Angeles	20 Mbps	20 Mbps
Munich	10 Mbps	10 Mbps
New Orleans	10 Mbps	5 Mbps

You currently use one of each client computer model to create and maintain a disk image for each model. The models supported by your company are listed in the following table.

Model description	Client type	Processor type	Memory	Hard disk	Location
Model A	Laptop	Single core 1Ghz	1 GB	40 GB	New Orleans-Computers OU
Model B	Laptop	Dual core 1.4Ghz	2 GB	60 GB	New Orleans -Computers OU
Model C	Desktop	Dual core 1.6Ghz	2 GB	60 GB	Carlsbad-Computers OU
Model D	Desktop	Dual core 2.0Ghz	4 GB	80 GB	Los Angeles-Computers OU
Model E	Desktop	Dual core 1.2Ghz	1 GB	100 GB	Madrid-Computers OU

You currently use a third-party disk imaging application to capture and deploy new Windows XP computers. Desktop administrators use optical media to deploy the image to new or repurposed client computers. The current Windows XP image is about 11 GB in size, which includes 2 GB of applications and 9 GB of Windows XP files.

Business Requirements

The deployment of Windows 7 must meet the following business requirements:

Deployment requirements:

The deployment must maximize the use of existing client computers. The deployment must reduce the amount of time spent updating client computers after deployment.

Technical Requirements

The application must meet the following technical requirements:

Infrastructure requirements:

The amount of disk space required to store deployment images must be reduced. The number of images that need to be copied across WAN links must be reduced. You are based in the Los Angeles office and use the Microsoft Deployment Toolkit. You have a file server hosting a deployment share in Los Angeles.

Application compatibility:

- All current applications must be supported on Windows 7.
- All offices are moving to a new finance application in the next six months. The new finance application installs and runs correctly on Windows 7.

Migration requirements:

- The deployment cannot require users to store their files on a network or external drive for the migration. Only system administrators can be allowed to install applications. User data must be migrated during upgrades to Windows 7. There is a small budget for hardware upgrades when required.

Image maintenance:

- You need to minimize the re-arm passes.

Security

- Each location has a security group made up of the desktop computer objects in that location.
- Users must not be able to change their web browser or client computer security settings.
- Your requirements are as follows:
 - ✍ A startup PIN and TPM are required for all BitLocker users.
 - ✍ Local regulations prohibit the use of BitLocker for all computers in the Munich office. This supersedes any other requirement.
 - ✍ All laptops within the company must have BitLocker enabled.
 - ✍ All Madrid desktops must have BitLocker enabled.
 - ✍ No other desktops besides Madrid should have Bitlocker enabled.
- Computers in office lobbies are not permitted to join the domain.
- You need to block the use of ActiveX controls for all external websites.

Question No : 10 - (Topic 2)

You have deployed a ConfigMgr site server at each site. You are planning to use PXE boot to deploy a new Windows 7 image. You need to deploy the image to all office locations. When you attempt to perform a PXE boot, it fails at each office location.

You need to prepare the infrastructure.

What should you do? (Choose all that apply.)

- A.** On each VLAN or subnet, create an IP helper for PXE that points to the PXE service point in each office.
- B.** Install a single PXE service point in the Los Angeles office.
- C.** On each VLAN or subnet, create an IP helper for PXE that points to the PXE service point in the Los Angeles office.
- D.** Install a PXE service point in each office.
- E.** Create a single IP helper for PXE that points to the DHCP server in the Los Angeles office.
- F.** Create a single IP helper for PXE that points to the DHCP server in each office.

Answer: C,D

Explanation:

This dump's question is not complete.

MS exam question mention Deployment share is only setup at los Angeles office.

[Microsoft 70-686 : Practice Test](#)

one of question from testlets

Thank You For Trying 70-686 PDF Demo

To try our 70-686 Premium Files visit link below:

<https://examsland.com/latest-exam-questions/70-686/>

Start Your 70-686 Preparation

Use Coupon **EL25 for extra 25% discount on the purchase of Practice Test Software.**