

Microsoft

Exam 70-685

70-685

Verson: Demo

[Total Questions: 10]

Topic break down

Topic	No. of Questions
Topic 6: Fabrikam, Inc	1
Topic 8: Fourth Coffee	1
Topic 11: Baldwin Museum of Science	1
Topic 12: Tailspin Toys	2
Topic 13: Enterprise Company	1
Topic 14: Mixed Questions	4

Topic 6, Fabrikam, Inc

Scenario:

You are an enterprise desktop support technician for Fabrikam, Inc.

Active Directory Information

The company has a main office and a branch office. The main office hosts all of the company's servers. The main office connects to the branch office by using a WAN link.

The network contains a single Active Directory domain that has 500 users. The domain contains three domain controllers and an enterprise root certification authority (CA).

All servers run Windows Server 2008 R2.

All user accounts are in an organizational unit (OU) named Employees. The computer accounts for all desktop computers are in an OU named Desktops. The computer accounts for all portable computers are in an OU named Laptops.

A startup script is deployed to all computers by using Group Policy objects (GPOs).

Client Configurations

All client computers run Windows 7 Enterprise. All users have desktop computers. All computers are members of the domain.

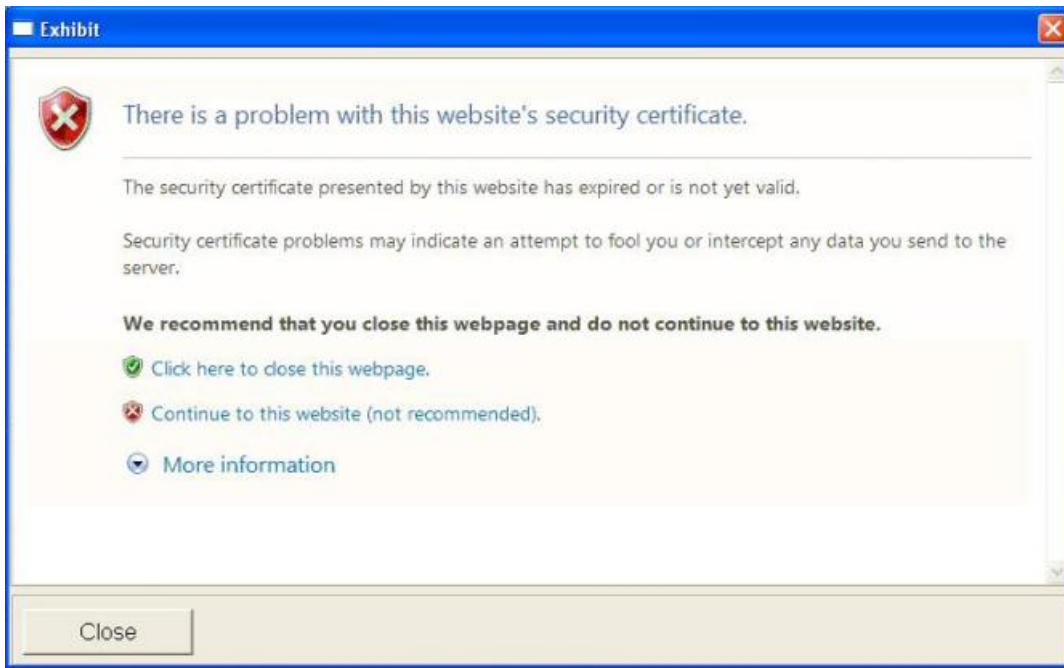
All desktop computers use wired connections to connect to the network. All portable computers use wireless connections to connect to the network. The wireless network is secured by using EAP-TLS.

Company policy states that all client computers must be configured by using DHCP.

The company has an internal Web site. The Web site is configured to use SSL encryption and to require client certificates. All company users can access the internal Web site.

Question No : 1 - (Topic 6)

The help desk reports that users receive a security warning message when they try to access the internal Web site shown in the exhibit. (Click the Exhibit button.)



The help desk confirms that users never received this security warning message before.

You need to provide a solution to prevent users from receiving the security warning when they try to access the internal Web site.

What should you do?

- A. Instruct the users to download the certificate of the Web server.
- B. Instruct the users to download a new certificate revocation list (CRL).
- C. Request that a domain administrator renew the Web server SSL certificate.
- D. Request that a domain administrator renew the user authentication certificates for all users.

Answer: C

Topic 8, Fourth Coffee

Scenario:

You are an enterprise desktop support technician for Fourth Coffee. The network contains a single domain named fourthcoffee.com.

Physical Environment

The company has three offices. The offices are configured as shown in the following table.

Office	Organizational unit (OU)	Active Directory site name
Main office	MainOffice	Main Office Site
Branch office 1	BranchOffice1	Branch 1 Site
Branch office 2	BranchOffice2	Branch 2 Site

The relevant servers are configured as shown in the following table.

Server Name	Role	Office
DC1	Domain controller, DNS server	Main office
DC2	Domain controller, DNS server	Branch office 1
SVR1	Member server, DNS server, file server, DHCP server	Branch office 2
DHCP1	DHCP server	Main office
VPN1	VPN server	Main office
Web1	Web server	Main office
AppServer1	Application server	Main office

The Web1 server is accessible only through the URL <http://web1.fourthcoffee.local>.

Application Configurations

Fourth Coffee deploys an application named App1 to users in the main office by using a Group Policy object (GPO) named APP1Deploy. App1 requires that a drive named M be mapped to

\\AppServer1\AppData\$. App1 saves information on a local computer if drive M is unavailable. All client computers have drive M.

Security Policy

The corporate security policy states that domain controllers can only be deployed in secure data centers. Branch office 2 does not have a secure data center.

Client Configuration

All users connect remotely through VPN1. VPN1 is configured to accept only SSTP-based VPN connections.

All client computers receive IP configurations from DHCP.

You recently purchased 100 desktop computers from a new hardware vendor.

The help desk reports that the new computers experience intermittent failures that generate stop errors.

You need to collect all the critical errors from the new computers.

What should you configure?

- A. a boot configuration data (BCD) store
- B. debugging information
- C. event subscriptions
- D. the system protection settings

Answer: C

Topic 11, Baldwin Museum of Science

Scenario:

You are an enterprise desktop support technician for the Baldwin Museum of Science. The Baldwin Museum of Science is located in Dublin. The museum has 2,000 employees. All employees have laptop computers that have cellular connections. The museum has a main office and three satellite offices.

Active Directory Configuration

The network contains an Active Directory forest. The forest contains a domain named Baldwinmuseumofscience.com.

The relevant group policy information is shown in the following table.

Group Policy name	Linked to	Security filtering
DirectAccess Policy- {3491980e...}	Baldwinmuseumofscience.com domain	Baldwin\Direct Access
WSUS Policy	Baldwinmuseumofscience.com domain	Authenticated Users

Server Configuration

All servers are located in the main office and run Windows Server 2008 R2. The relevant servers are configured as shown in the following table.

Server name	Server role(s)	IP address
DC1	Global catalog, DNS, DHCP	192.168.0.11
CA1	Enterprise root certification authority (CA)	192.168.0.21
EX1	Microsoft Exchange Server 2010 server	192.168.0.51
Intranet	Microsoft Office SharePoint Server	192.168.0.71
WSUS	Windows Server Updates Services (WSUS) 3.0	192.168.0.81
FP1	File and print services	192.168.0.91

Users access the network remotely by using a DirectAccess connection.

Client Computer Information

All client computers run Windows 7 Enterprise (x86). The client computers are configured to receive Windows Updates from <http://WSUS>.

Application Configuration

All users run Microsoft Office Outlook 2010 and use Outlook Anywhere. Users access the intranet Web site by using the URL <http://intranet>.

The museum hosts several Web sites that use the domain suffix fineartschool.net.

Corporate Security Policy

The corporate security policy states that all updates on client computers must be installed from the internal WSUS server.

Question No : 3 - (Topic 11)

Users report that they can only access the fineartschool.net Web servers by entering the full URL to the servers.

You need to recommend a solution that allows users to access the Web servers by using single label names. Your solution must ensure that users can access the intranet Web server by using the URL

<http://intranet>.

What should you recommend?

- A. the DHCP server option for the DNS domain name be removed
- B. fineartschool.net be added as the primary DNS suffix in the Default Domain Policy
- C. fineartschool.net be added to the DNS Search Suffix list in the Default Domain Policy
- D. the Allow DNS Suffix Appending to unqualified Multi-Label Name Queries setting be enabled in the Default Domain Policy

Answer: C

Topic 12, Tailspin Toys

Scenario:

Background

You are the desktop support technician for Tailspin Toys. Tailspin Toys manufacturers and distributes children's toys. The network environment includes a server infrastructure running on Windows Server 2003 Service Pack (SP) 2 and Windows Server 2008 R2, Active Directory with the forest and domain levels set at Windows Server 2003, and Active Directory Certificate Services (AD CS) running on Windows Server 2008 R2. The company has a Microsoft Enterprise Agreement (EA) with Software Assurance (SA).

The company sites, network connectivity, and site technologies are shown in the following table.

Site name	Number of users	Connection speed	Notes
Headquarters	1,750	100Mbit	Has data center
Manufacturing	1,000	45Mbit	
Sales	250	T1	Mostly mobile employees

The company's domain controller layout and details are shown in the following table.

Site name	Name of DCs	Operating system version
Headquarters	DC01, DC02	Windows Server 2008 R2
Manufacturing	DC03, DC04	Windows Server 2003 SP1
Sales	DC05, DC06	Windows Server 2003 SP2

The company's client computer configuration details are shown in the following table.

Microsoft 70-685 : Practice Test

Site name	Operating system type	TPM	Notes
Headquarters	Windows 7 Enterprise 32-bit and 64-bit	TPM 1.2	Trusted Computing Group (TCG)-compliant BIOS
Manufacturing	Windows XP Professional 32-bit SP 3	No TPM	BIOS is not TCG compliant. Some users use Encrypting File System (EFS). Users do not have administrative permissions.
Sales	Windows Vista Enterprise 32-bit	No TPM	Can read from USB hard drive during startup, TCG-compliant BIOS

The company uses Microsoft SharePoint 2010 as the company intranet and as a document repository for company-related Microsoft Office documents. The URL for the intranet is intranet.tailspintoys.com. There is a Group Policy object (GPO) that applies to all client computers that allows employees who are connected to the corporate network to go to the intranet site without having to enter authentication information.

All users are using Microsoft Internet Explorer 8. All users have enabled the Internet Explorer SmartScreen Filter and the Internet Explorer phishing filter. All of the desktop support technicians are members of a security group named Desktop Admins. The Desktop Admins group is a member of the local Administrators group on all client computers. The desktop support technicians use the Microsoft Diagnostics and Recovery Toolset to perform various troubleshooting and repairs.

All Windows 7 client computers have a directory named tailspintoys\scripts in the root of the operating system drive. The directory contains four unique .vbs files named script1.vbs, script2.vbs, script3.vbs, and script4.vbs.

Software Environment

- ✍ An existing GPO named AppLockdown applies to Windows 7 machines and uses AppLocker to ensure that:No .bat files are allowed to be run by users and rules are enforced
- ✍ An existing GPO named RestrictApps applies to Windows XP client computers and uses a Software Restriction Policy to ensure that:No .bat files are allowed to be run by users and rules are enforced

Data Protection Environment

- ✍ Some users at the Manufacturing site use EFS to encrypt data.
- ✍ A user account named EFSAdmin has been designated as the Data Recovery Agent (DRA).
- ✍ The DRA certificate and private key are stored on a portable USB hard drive.

As part of the yearly security compliance audits, a vendor is due to arrive at Tailspin Toys in a month to perform the yearly audit. To prepare for the audit, management has asked you to participate in an internal review of the company's existing security configurations related to network security and data security. The management team has issued the following requirements:

New software requirements

- ✍ All installation programs must be digitally signed.
- ✍ Minimum permissions must be granted for installation of programs.

Internet Explorer requirements

- ✍ Users must not be able to bypass certificate warnings.
- ✍ Users must not be able to add Internet Explorer add-ons unless the add-ons are approved by IT.

Data protection requirements

- ✍ All portable storage devices must use a data encryption technology. The solution must meet the following requirements: Allow all users a minimum of read access to the encrypted data while working from their company client computers. Encrypt entire contents of portable storage devices. Minimize administrative overhead for users as files and folders are added to the portable storage devices.
- ✍ Recovery information for client computer hard drives must be centrally stored and protected with data encryption.

Question No : 4 - (Topic 12)

You need to identify which of the company's client computers are candidates to use BitLocker on the operating system hard disk.

Which client computers should you recommend? (Choose all that apply.)

- A. all client computers at the Sales site
- B. all client computers in the Headquarters site
- C. all client computers in the Manufacturing site
- D. all client computers that are not TCG compliant

Answer: B

Explanation:

Answer changed from C. to B.

Chapter 4 Lesson 3 p 175

BitLocker Drive Encryption is a data protection feature available in Windows 7 Enterprise and Windows 7 Ultimate for client computers and in Windows Server 2008 R2.

[http://technet.microsoft.com/en-us/library/ee449438\(v=ws.10\).aspx](http://technet.microsoft.com/en-us/library/ee449438(v=ws.10).aspx)

Question No : 5 - (Topic 12)

A new client computer was joined recently to the company domain. However, it does not have the latest Windows updates installed.

You need to ensure that the client computer uses the company's enterprise update distribution servers to install the latest Windows updates immediately.

What should you do?

- A. Start the Windows Installer service.
- B. Run the wuauclt.exe /resetauthorization command.
- C. Run the wuauclt.exe /detectnow command.
- D. Run the net start TrustedInstaller command.

Answer: C

Explanation:

[http://technet.microsoft.com/en-us/library/cc708617\(WS.10\).aspx](http://technet.microsoft.com/en-us/library/cc708617(WS.10).aspx)

Topic 13, Enterprise Company

Scenario:

Background

You are the desktop support technician for an enterprise company. The company offices, sizes, and platforms are shown in the following table.

Location	Number of users	Operating system version
Caracas	2,500	Windows 7
Athens	150	Windows Vista
Beijing	1,500	Windows 7
Chicago	400	Windows XP

The Beijing office has been experiencing remote access issues.

The company's client computers run Windows Vista and Windows 7. The company is in the process of upgrading the Windows Vista client computers to Windows 7. All client computers have two volumes, as shown in the following table.

Volume	Usage	Hard disk
C	System volume	0
D	Data volume	1

The company's password policy is shown in the following table.

Policy	Setting
Enforce password history	5 passwords
Maximum password age	30 days
Minimum password age	0 days
Minimum password length	8 characters
Password must meet complexity requirements	Disabled
Store passwords using reversible encryption	Disabled

The company's account lockout policy is shown in the following table.

Policy	Setting
Account lockout duration	0 minutes
Account lockout threshold	10 count
Reset account lockout counter after	15 minutes

Software Environment

- ✍ The company has a single Active Directory Domain Services (AD DS) forest with one domain. All domain controllers run Windows Server 2008 R2. The forest and domain functional levels are set to Windows Server 2008 R2.
- ✍ The company outsources sales support to a third party.
- ✍ Each member of the Sales Support team has an AD DS user account in a global security group named Sales.
- ✍ The Sales security group and the AD DS user accounts for the Sales Support team reside in an organizational unit (OU) named Sales Support.
- ✍ Members of the Sales Support team do not use domain-joined client computers.
- ✍ With the exception of the Sales Support team, all user accounts reside in an OU named Employees.
- ✍ All client computers reside in an OU named Client Computers.
- ✍ A global security group named Accounting contains users with domain accounts. They use portable computers running Windows 7 that are joined to the domain.
- ✍ The company uses DirectAccess for remote access connectivity. Windows 7 domain-joined computers have been configured to use DirectAccess.
- ✍ The company uses Microsoft Exchange and Outlook Web App (OWA) for email and collaboration. The company has enabled password reset through OWA.

The company uses AppLocker to prevent users from running certain programs. AppLocker rules are defined at the domain-level in the Corp Group Policy object (GPO). Corp GPO only contains AppLocker policy settings.

Wireless Requirements

The company has wireless access points (WAPs) that provide wireless connectivity at some locations. The company uses a GPO named WiFi to enforce wireless security. The WiFi GPO is linked to the domain.

The company mandates that all domain-joined computers must connect to corporate WAPs automatically. The company's 802.1 X authentication server must be used for client computer connections to the WAP.

Visitors and contractors are unable to connect to the corporate wireless network. Management has mandated that a guest wireless network be established that meets the following criteria:

- ✍ Users should not have to provide credentials.
- ✍ Maximize wireless network performance.
- ✍ Minimize administrative overhead.

Data Protection Environment

- ✍ Full system backups are performed on client computers on Sundays with one week of retention.
- ✍ All client computers are configured with System Protection settings to restore only previous versions of files.

Question No : 6 - (Topic 13)

You deploy a WAP in the company's Beijing office. Client computers connect to it by using the WiFi GPO. You deploy an 802.1X authentication server that is used to authenticate wireless connections.

You need to ensure that the wireless authentication meets the company's requirements.

Which security option should you configure the wireless connections to use?

- A. WPA-Enterprise
- B. WEP
- C. WPA2-Personal
- D. No authentication (Open)

Answer: A

Explanation:

Chapter 2 Lesson 3 p 86 – 90

http://www.youtube.com/watch?v=g-0MM_tK-Tk

Topic 14, Mixed Questions

Question No : 7 - (Topic 14)

All client computers on your company network run Windows 7 and are members of an Active Directory Domain Services domain.

All portable computers connect only to the 802.1X-authenticated wireless network. Wireless settings are set through the domain's Group Policy. You discover that new portable computers cannot be joined to the domain.

You need to ensure that new portable computers can be joined to the domain.

What should you do?

- A. Connect the portable computers to the wireless network by using a Bootstrap Profile.
- B. Connect the portable computers to the wireless network by using a Non-Broadcast Profile.
- C. Connect the portable computers to the domain by using smart card authentication.
- D. Connect the portable computers to the domain by using network security key authentication.

Answer: A

Question No : 8 - (Topic 14)

All client computers on your company network run Windows XP and are members of an Active Directory Domain Services domain.

You plan to migrate all computers to Windows 7. You also plan to deploy a new VPN server to support remote network access for the computers.

You need to ensure that all computers will be supported for remote access during the migration to Windows

What should you do?

- A. Set the VPN server to Layer 2 Tunneling Protocol.
- B. Set the VPN server to Secure Socket Tunneling Protocol.
- C. Set the VPN server to Internet Key Exchange version 2.
- D. Configure the Direct Access feature on the VPN server.

Answer: A

Question No : 9 - (Topic 14)

A company has computers running Windows 7 Enterprise. The company also has one file server and two domain name servers running Windows Server 2008 R2.

All computers except for one user's computer can correctly resolve the IP address of the file server from its host name. The user's computer is resolving the file server's host name to an incorrect IP address. The user's computer can access the Internet but cannot access the file server.

You need to recommend actions that can be performed on the user's computer to resolve the host name of the file server.

What should you recommend? (Choose all that apply.)

- A. Run the ipconfig /flushdns command.
- B. Run the hostname command.
- C. Run the ipconfig /release and ipconfig /renew commands.
- D. Remove the file server's entry in the HOSTS file.
- E. Run the ipconfig /registerdns command.

Answer: B,E

Question No : 10 HOTSPOT - (Topic 14)

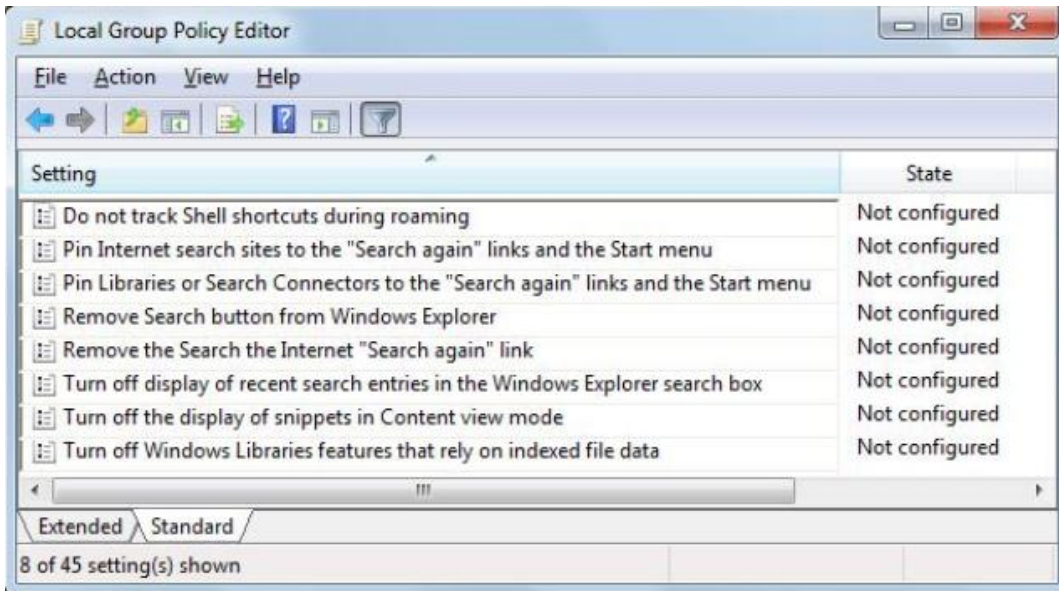
All client computers on a company's network run Windows 7.

The preview displayed in the Content view of Windows Explorer and the Searchbox is considered a security risk by the company.

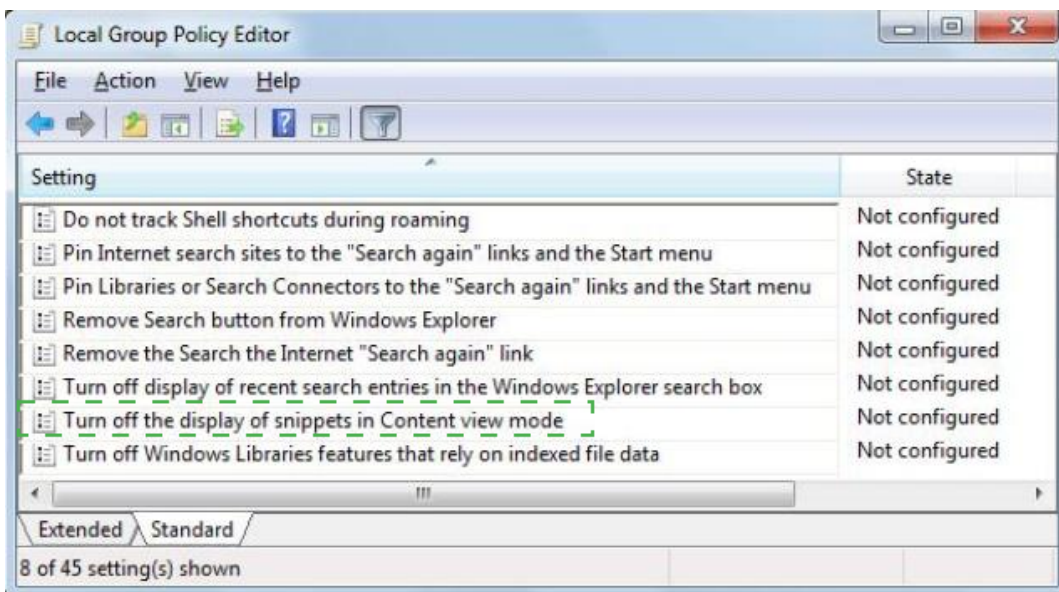
You need to ensure that documents cannot be previewed in the Content view.

Microsoft 70-685 : Practice Test

Which setting should you select in the Local Group Policy Editor? To answer, select the appropriate group policy in the work area.

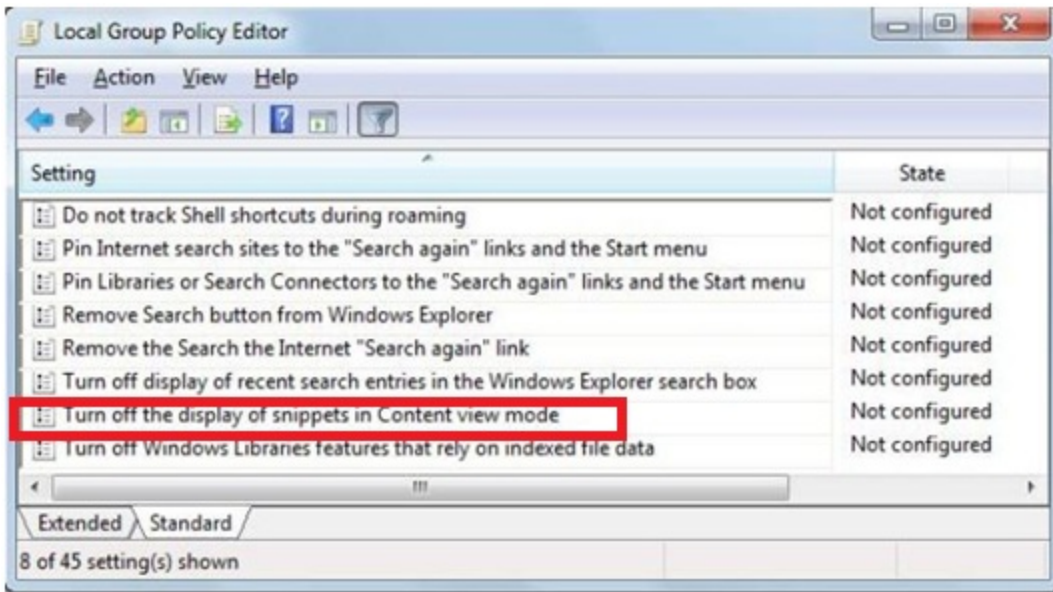


Answer:



Explanation:

Microsoft 70-685 : Practice Test



C:\Users\Kamran\Desktop\image.JPG

Thank You For Trying 70-685 PDF Demo

To try our 70-685 Premium Files visit link below:

<https://examsland.com/latest-exam-questions/70-685/>

Start Your 70-685 Preparation

Use Coupon **EL25 for extra 25% discount on the purchase of Practice Test Software.**