

Microsoft

70-487 Exam

Microsoft Developing Windows Azure and Web Services Exam

Questions & Answers Demo

Version: 12.0

Question: 1

DRAG DROP

You need to configure the Windows Azure service definition to enable Consolidated Messenger to upload files.

What should you do? (To answer, drag the appropriate configuration items to the correct location or locations. Each configuration item may be used once, more than once, or not at all. You may need to drag the split bar between panes or scroll to view content.)

```
<Binding name="Website" endpointName="Website" />
<Binding name="Transfer" endpointName="Transfer" />
</Bindings>
</Site>
</Sites>
<Endpoints>
< [ ] name="Website"
    protocol=" [ ] "
    port=" [ ] " />
< [ ] name="Transfer"
    protocol=" [ ] "
    port=" [ ] " />
</Endpoints>
</WebRole>
```

Answer:

```
<Binding name="Website" endpointName="Website" />
<Binding name="Transfer" endpointName="Transfer" />
</Bindings>
</Site>
</Sites>
<Endpoints>
  < InputEndpoint name="Website"
    protocol=" http "
    port=" 80 " />
  < InputEndpoint name="Transfer"
    protocol=" tcp "
    port=" 22 " />
</Endpoints>
</WebRole>
```

Question: 2

HOTSPOT

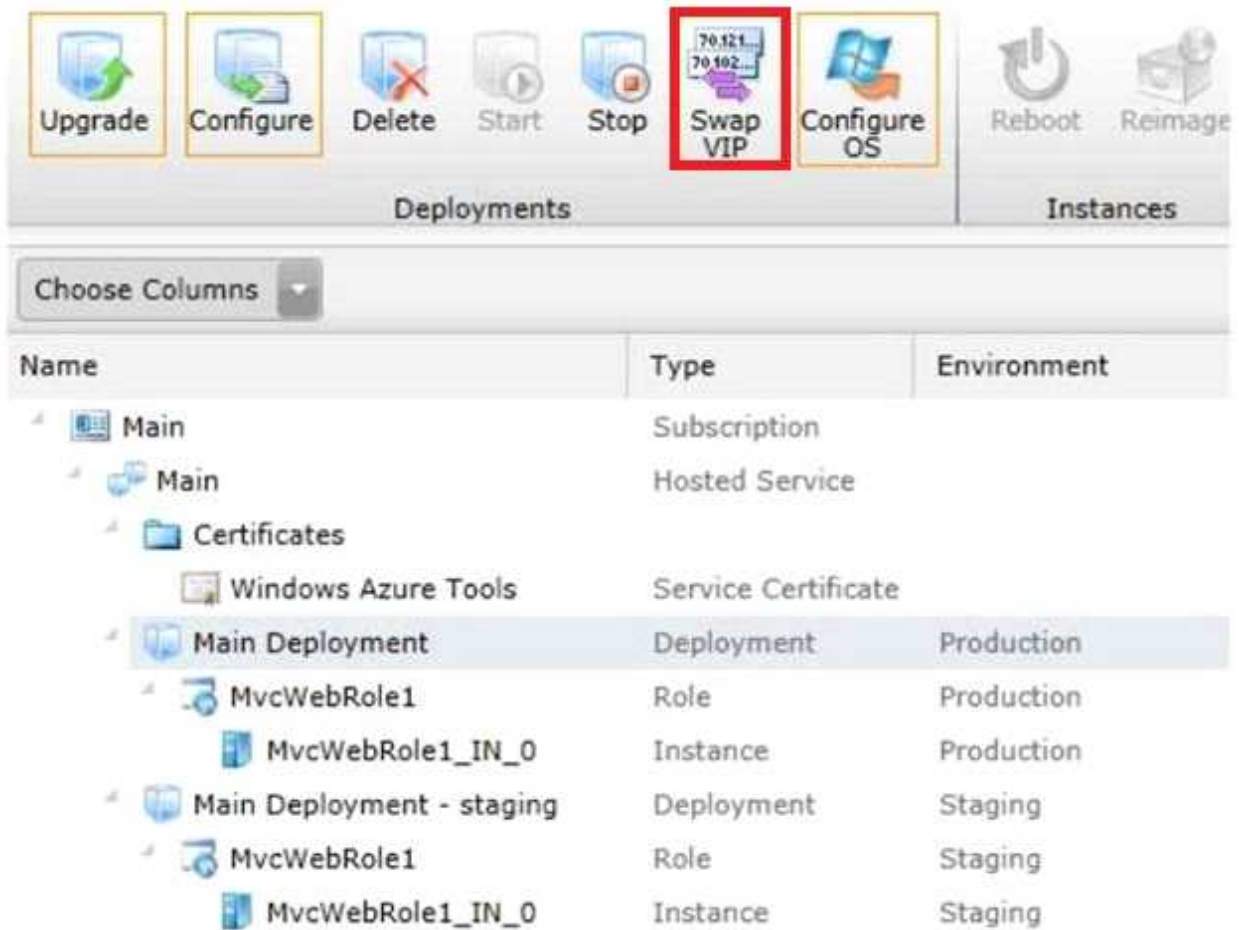
You need to deploy the application to the Windows Azure production environment to meet the business requirements.

What should you do? (To answer, select the appropriate button in the answer area.)

The screenshot shows the Azure Management Console interface. At the top, there are two groups of icons: 'Deployments' and 'Instances'. The 'Deployments' group includes Upgrade, Configure, Delete, Start, Stop, Swap VIP, and Configure OS. The 'Instances' group includes Reboot and Reimage. Below the icons is a 'Choose Columns' dropdown menu. The main area displays a table with three columns: Name, Type, and Environment. The table content is as follows:

Name	Type	Environment
Main	Subscription	
Main	Hosted Service	
Certificates		
Windows Azure Tools	Service Certificate	
Main Deployment	Deployment	Production
MvcWebRole1	Role	Production
MvcWebRole1_IN_0	Instance	Production
Main Deployment - staging	Deployment	Staging
MvcWebRole1	Role	Staging
MvcWebRole1_IN_0	Instance	Staging

Answer:



Question: 3

You need to recommend a data access technology to the contractor to retrieve data from the new data source.

Which data access technology should you recommend?

- A. LINQ to XML
- B. ADO.NET Entity Framework
- C. ADO.NET DataSets
- D. WCF Data Services

Answer: D

Question: 4

DRAG DROP

Flight information data provided by Margie's Travel is updated both locally and remotely. When the data

is synced, all changes need to be merged together without causing any data loss or corruption.

You need to implement the Sync() method in the MargiesTravelSync.es file.

What should you do? (To answer, drag the appropriate code segments to the correct location or locations in the answer area)

a. Each code segment may be used once, more than once, or not at all. You may need to drag the split bar between panes or scroll to view content.)

Answer Area

```
public void Sync()
{
    var sendStream = SendStream();
    var receiveStream = ReceiveStream();
    var local = LoadLocal();

    local.WriteXml(sendStream, );

    local.ReadXml(receiveStream, );
}
```

Answer:

```
public void Sync()
{
    var sendStream = SendStream();
    var receiveStream = ReceiveStream();
    var local = LoadLocal();

    local.WriteXml(sendStream, );

    local.ReadXml(receiveStream, );
}
```

<http://msdn.microsoft.com/en-us/library/ms135424.aspx>

Question: 5

DRAG DROP

Historical flight information data will be stored in Windows Azure Table Storage using the FlightInfo class as the table entity.

There are millions of entries in the table. Queries for historical flight information specify a set of airlines to search and whether the query should return only late flights. Results should be ordered by flight name.

You need to specify which properties of the FlightInfo class should be used at the partition and row keys to ensure that query results are returned as quickly as possible.

What should you do? (To answer, drag the appropriate properties to the correct location or locations in the answer area)

a. Each property may be used once, more than once, or not at all. You may need to drag the split bar

between panes or scroll to view content.)



Answer:

Airline
Flight

Question: 6

DRAG DROP

The service has been deployed to Windows Azure.

Trey Research has provided version 1.3.0.0 of the assembly to support a change in the serialization format. The service must remain available during the transition to the new serialization format.

You need to ensure that the service is using the new assembly.

Which configuration setting should you add to the web.config? (To answer, drag the appropriate configuration elements to the correct location or locations in the answer area.)

a. Each configuration element may be used once, more than once, or not at all. You may need to drag the split bar between panes or scroll to view content.)

```

codeBase version="1.3.0.0" href="Trey.Serialization.dll"
bindingRedirect oldVersion="1.2.5.0" newVersion="1.3.0.0"
bindingRedirect oldVersion="1.2.0.0" newVersion="1.3.0.0"
runtime
location
<
<assemblyBinding xmlns="urn:schemas-microsoft-com:asm.v1">
  <dependentAssembly>
    <assemblyIdentity name="Trey.Serialization" />
    <
  </dependentAssembly>
</assemblyBinding>
</

```

Answer:

```

< runtime >
<assemblyBinding xmlns="urn:schemas-microsoft-com:asm.v1">
  <dependentAssembly>
    <assemblyIdentity name="Trey.Serialization" />
    < bindingRedirect oldVersion="1.2.0.0" newVersion="1.3.0.0"
  </dependentAssembly>
</assemblyBinding>
</ runtime >

```

Explanation:

See: <http://msdn.microsoft.com/en-us/library/7wd6ex19.aspx>

Question: 7

Errors occasionally occur when saving data using the FlightInfoContext ADO.NET Entity Framework context. Updates to the data are being lost when an error occurs.

You need to ensure that data is still saved when an error occurs by retrying the operation. No more than five retries should be performed.

Which code segment should you use as the body of the SaveChanges() method in the FlightInfoContext.es file?

- A.

```
for (var i = 0; i < 5; i++)
{
    try
    {
        return base.SaveChanges();
    }
    catch (SqlException ex)
    {
        if (IsTransient(ex.Number))
        {
            continue;
        }
    }
}
return base.SaveChanges();
```
- B.

```
var exception = new EntitySqlException();
while (exception.Data != 0 && exception.Data.Count < 5)
{
    try
    {
        return base.SaveChanges();
    }
    catch (EntitySqlException ex)
    {
        if (IsTransient(ex.HResult))
        {
            exception = ex;
        }
    }
}
return base.SaveChanges();
```

```
C C. for (var i = 0; i < 5; i++)
    {
        try
        {
            return base.SaveChanges();
        }
        catch (SqlException ex)
        {
            if (IsTransient(ex.Number))
            {
                break;
            }
        }
    }
return base.SaveChanges();
```

```
C D. for (var i = 0; i < 5; i++)
    {
        try
        {
            return base.SaveChanges();
        }
        catch (SqlException ex)
        {
            if (!IsTransient(ex.Number))
            {
                continue;
            }
        }
    }
return base.SaveChanges();
```

- A. Option A
- B. Option B
- C. Option C
- D. Option D

Answer: A

Question: 8

You are adding a new REST service endpoint to the FlightDataController controller. It returns flights from the consolidated data sources only for flights that are late.

You need to write a LINQ to Entities query to extract the required data.

Which code segment should you use?

- A.

```
var historical = LoadHistorical();
var query = _Context.FlightInfo.AsQueryable()
    .Join(historical, x => x.Flight, y => y.Flight, (x, y) => new { Current = x,
    Historical = y })
    .Where(x => x.Historical.WasLate)
    .Select(x => x.Current);
```
- B.

```
var historical = LoadHistorical();
var query = _Context.FlightInfo.AsEnumerable()
    .Where(x => historical.All(y => y.WasLate && x.Flight == y.Flight))
    .Select(x => x);
```
- C.

```
var historical = LoadHistorical();
var query = _Context.FlightInfo.AsQueryable()
    .Where(x => historical.Select(y => y.Flight).Contains(x.Flight))
    .Where(x => historical.Any(y => y.WasLate))
    .Select(x => x);
```
- D.

```
var historical = LoadHistorical();
var query = _Context.FlightInfo.AsEnumerable()
    .Join(historical, x => x.Flight, y => y.Flight, (x, y) => new { Current = x,
    Historical = y })
    .Where(x => x.Historical.WasLate)
    .Select(x => x.Current);
```

- A. Option A
B. Option B
C. Option C
D. Option D

Answer: D

Explanation:

D is right because you send result as REST so if you use "AsQueryable" the result is deferred to the next enumeration of your result.

D is not optimized but will work.

A will break at runtime.

Credits to Rem

Question: 9

Data provided by Consolidated Messenger is cached in the HttpContext.Cache object.

You need to ensure that the cache is correctly updated when new data arrives.

What should you do?

- A. Ensure that the EffectivePrivateBytesLimit value is greater than the size of the database file.
B. Change the sliding expiration of the cache item to 12 hours.
C. Use the SqlCacheDependency type configured with a connection string to the database file.
D. Use the CacheDependency type configured to monitor the SFTP target folder.

Answer: D

Question: 10

You need to load flight information provided by Consolidated Messenger.
Which should you use?

- A. SQL Server Data Transformation Services (DTS)
- B. EntityTransaction and EntityCommand
- C. Office Open XML
- D. OleDbConnection and OleDbDataReader

Answer: D

Thank You For Trying 70-487 PDF Demo

To try our 70-487 Premium Files visit link below:

<https://examsland.com/latest-exam-questions/70-487/>

Start Your 70-487 Preparation

Use Coupon **EL25 for extra 25% discount on the purchase of Practice Test Software.**