

Version: 30.0

Question: 1

You network contains one Active Directory domain named contoso.com.

You deploy a new virtual machine in Microsoft Azure, and then you run the Active Directory Domain Configuration Wizard as show in the exhibit. (Click the Exhibit button.)

Exhibit is Missing

You need to ensure that all of the users in contoso.com are replicated to the new domain controller in Azure.

What should you do?

- A. Configure Azure Active Directory Connect.
- B. Set up directory integration.
- C. Modify the Deployment Configuration option.
- D. Select the Domain Name System (DNS) server check box.

Answer: D

Question: 2

Your network contains one Active Directory domain named contoso.com. The domain contains 10 domain controllers and a read-only domain controller (RODC) named RODC01.

You need to ensure that when administrators create users in contoso.com, the default user principal name (UPN) suffix is litwareinc.com.

Which cmdlet should you use?

- A. the ntdsutil command
- B. the Set-ADDomain cmdlet
- C. the Install-ADDSDomain cmdlet
- D. the dsadd command
- E. the dsamain command
- F. the dsadmin command
- G. the net user command
- H. the Set-ADForest cmdlet

Answer: G

The following example demonstrates how to create a new UPN suffix for the users in the Fabrikam.com forest:

```
Set-ADForest -UPNSuffixes @{Add="headquarters.fabrikam.com"}
```

Reference: Creating a UPN Suffix for a Forest

[https://technet.microsoft.com/sv-se/library/Dd391925\(v=WS.10\).aspx](https://technet.microsoft.com/sv-se/library/Dd391925(v=WS.10).aspx)

Question: 3

Your network contains one Active Directory domain named contoso.com. The domain contains 10 domain controllers and a read-only domain controller (RODC) named RODC01.

You plan to replace a domain controller named DC1. DC1 has the schema operations master role.

You need to transfer the schema master role to another domain controller named DC10 before you remove Active Directory from DC1.

Which tool should you use?

- A. the ntdsutil command
- B. the Set-ADDomain cmdlet
- C. the Install-ADDSDomain cmdlet
- D. the dsadd command
- E. the dsamain command
- F. the dsmgmt command
- G. the net user command
- H. the Set-ADForest cmdlet

Answer: A

Explanation:

To transfer the schema master role using the command line:

Open Command Prompt.

Type:

ntdsutil

At the ntdsutil command prompt, type:

roles

At the fsmo maintenance command prompt, type:

connection

At the server connections command prompt, type:

connect to serverDomainController

At the server connections command prompt, type:

quit

At the fsmo maintenance command prompt, type:

transfer schema master

Reference: Transfer the schema master role

Question: 4

Your network contains an Active Directory domain named contoso.com. The domain contains a server named Server1 that runs Windows Server 2012 R2 and has the DHCP Server server role installed.

An administrator installs the IP Address Management (IPAM) Server feature on a server named Server2.

The administrator configures IPAM by using Group Policy based provisioning and starts server discovery.

You plan to create Group Policies for IPAM provisioning.

You need to identify which Group Policy object (GPO) name prefix must be used for IPAM Group Policies.

What should you do on Server2?

- A. From Server Manager, review the IPAM overview.

- B. Run the ipamgc.exe tool.
- C. From Task Scheduler, review the IPAM tasks.
- D. Run the Get-IpamConfiguration cmdlet.

Answer: D

Question: 5

You have two Hyper-V hosts named Host1 and Host2 that run Windows Server 2012 R2. Host1 has a virtual machine named VM1 that is replicated to Host2. The solution must ensure that clients continue to connect to VM1 on Host1.

Which cmdlet should you run?

- A. Compare-VM
- B. Export-VM
- C. Test-VMReplicationConnection
- D. State-VMFailover
- E. Move-VM

Answer: D

Explanation:

Start-VMFailover -AsTest

Creates a test virtual machine using the chosen recovery point. You can use a test virtual machine to validate a Replica virtual machine. To stop a test failover, use the Stop-VMFailover cmdlet.

The Start-VMFailover cmdlet can be used for the following tasks:

Fail over a Replica virtual machine to a chosen recovery point.

Start a planned failover on a primary virtual machine.

Create a test virtual machine on a Replica virtual machine.

Reference: Start-VMFailover

[https://technet.microsoft.com/en-us/library/jj136051\(v=wps.630\).aspx](https://technet.microsoft.com/en-us/library/jj136051(v=wps.630).aspx)

Question: 6

You perform a Server Core Installation of Windows Server 2012 R2 on a server named Server1.

You need to add a graphical user interface (GUI) to Server1.

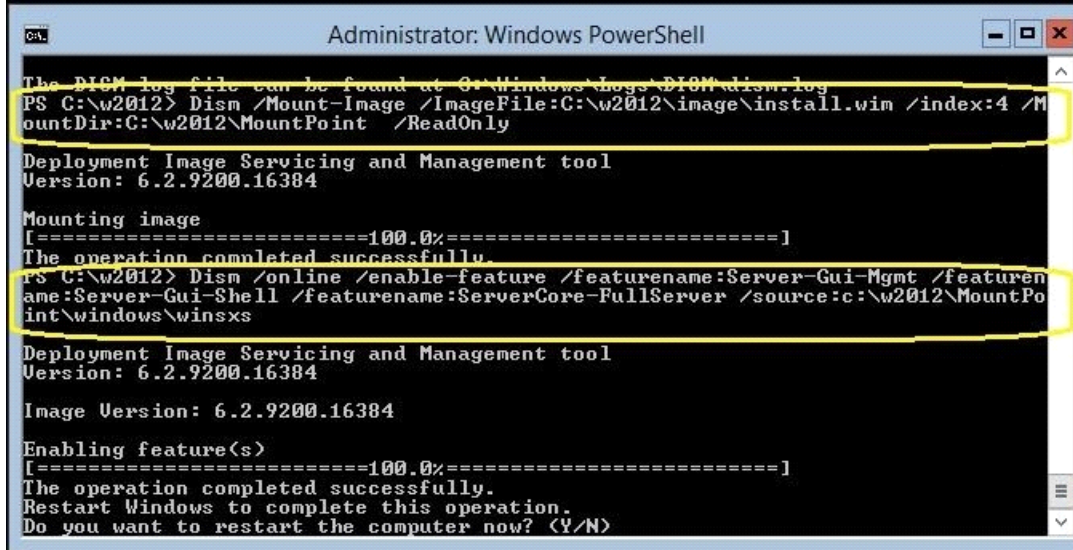
Which tool should you use?

- A. The imagex.exe command
- B. The ocsetup.exe command
- C. The setup.exe command
- D. The dism.exe command

Answer: D

The DISM command is called by the Add-WindowsFeature command. Here is the syntax for DISM:

Dism /online /enable-feature /featurename:ServerCore-FullServer /featurename:Server- Gui-Shell /featurename:Server-Gui-Mgmt



Question: 7

You have a server named Server1 that runs Windows Server 2012 R2. You plan to create an image of Server1. You need to remove the source files for all server roles that are not installed on Server1. Which tool should you use?

- A. dism.exe
- B. servermanagercmd.exe
- C. ocsetup.exe
- D. imagex.exe

Answer: A

Explanation:

servermanagercmd.exe The ServerManagerCmd.exe command-line tool has been deprecated in Windows Server 2008 R2. imagex.exe ImageX is a command-line tool in Windows Vista that you can use to create and manage Windows image (.wim) files. A .wim file contains one or more volume images, disk volumes that contain images of an installed Windows operating system. dism.exe Deployment Image Servicing and Management (DISM.exe) is a command-line tool that can be used to service a Windows image or to prepare a Windows Preinstallation Environment (Windows PE) image. It replaces Package Manager (Pkgmgr.exe), PEimg, and Intlcfg that were included in Windows Vista. The functionality that was included in these tools is now consolidated in one tool (DISM.exe), and new functionality has been added to improve the experience for offline servicing. DISM can Add, remove, and enumerate packages. ocsetup.exe The Ocsetup.exe tool is used as a wrapper for Package Manager (Pkgmgr.exe) and for Windows Installer (Msiexec.exe). Ocsetup.exe is a command-line utility that can be used to perform scripted installs and scripted uninstalls of Windows optional components. The Ocsetup.exe tool replaces the Sysocmgr.exe tool that Windows XP and Windows Server

2003i use.

<http://technet.microsoft.com/en-us/library/hh824822.aspx>

<http://blogs.technet.com/b/joscon/archive/2010/08/26/adding-features-with-dism.aspx>

<http://technet.microsoft.com/en-us/library/hh831809.aspx>

<http://technet.microsoft.com/en-us/library/hh825265.aspx>

Question: 8

You have a server named Server1 that runs Windows Server 2012 R2. Server1 has following storage spaces:

Data

Users

Backups

Primordial

You add an additional hard disk to Server1.

You need to identify which storage space contains the new hard disk.

Which storage space contains the new disk?

A. Primordial

B. Data

C. Backups

D. Users

Answer: A

Explanation:

New Disks (Unallocated space) added to Primordial spacePrimordial Pool? All storage that meets acceptable criteria for Storage Spaces will be placed in the Primordial Pool. This can be considered the default pool for devices from which any other pools will be created. Notice that there are no other virtual disks or pools at this point. The Primordial Pool will only consist of physical storage devices that do not belong to any other pools.

<http://blogs.technet.com/b/canitpro/archive/2012/12/13/storage-pools-dive-right-in.aspx> <http://blogs.technet.com/b/askpfeplat/archive/2012/10/10/windows-server-2012-storagespaces-is-it-for-youcould-be.aspx>

Question: 9

Your network contains an Active Directory domain named contoso.com. The domain contains a server named Server1. Server1 runs Windows Server 2012.

You create a group Managed Service Account named gservice1.

You need to configure a service named Service1 to run as the gservice1 account.

How should you configure Service1?

A. From a command prompt, run sc.exe and specify the config parameter.

B. From a command prompt, run sc.exe and specify the sdset parameter.

C. From the Services console, configure the General settings.

D. From Windows PowerShell, run Set-Service and specify the -Passthrough parameter.

Answer: A

To specify a binary path for the NEWSERVICE service, type:
sc config NewService binpath= "ntsd -d c:\windows\system32\NewServ.exe"
Reference: Sc config
<https://technet.microsoft.com/en-us/library/cc990290.aspx>
[http://technet.microsoft.com/en-us/library/cc738230\(v=ws.10\).aspx](http://technet.microsoft.com/en-us/library/cc738230(v=ws.10).aspx)

Question: 10

You have a server named Data1 that runs a Server Core Installation of Windows Server 2012 R2 Standard. You need to configure Data1 to run a Server Core Installation of Windows Server 2012 R2 Datacenter. You want to achieve this goal by using the minimum amount of administrative effort. What should you perform?

- A. An online servicing by using Dism
- B. An offline servicing by using Dism
- C. An upgrade installation of Windows Server 2012 R2
- D. A clean installation of Windows Server 2012 R2

Answer: A

Explanation:

- A. Not least effort
- B. Not least effort
- C. `dism /online /set-edition`
- D. offline would be less ideal and more workex: `DISM /online /Set-Edition:ServerEnterprise /ProductKey:489J6-VHDMP-X63PK-3K798-CPX3Y`Windows Server 2008 R2/2012 contains a command-line utility called DISM (Deployment Image Servicing and Management tool). This tool has many features, but one of those features is the ability to upgrade the edition of Windows in use. Note that this process is for upgrades only and is irreversible. You cannot set a Windows image to a lower edition. The lowest edition will not appear when you run the `/Get-TargetEditions` option. If the server is running an evaluation version of Windows Server 2012

R2 Standard or Windows Server 2012 R2 Datacenter, you can convert it to a retail version as follows:

If the server is a domain controller, you cannot convert it to a retail version. In this case, install an additional domain controller on a server that runs a retail version and remove AD DS from the domain controller that runs on the evaluation version. From an elevated command prompt, determine the current edition name with the command `DISM /online /Get-CurrentEdition`. Make note of the edition ID, an abbreviated form of the edition name. Then run `DISM /online /Set-Edition:<edition ID> /ProductKey:XXXXXXXXXX-XXXXX-XXXXXXXXXX`
`/AcceptEula`, providing the edition ID and a retail product key.

The server will restart twice.

<http://technet.microsoft.com/en-us/library/jj574204.aspx>

<http://technet.microsoft.com/en-us/library/dd744380%28v=ws.10%29.aspx>

http://blogs.technet.com/b/server_core/archive/2009/10/14/upgrading-

[without-media.aspx](http://blogs.technet.com/b/server_core/archive/2009/10/14/upgrading-without-media.aspx)

windows-server2008-r2-

<http://communities.vmware.com/people/vmroyale/blog/2012/05/30/howto-upgradingwindows-edition-with-dism>

Question: 11

Your network contains an Active Directory forest named contoso.com. The forest contains two domains named contoso.com and child.contoso.com and two sites named Site1 and Site2. The domains and the sites are configured as shown in following table.

Domain controller name	Domain name	Site name	Role
DC1	Contoso.com	Site1	Global catalog RID master PDC emulator
DC2	Contoso.com	Site1	Domain naming master Schema master Infrastructure master
DC3	Child.contoso.com	Site1	Infrastructure master RID master PDC emulator
DC4	Child.contoso.com	Site2	Not applicable

When the link between Site1 and Site2 fails, users fail to log on to Site2. You need to identify what prevents the users in Site2 from logging on to the child.contoso.com domain. What should you identify?

- A. The placement of the infrastructure master
- B. The placement of the global catalog server
- C. The placement of the domain naming master
- D. The placement of the PDC emulator

Answer: B

Question: 12

Your network contains an Active Directory forest that contains two domains. The forest contains five domain controllers.

The domain controllers are configured as shown in the following table.

Domain controller name	Domain	Global catalog server
DC1	Contoso.com	Yes
DC2	Contoso.com	Yes
DC3	Eu.contoso.com	No
DC4	Eu.contoso.com	No
DC5	Eu.contoso.com	No

You need to configure DC5 as a global catalog server.

Which tool should you use?

- A. Active Directory Administrative Center
- B. Active Directory Users and Computers
- C. Active Directory Sites and Services
- D. Active Directory Domains and Trusts

Answer: C

Explanation:

Active Directory Sites and Services can be used to Add or remove the global catalog read-only directory partitions from a domain controller in the site. Confirm that all read-only directory partitions have been replicated to the new global catalog server. As well as verify that the global catalog server is being advertised in Domain Name System (DNS).

References:

<http://technet.microsoft.com/en-us/library/cc730868.aspx>

<http://technet.microsoft.com/en-us/library/cc770674.aspx>

Question: 13

Your network contains an Active Directory forest. The forest contains a single domain named contoso.com. The domain contains four domain controllers.

The domain controllers are configured as shown in the following table.

Name	Operating system	Configuration
DC1	Windows Server 2008 R2	Domain naming master Schema master Global catalog
DC2	Windows Server 2012 R2	PDC emulator Global catalog
DC3	Windows Server 2008 R2	Infrastructure master
DC4	Windows Server 2012 R2	RID master Global catalog

All domain controllers are DNS servers.

You plan to deploy a new domain controller named DC5 in the contoso.com domain.

You need to identify which domain controller must be online to ensure that DC5 can be promoted successfully to a domain controller.

Which domain controller should you identify?

- A. DC1
- B. DC2
- C. DC3
- D. DC4

Answer: D

Question: 14

Your network contains an Active Directory forest named contoso.com. All domain controllers currently run Windows Server 2008 R2.

You plan to install a new domain controller named DC4 that runs Windows Server 2012 R2.

The new domain controller will have the following configurations:

Schema master

Global catalog server

DNS Server server role

Active Directory Certificate Services server role

You need to identify which configurations cannot be fulfilled by using the Active Directory Domain Services Configuration Wizard.

Which two configurations should you identify? (Each correct answer presents part of the solution. Choose two.)

- A. Enable the global catalog server.
- B. Transfer the schema master.
- C. Install the Active Directory Certificate Services role.
- D. Install the DNS Server role.

Answer: B, C

Explanation:

AD Installation Wizard will automatically install DNS and allows for the option to set it as a global catalog server. AD CS and schema must be done separately.

Specify domain controller capabilities and site information

Domain Name System (DNS) server

Global Catalog (GC)

Read only domain controller (RODC)

Site name:

Default-First-Site-Name

Type the Directory Services Restore Mode (DSRM) password

Password:

Confirm password:

Question: 15

You have a server named Server1 that runs Windows Server 2012.

You promote Server1 to a domain controller.

You need to view the service location (SRV) records that Server1 registers in DNS.

What should you do on Server1?

- A. Open the Netlogon.dns file.

- B. Run ipconfig /displaydns.
- C. Run Get-DnsServerDiagnostics.
- D. Open the SrC. sys file.

Answer: A

Explanation:

Netlogon.dns - If you are using non-Microsoft DNS servers to support Active Directory, you can verify SRV locator resource records by viewing Netlogon.dns. Netlogon.dns is located in the %systemroot%\System32\Config folder. You can use a text editor, such as Microsoft Notepad, to view this file.

The first record in the file is the domain controller's Lightweight Directory Access Protocol (LDAP) SRV record.

References:

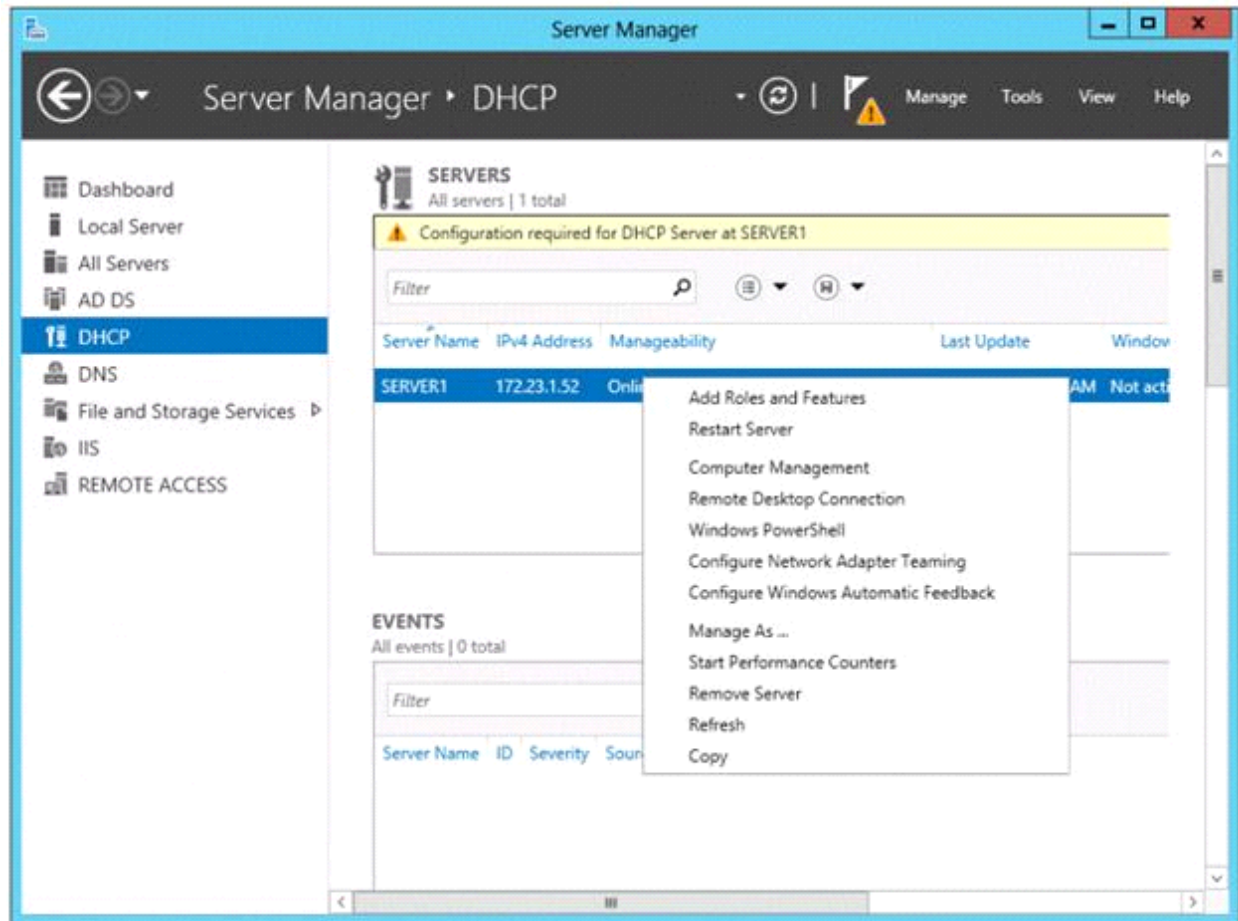
<http://support.microsoft.com/kb/816587/en-us>

Question: 16

Your network contains an Active Directory domain named adatum.com. The domain contains a member server named Server1 and a domain controller named DC2. All servers run Windows Server 2012 R2.

On DC2, you open Server Manager and you add Server1 as another server to manage.

From Server Manager on DC2, you right-click Server1 as shown in the exhibit. (Click the Exhibit button.)



You need to ensure that when you right-click Server1, you see the option to run the DHCP console. What should you do?

- A. On DC2, install the Role Administration Tools.
- B. On DC2 and Server1, run winrmquickconfig.
- C. In the domain, add DC2 to the DHCP Administrators group.
- D. On Server1, install the Feature Administration Tools.

Answer: A

Explanation:

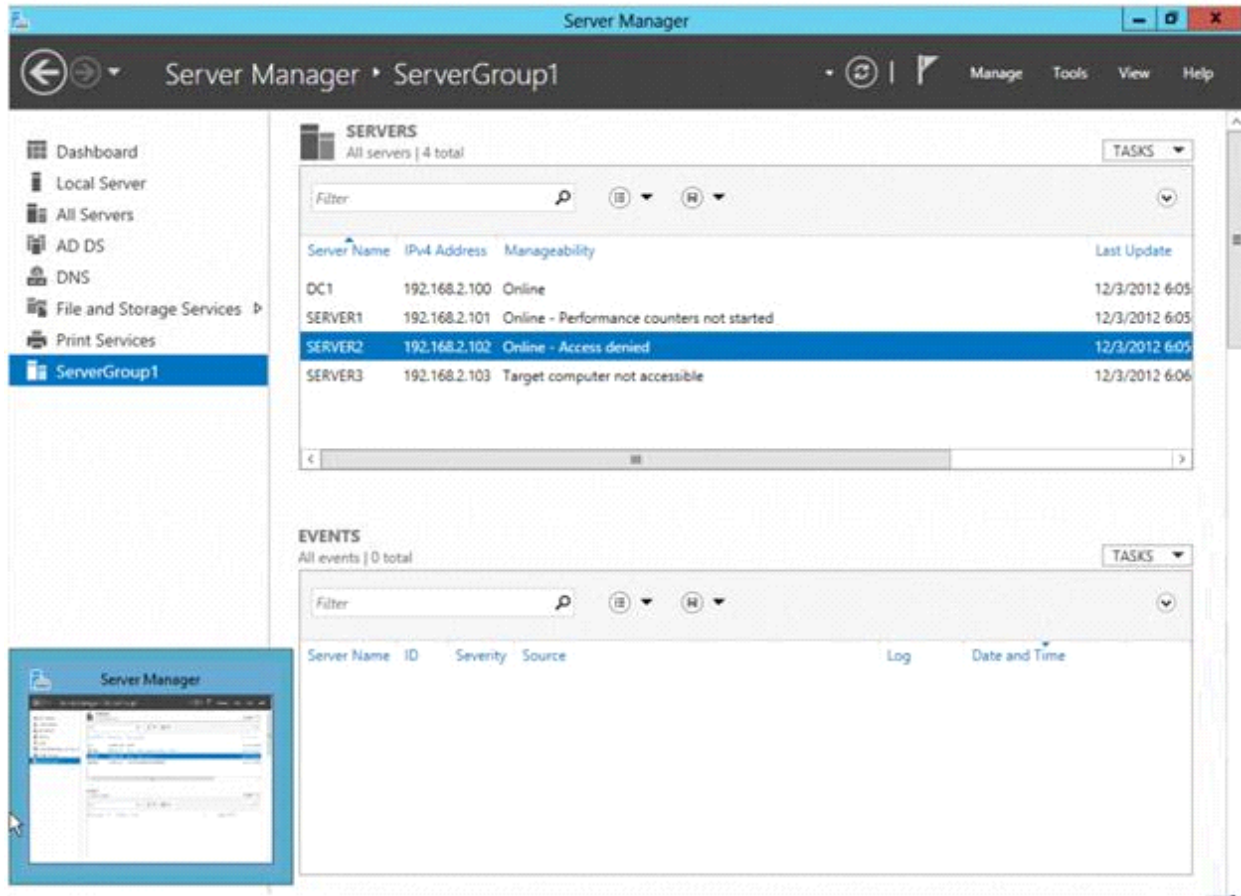
You need to install the feature administrations tools for the dhcp . Need to install DHCP management tools on DC2 then you will have access to dhcp management.

Question: 17

Your network contains an Active Directory domain named contoso.com. The domain contains three servers named Server1, Server2, and Server3.

You create a server group named ServerGroup1.

You discover the error message shown in the following exhibit. (Click the Exhibit button.)



You need to ensure that Server2 can be managed remotely by using Server Manager. What should you do?

- A. On Server2, run the netdom.exe command.
- B. On Server2, run the net stop netlogon command, and then run the net start netlogon command.
- C. On DC1, run the Enable-PSSessionConfigurationcmdlet.
- D. On Server2, modify the membership of the Remote Management Users group.

Answer: D

Explanation:

This is a security issue. To be able to access Server2 remotely through Server Manager the user need to be a member of the Remote Management Users group.

References:

Training Guide: Installing and Configuring Windows Server 2012, Chapter 3 Server Remote Management, Lesson 1: Server Manager, p. 90-92

Question: 18

Your network contains an Active Directory domain named contoso.com. All servers run Windows Server 2012 R2. The domain contains a server named Server1.

You install the Windows PowerShell Web Access gateway on Server1.

You need to provide administrators with the ability to manage the servers in the domain by using the Windows PowerShell Web Access gateway.

Which two cmdlets should you run on Server1? (Each correct answer presents part of the solution. Choose two.)

- A. Install-PswaWebApplication
- B. Add-PswaAuthorizationRule
- C. Set-WSManInstance
- D. Set-WSManQuickConfig
- E. Set-BCAAuthentication

Answer: A, B

Configure PowerShell Web Access Gateway using the following PowerShell Cmdlet.

Install-PswaWebApplication –UseTestCertificate

Running the cmdlet installs the Windows PowerShell Web Access web application within the IIS Default Web Site container. The cmdlet creates the infrastructure required to run Windows PowerShell Web Access on the default website, Error! Hyperlink reference not valid..

Add-PswaAuthorizationRule

Adds a new authorization rule to the Windows PowerShell Web Access authorization rule set.

Parameters:

ComputerGroupName

ComputerName

ConfigurationName

RuleName

UserGroupName

UserName

Credential (Windows Server 2012 R2 and later)

References:

<http://technet.microsoft.com/en-us/library/hh849867.aspx>

<http://technet.microsoft.com/en-us/library/hh849875.aspx>

[http://technet.microsoft.com/en-us/library/jj592890\(v=wps.620\).aspx](http://technet.microsoft.com/en-us/library/jj592890(v=wps.620).aspx)

[http://technet.microsoft.com/en-us/library/hh848404\(v=wps.620\).aspx](http://technet.microsoft.com/en-us/library/hh848404(v=wps.620).aspx)

[http://technet.microsoft.com/en-us/library/jj592894\(v=wps.620\).aspx](http://technet.microsoft.com/en-us/library/jj592894(v=wps.620).aspx)

Question: 19

Your network contains an Active Directory domain named contoso.com. The domain contains a server named Server1 that runs Windows Server 2012 and a server named Server2 that runs Windows Server 2008 R2 Service Pack 1 (SP1). Both servers are member servers.

On Server2, you install all of the software required to ensure that Server2 can be managed remotely from Server Manager.

You need to ensure that you can manage Server2 from Server1 by using Server Manager.

Which two tasks should you perform on Server2? (Each correct answer presents part of the solution. Choose two.)

- A. Run the Enable-PSRemotingcmdlet.
- B. Run the Configure-SMRemoting.ps1 script.
- C. Run the Enable-PSSessionConfigurationcmdlet.
- D. Run the Set-ExecutionPolicycmdlet.
- E. Run the systempropertiesremote.exe command.

Answer: B, D

Explanation:

To configure Server Manager remote management by using Windows PowerShell

On the computer that you want to manage remotely, open a Windows PowerShell session with elevated user rights.

In the Windows PowerShell session, type the following, and then press Enter.

Set-ExecutionPolicy –ExecutionPolicyRemoteSigned (D)

Type the following, and then press Enter to enable all required firewall rule exceptions.

Configure-SMRemoting.ps1 -force –enable (B)

Question: 20

Your network contains an Active Directory domain named contoso.com. The domain contains two member servers named Server1 and Server2 that run Windows Server 2012 R2.

You log on to Server1.

You need to retrieve the IP configurations of Server2.

Which command should you run from Server1?

- A. winrm get server2
- B. dsquery • -scope base -attrip/server2
- C. winrs -r:server2ipconfig
- D. ipconfig> server2.ip

Answer: C

Explanation:

Windows Remote Management allows you to manage and execute programs remotely

References:

Exam Ref 70-410: Installing and Configuring Windows Server 2012: Objective 4.3: Deploy and Configure the DNS service, Chapter 4 Deploying and Configuring core network services, p. 246

[http://technet.microsoft.com/en-us/library/dd349801\(v=ws.10\).aspx](http://technet.microsoft.com/en-us/library/dd349801(v=ws.10).aspx)

Thank You For Trying 70-417 PDF Demo

To try our 70-417 Premium Files visit link below:

<https://examsland.com/latest-exam-questions/70-417/>

Start Your 70-417 Preparation

Use Coupon **EL25 for extra 25% discount on the purchase of Practice Test Software.**