
Question: 1

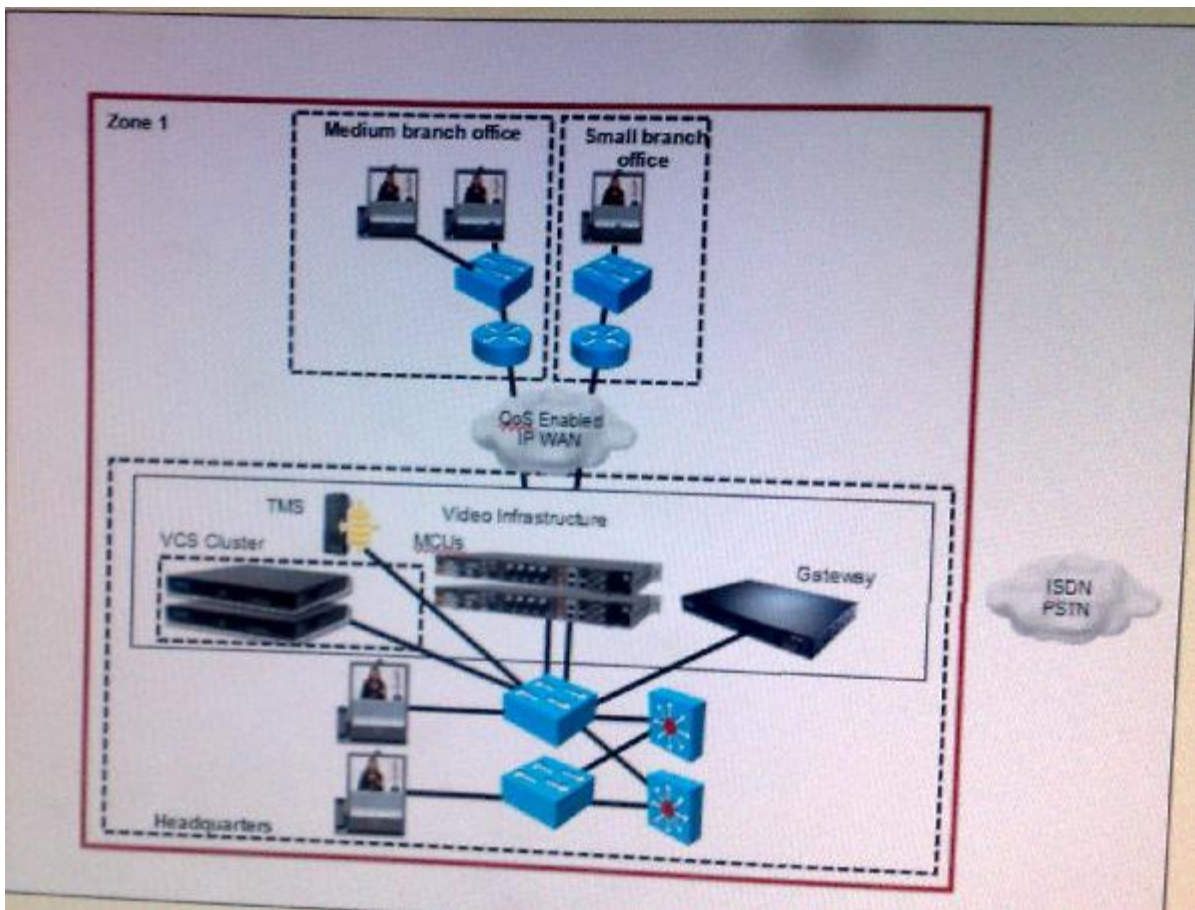
Why would you include include a gateway in your design?

- A. Gateways assist in video and conferencing integration
- B. Gateways allow for simplification of the address plan by elimination the need for dialing a full PSTN number
- C. Gateways provide network translation if varying protocols are used
- D. Gateways are required to integrate multiple endpoints

Answer: C

Question: 2

Refer to the exhibit, Which deployment model is represented?



- A. campus multizone
- B. WAN multizone
- C. campus single zone
- D. WAN single zone

Answer: D

Question: 3

Which three methods can be used to start a conference with the Cisco TelePresence Video Communication Server? (Choose three)

- A. Use the web interface of the Cisco TelePresence Video Communication Server
- B. Use the Cisco TelePresence System user interface
- C. Call directly into a conference from an endpoint
- D. Use a FindMe connection
- E. Connect to a VCS Expressway from an IP endpoint
- F. Receive a request-for-conference call from a connected user
- G. Use the Cisco TelePresence remote control

Answer: B, C, G

Question: 4

Which of these is an advantage of the multizone model VCS with Prefix Dialing?

- A. Location requests are only sent to the relevant zone
- B. Location VCS servers only need to know about the directory VCS and do not need to know about any other local VCS
- C. When adding a new zone, only the directory gatekeeper needs to be configured
- D. All gatekeepers know about all calls at times

Answer: A

Thank You For Trying 650-296 PDF Demo

To try our 650-296 Premium Files visit link below:

<https://examsland.com/latest-exam-questions/650-296/>

Start Your 650-296 Preparation

Use Coupon **EL25 for extra 25% discount on the purchase of Practice Test Software.**