

Nokia

Exam 4A0-105

NokiaVirtual Private LAN Services

Verson: Demo

[Total Questions: 10]

Topic break down

Topic	No. of Questions
Topic 1: Volume A	3
Topic 2: Volume B	6
Topic 3: Volume C	1

Topic 1, Volume A

Question No : 1 - (Topic 1)

What is the name of the feature supported on the Alcatel-Lucent 7750 SR that prevents MAC explosion in large VPLS deployments?

- A. H-VPLS
- B. M-VPLS
- C. PBB
- D. MC-EP

Answer: C

Question No : 2 - (Topic 1)

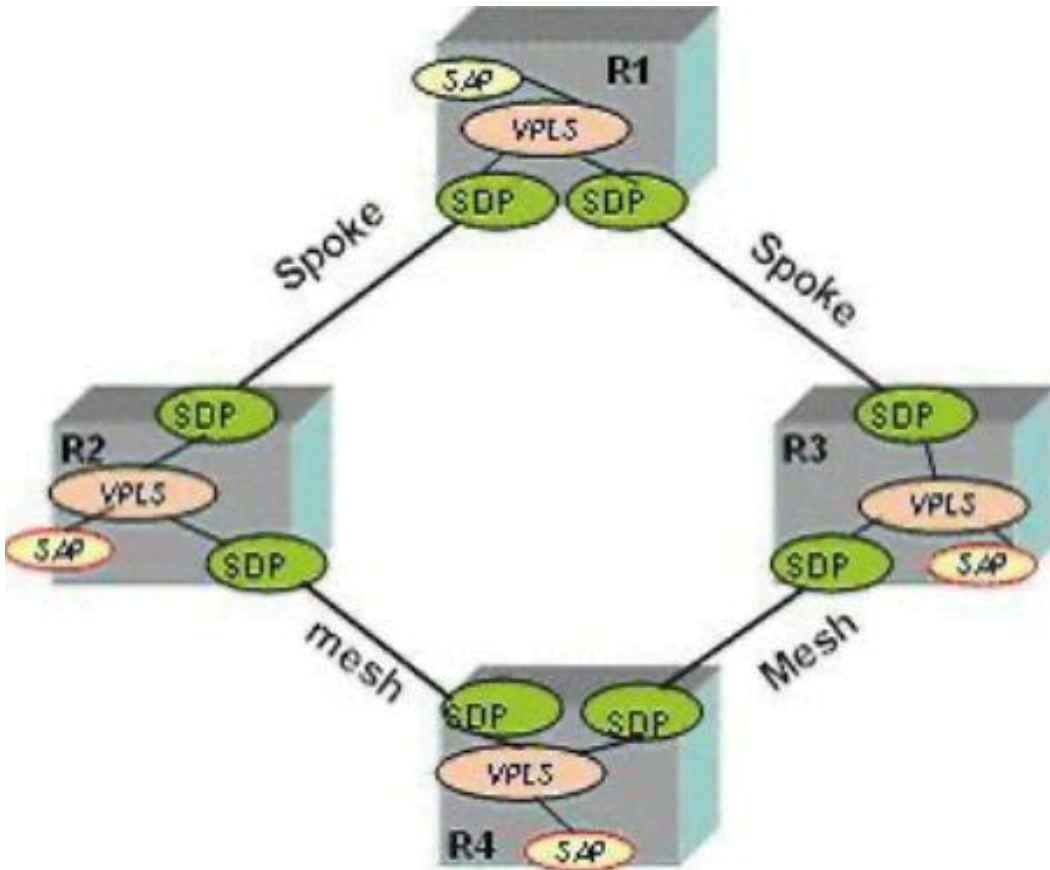
If the command "disable-learning" has been added at the VPLS level, then MAC entries which have already been learned will not be aged.

- A. TRUE
- B. FALSE

Answer: B

Question No : 3 - (Topic 1)

Click on the exhibit below.



The VPLS service MTU on R2 is 1514 bytes. What must the service MTU be on all other routers participating in the VPLS?

- A. The service MTU must be equal to or smaller than 1514 bytes.
- B. The service MTU must be 1514 bytes.
- C. The service MTU must be equal to or greater than 1514 bytes.
- D. The service MTU can be any value.

Answer: B

Topic 2, Volume B

Question No : 4 - (Topic 2)

How is MAC learning achieved in traditional Ethernet switches?

- A. As frames leave the switch, the DA is populated into the FDB.
- B. As frames enter the switch, the DA is populated into the FDB.
- C. As frames leave the switch, the SA is populated into the FDB.

D. As frames enter the switch, the SA is populated into the FDB.

Answer: D

Question No : 5 - (Topic 2)

Which service component in the data plane uniquely identifies a VPLS to the far end PE node?

- A. SDP id
- B. Service ID
- C. VC Label
- D. Tunnel Label
- E. Customer id

Answer: C

Question No : 6 - (Topic 2)

Which of the following OAM tools can be used as a VPLS topology discovery mechanism (Choose 2)?

- A. oam mac-ping
- B. oam mac-populate
- C. oamsvc-ping
- D. oam mac-trace

Answer: A,D

Question No : 7 - (Topic 2)

What is the default Spanning Tree protocol used in a VPLS on the Alcatel-Lucent 7750 SR?

- A. 802.1D2004
- B. 802.1D 1998
- C. comp-dot1w

D. PVST

Answer: A

Question No : 8 - (Topic 2)

H-VPLS solves the data-plane and control-plane problems with the exception of one issue. What is the concern that H-VPLS does not solve?

- A. Increased LSP count.
- B. Number of TLDP sessions.
- C. The amount of network touches.
- D. FDB consumption.
- E. Increased bandwidth and replication.

Answer: D

Question No : 9 - (Topic 2)

What type of SDP cannot be configured in an I-VPLS?

- A. Mesh-sdp
- B. Spoke-sdp
- C. MPLS
- D. GRE

Answer: A

Topic 3, Volume C

Question No : 10 - (Topic 3)

A LAG is configured with LACP passive mode enabled. When will LACP packets be sent?

- A. On initialization and then every hello-interval.
- B. Only after receiving LACP packets.
- C. Every 1 second.

D. Never.

Answer: B

Thank You For Trying 4A0-105 PDF Demo

To try our 4A0-105 Premium Files visit link below:

<https://examsland.com/latest-exam-questions/4A0-105/>

Start Your 4A0-105 Preparation

Use Coupon **EL25 for extra 25% discount on the purchase of Practice Test Software.**