

# **Nokia**

## **Exam 4A0-102**

### **Nokia Border Gateway Protocol**

**Verson: Demo**

**[ Total Questions: 10 ]**

**Question No : 1**

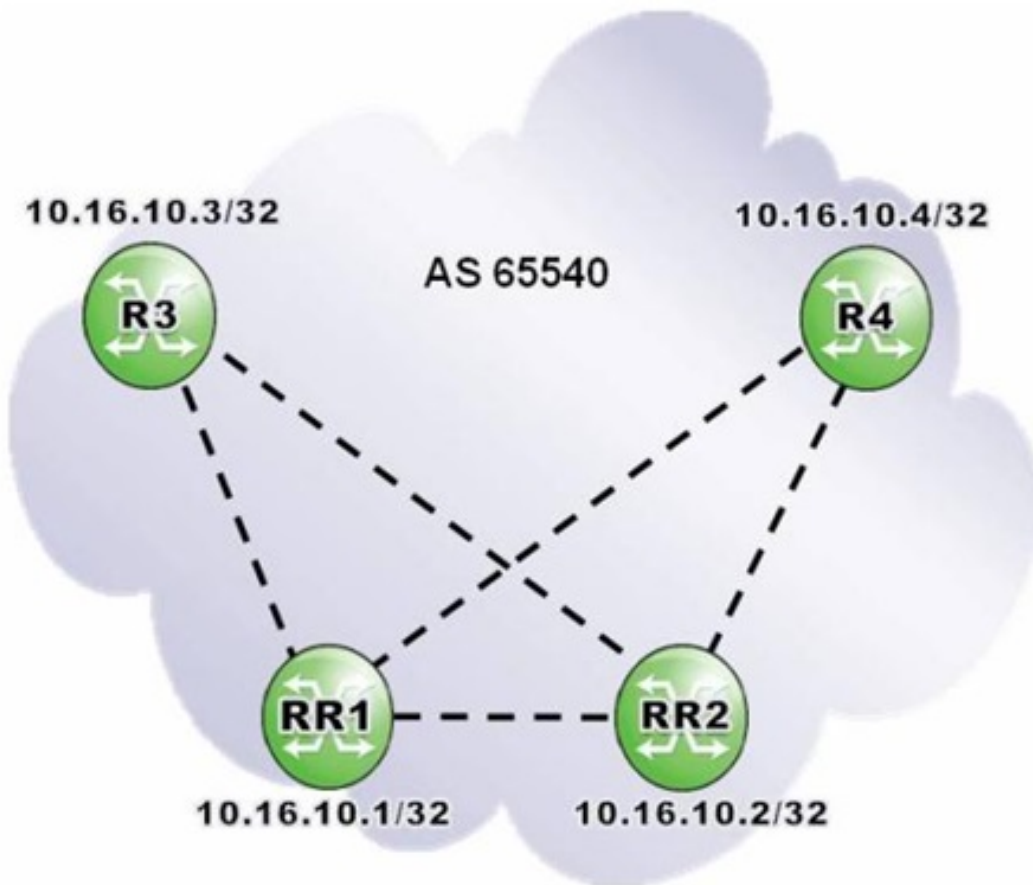
An Alcatel-Lucent 7750 SR receives two updates for the same route with local preferences 200 and 300, respectively. What local preference is sent to eBGP peers?

- A. 100
- B. 200
- C. 300
- D. None

**Answer: D**

**Question No : 2**

Click the exhibit.



Routers RR1 and RR2 are redundant route reflectors for clients R3 and R4. Which of the following is a valid configuration on router R3?

Nokia 4A0-102 : Practice Test

A. RR1>config>router>bgp# info

```
-----  
group "AS 65540 iBGP"  
  cluster 10.16.10.1  
  peer-as 65540  
  neighbor 10.16.10.2  
  exit  
  neighbor 10.16.10.3  
  exit  
  neighbor 10.16.10.4  
  exit  
exit
```

B. RR1>config>router>bgp# info

```
-----  
group "AS 65540 iBGP"  
  peer-as 65540  
  neighbor 10.16.10.2  
    cluster 10.16.10.2  
  exit  
  neighbor 10.16.10.3  
    cluster 10.16.10.1  
  exit  
  neighbor 10.16.10.4  
    cluster 10.16.10.1  
  exit  
exit
```

C. RR1>config>router>bgp# info

```
-----  
group "AS 65540 iBGP"  
  peer-as 65540  
  neighbor 10.16.10.2  
  exit  
  neighbor 10.16.10.3  
    cluster 10.16.10.1  
  exit  
  neighbor 10.16.10.4  
    cluster 10.16.10.1  
  exit  
exit
```

D. RR1>config>router>bgp# info

```
-----  
group "AS 65540 iBGP"  
  peer-as 65540  
  neighbor 10.16.10.3  
    cluster 10.16.10.1  
  exit  
  neighbor 10.16.10.4  
    cluster 10.16.10.1  
  exit  
exit
```

- A. Option A
- B. Option B
- C. Option C
- D. Option D

Answer: C

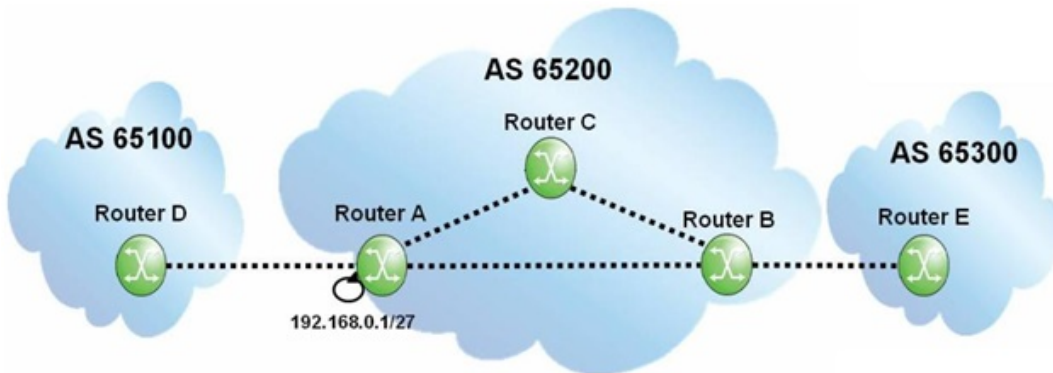
Which of the following statements regarding the Internet is FALSE?

- A. It is a global network relying on interconnections provided by Internet service providers.
- B. It is a continuous and interconnected set of public IP networks, advertised and shared across the globe.
- C. It is a settlement-free global network that provides interconnection between Internet service providers.
- D. It is a network that allows any Internet service provider to reach every other Internet service provider in the world.

Answer: C

Question No : 4

Click the exhibit.



If router A originates an update for prefix 192.168.0.1/27, what will the update contain when it reaches router B?

- A. AS Path of 65200, local-preference of 100.
- B. AS Path of 65200, local-preference of None.
- C. Null AS Path, local-preference of 100.
- D. Null AS Path, local-preference of None.

Answer: C

Question No : 5

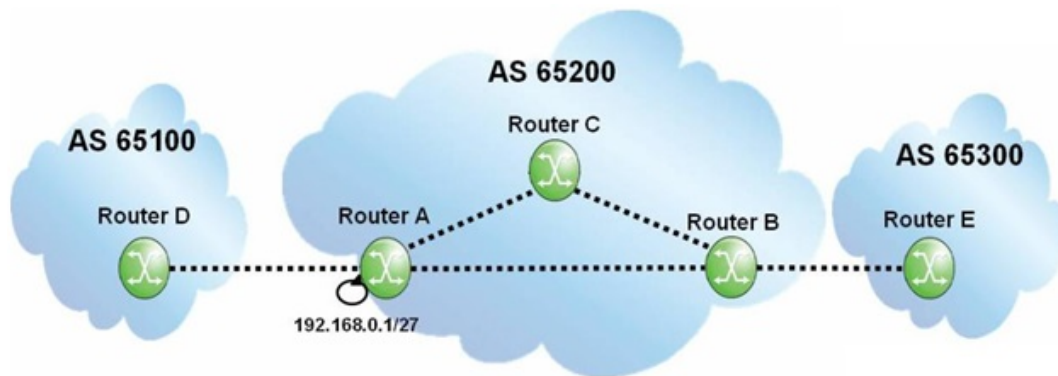
A router in AS 65100 receives three routes for 138.120.0.0/16. The first route has an AS Path of 65200 65400 65300 and a local preference of 150. The second route has an AS Path of 65200 65300 and a local preference of 100. The third route has an AS Path of 65600 65300 and a local preference of 100. Which route will appear in the RIB-out?

- A. Only the first route will appear in the RIB-Out.
- B. Only the second route will appear in the RIB-Out.
- C. Only the third route will appear in the RIB-Out.
- D. All routes will appear in the RIB-Out.

Answer: A

Question No : 6

Click the exhibit.



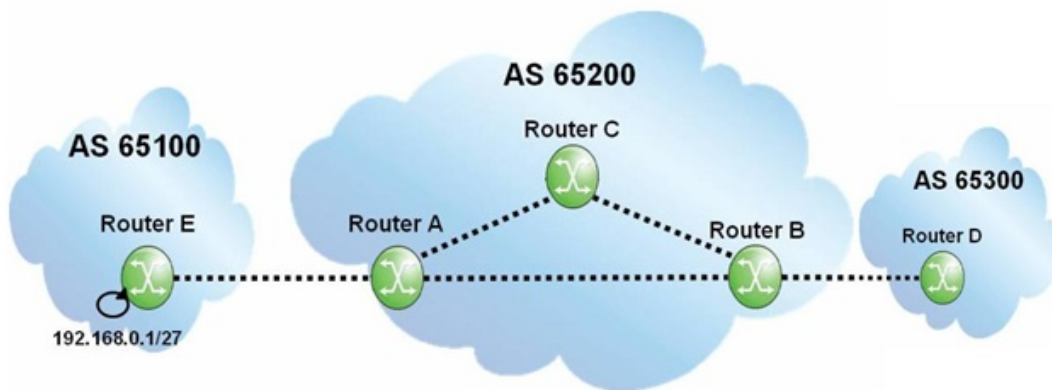
If router A originates a BGP route for prefix 192.168.0.1/27, what will the update contain when it reaches router B?

- A. AS Path of 65200, Next Hop of router A, Origin of IGP.
- B. AS Path of 65200, Next Hop of router A, Origin of incomplete.
- C. Null AS Path, Next Hop of router A, Origin of IGP.
- D. Null AS Path, Next Hop of router A, Origin of incomplete.

Answer: C

Question No : 7

Click the exhibit.



Assuming router A is configured with "next-hop-self", what does the BGP update for prefix 192.168.0.1/27 contain when it arrives at router B?

- A. AS Path of 65200 65100, Next Hop of router A.
- B. AS Path of 65200 65100, Next Hop of router E.
- C. AS Path of 65100, Next Hop of router A.
- D. AS Path of 65100, Next Hop of router E.

**Answer: C**

**Question No : 8**

Which of the following is FALSE regarding the 16-bit public autonomous system numbers?

- A. They are allocated to the RIRs by ICANN/IANA.
- B. They are used when connecting ASs on the Internet.
- C. They range from 1 to 56319.
- D. They are assigned by the ISPs for enterprise networks.

**Answer: D**

**Question No : 9**

Which of the following best describes the relationship between locally configured policies and the direction of traffic?

- A. Import policies affect the way the local AS receives traffic, while export policies affect the way it sends traffic.
- B. Import policies affect the way the local AS sends traffic, while export policies affect the way it receives traffic.
- C. Both import and export policies affect the way the local AS receives traffic, but not the way it sends traffic.
- D. Both import and export policies affect the way the local AS sends traffic, but not the way it receives traffic.

**Answer: B**

**Question No : 10**

Which of the following is NOT considered an option of import policies?

- A. Preventing unwanted NLRI from entering the AS.
- B. Filtering NLRI based on AS Path or prefix-lists,
- C. Modifying the local preference of route advertisements.
- D. Setting MED values of route advertisements.

**Answer: D**

**Thank You For Trying 4A0-102 PDF Demo**

**To try our 4A0-102 Premium Files visit link below:**

**<https://examsland.com/latest-exam-questions/4A0-102/>**

**Start Your 4A0-102 Preparation**

**Use Coupon **EL25** for extra 25% discount on the purchase of Practice Test Software.**