

## Version: 13.0

---

### Question: 1

---

Which description of an import operation in Cisco UCS Manager is true?

- A. You can perform an import while the system is up and running.
- B. You can import only a configuration file that was exported from the same Cisco UCS Manager.
- C. You can import a configuration from a higher release to a lower release.
- D. You can schedule an import operation.

---

**Answer: A**

---

Explanation:

You can perform an import while the system is up and running.

You can import any configuration file that was exported from Cisco UCS Manager. The file does not need to have been exported from the same Cisco UCS Manager. You cannot schedule an import operation.

Reference:

[https://www.cisco.com/en/US/docs/unified\\_computing/ucs/sw/gui/config/guide/141/UCSM\\_GUI\\_Configuration\\_Guide\\_141\\_chapter43.html#task\\_B89DEDCFCDE54E9C81E67C53FAC4DEC6](https://www.cisco.com/en/US/docs/unified_computing/ucs/sw/gui/config/guide/141/UCSM_GUI_Configuration_Guide_141_chapter43.html#task_B89DEDCFCDE54E9C81E67C53FAC4DEC6)

[https://www.cisco.com/c/en/us/td/docs/unified\\_computing/ucs/ucs-manager/GUI-User-Guides/AdminManagement/3-1/b\\_Cisco\\_UCS\\_Admin\\_Mgmt\\_Guide\\_3\\_1/b\\_Cisco\\_UCS\\_Admin\\_Mgmt\\_Guide\\_3\\_1\\_chapter\\_01001.pdf](https://www.cisco.com/c/en/us/td/docs/unified_computing/ucs/ucs-manager/GUI-User-Guides/AdminManagement/3-1/b_Cisco_UCS_Admin_Mgmt_Guide_3_1/b_Cisco_UCS_Admin_Mgmt_Guide_3_1_chapter_01001.pdf)

You cannot import configuration from a higher release to a lower release.

---

### Question: 2

---

When a configuration change requires a reboot, which policy specifies how Cisco UCS manager should proceed?

- A. host firmware policy
- B. local disk policy
- C. maintenance policy
- D. boot policy

---

**Answer: C**

---

Explanation:

Use the Maintenance Policy to specify how Cisco UCS Manager should proceed for configuration changes that will have a service impact or require a server reboot. Values for the Maintenance Policy can be "immediate", "user-ack", or "timer automatic". The best practice is to not use the "default"

policy, and instead to create and use Maintenance Policies for either "user-ack" or "timer automatic", and to always have these as elements of the Service Profile or Service Profile Template definition. [http://www.cisco.com/c/en/us/products/collateral/servers-unified-computing/ucs-manager/whitepaper\\_c11-697337.html](http://www.cisco.com/c/en/us/products/collateral/servers-unified-computing/ucs-manager/whitepaper_c11-697337.html)

---

### Question: 3

---

You are creating service profiles for a Cisco UCS system by using the service profile wizard. You discover that you forgot to create the UUID pool. What should you do?

- A. From the wizard, click Create UUID Suffix Pool.
- B. Pause the running wizard, and then start a temporary wizard to create a profile with the same name and the missing UUID pool. Resume the wizard, and then select the new UUID pool.
- C. Continue running the wizard. The service profile uses the burned-in UUID in the BIOS of the server.
- D. Stop the wizard, and then restart the wizard.

---

**Answer: A**

---

Explanation:

Step 4

(Optional) If you want to create a new UUID Suffix pool to use in this service profile, click Create UUID Suffix

Pool and complete the fields in the Create UUID Suffix Pool wizard.

For more information, see Creating a UUID Suffix Pool.

Reference:

[https://www.cisco.com/en/US/docs/unified\\_computing/ucs/sw/gui/config/guide/141/UCSM\\_GUI\\_Configuration\\_Guide\\_141\\_chapter24.html](https://www.cisco.com/en/US/docs/unified_computing/ucs/sw/gui/config/guide/141/UCSM_GUI_Configuration_Guide_141_chapter24.html)

---

### Question: 4

---

Which two features in Cisco UCS Manager are required to configure Uplink Ethernet ports? (Choose two.)

- A. vNIC templates
- B. LAN Pin Groups
- C. VLAN groups
- D. adapter policies
- E. link profiles

---

**Answer: A, B**

---

Explanation:

Reference:

<https://www.cisco.com/c/en/us/support/docs/servers-unified-computing/ucs-6120xp-20-port-fabricinterconnect/110267-ucs-uplink-ethernet-connection.html#configUplinkEthernet>  
[https://www.cisco.com/c/en/us/td/docs/unified\\_computing/ucs/sw/gui/config/guide/2-2/](https://www.cisco.com/c/en/us/td/docs/unified_computing/ucs/sw/gui/config/guide/2-2/)

b\_UCSM\_GUI\_Configuration\_Guide\_2\_2/using\_the\_lan\_uplinks\_manager.html

---

### Question: 5

---

You need to design and implement a Cisco UCS 5108 Blade Server Chassis system for a customer. Which statement about how half-width blades and full-width blades can be used is true?

- A. Only two full-width blades can be installed in the top two slots, and four half-width blades can be installed in the bottom two slots.
- B. Only one full-width blade can be installed in the top slot, and six half-width blades can be installed in the bottom slots.
- C. Half-width blades and full-width blades can be combined in any order.
- D. Half-width blade types and full-width blade types cannot be combined.

---

**Answer: C**

---

Explanation:

Mixed blade configurations Allows up to 8 half-width or 4 full-width blade servers, or any combination thereof, for outstanding flexibility.

When configured with the 6324 Fabric Interconnect, only 8 half-width B200 M3 blades are supported.

[https://www.cisco.com/c/en/us/td/docs/unified\\_computing/ucs/hw/chassis-install-guide/ucs5108\\_install/ucs5108\\_install\\_chapter\\_01.htm](https://www.cisco.com/c/en/us/td/docs/unified_computing/ucs/hw/chassis-install-guide/ucs5108_install/ucs5108_install_chapter_01.htm)

---

### Question: 6

---

Before upgrading a Cisco UCS cluster. you need to verify the high-availability statue and roles of the cluster.

In which scenario can you successfully perform the upgrade'?

- A. When you check the Cisco UCS Manager GUI, the Ready field value is Ready and the State field value is On. When you check the Cisco UCS Manager CLI, the Primary and Secondary interconnect state are both ON and the cluster state is HA WAITING.
- B. When you check the Cisco UCS Manager GUI, the Ready field value is Yes and the State field value is Up. When you check the Cisco UCS Manager CLI, the Primary and Secondary interconnect state are both UP and the cluster state is HA READY.
- C. When you check the Cisco UCS Manager GUI, the Ready field value is Ready and the State field value is Active. When you check the Cisco UCS Manager CLI, the Primary and Secondary interconnect state are both READY and the cluster state is HA WAITING.
- D. When you check the Cisco UCS Manager GUI, the Ready field value is Ready and the State field value is Up. When you check the Cisco UCS Manager CLI, the Primary and Secondary interconnect state are both UP and the cluster state is HA UP.

---

**Answer: B**

---

Explanation:

When you check the Cisco UCS Manager GUI, the Ready field value is Yes and the State field value is

Up.

When you check the Cisco UCS Manager CLI, the Primary and Secondary interconnect state are both UP and the cluster state is HA READY.

Reference:

[https://www.cisco.com/c/en/us/td/docs/unified\\_computing/ucs/sw/firmware-mgmt/gui/2-2/b\\_GUI\\_Firmware\\_Management\\_22/b\\_GUI\\_Firmware\\_Management\\_22\\_chapter\\_011.pdf](https://www.cisco.com/c/en/us/td/docs/unified_computing/ucs/sw/firmware-mgmt/gui/2-2/b_GUI_Firmware_Management_22/b_GUI_Firmware_Management_22_chapter_011.pdf)

[https://www.cisco.com/c/en/us/td/docs/unified\\_computing/ucs/ucs-manager/CLI-User-Guides/FirmwareMgmt/3-](https://www.cisco.com/c/en/us/td/docs/unified_computing/ucs/ucs-manager/CLI-User-Guides/FirmwareMgmt/3-1/b_UCSM_CLI_Firmware_Management_Guide_3_1/b_UCSM_GUI_Firmware_Management_Guide_3_1_chapter_010.html#task_F5AC1A117B4F499D9DCFC221E2BC20AB)

[1/b\\_UCSM\\_CLI\\_Firmware\\_Management\\_Guide\\_3\\_1/b\\_UCSM\\_GUI\\_Firmware\\_Management\\_Guide\\_3\\_1\\_chapter\\_010.html#task\\_F5AC1A117B4F499D9DCFC221E2BC20AB](https://www.cisco.com/c/en/us/td/docs/unified_computing/ucs/ucs-manager/CLI-User-Guides/FirmwareMgmt/3-1/b_UCSM_CLI_Firmware_Management_Guide_3_1/b_UCSM_GUI_Firmware_Management_Guide_3_1_chapter_010.html#task_F5AC1A117B4F499D9DCFC221E2BC20AB)

---

### Question: 7

---

Which destination(s) are valid for syslog messages for a Cisco UCS Fabric Interconnect?

- A. the log, the monitor and syslog queue
- B. a file
- C. the console and log only
- D. the console, the monitor, and a file

---

**Answer: D**

---

Explanation:

[http://www.cisco.com/c/en/us/td/docs/unified\\_computing/ucs/sw/ucsm\\_syslog/b\\_Monitoring\\_Cisco\\_UCSM\\_Using\\_Syslog/b\\_Monitoring\\_Cisco\\_UCSM\\_Using\\_Syslog\\_chapter\\_010.html](http://www.cisco.com/c/en/us/td/docs/unified_computing/ucs/sw/ucsm_syslog/b_Monitoring_Cisco_UCSM_Using_Syslog/b_Monitoring_Cisco_UCSM_Using_Syslog_chapter_010.html)

---

### Question: 8

---

You plan to use AAA security services for a Cisco UCS Fabric Interconnect. Which two authentication protocols can you use? (Choose two.)

- A. NTLM
- B. Kerberos
- C. RADIUS
- D. Diameter
- E. LDAP

---

**Answer: C, E**

---

Explanation:

Cisco UCS supports two methods to authenticate user logins:

Through user accounts local to Cisco UCS Manager. Remotely through one of the following protocols:

LDAP

RADIUS

TACACS+

Reference: <https://supportforums.cisco.com/t5/security-documents/ucs-fabric-intreconnect-integration-withacs-5-4-tacacs/ta-p/3149332>

---

### Question: 9

---

You need to identify which DCB standard provides these functionalities: negotiation capabilities for features, the distribution of parameters from one node to another, and logical link up and down signaling for both Ethernet and Fibre Channel interfaces.

Which DCB standard should you identify?

- A. ETS
- B. PFC
- C. DCBX
- D. QCN

---

**Answer: C**

---

---

### Question: 10

---

You configure FCoE in a Cisco UCS system at a customer site. The configuration seems correct, but the customer complains that the system fails to perform as expected. FCoE VLAN discovery, FCF discovery and FLOGI processes work properly. The issue appears to be with the Fibre Channel commands and responses.

What is a possible cause of the issue?

- A. The storage device is experiencing configuration or compatibility issues when the FIP process completes successfully.
- B. The routed Layer 3 network between the FCoE SAN and the storage device is experiencing issues when the FIP process fails to complete successfully.
- C. The FCoE configuration is experiencing errors because of issues with the Fibre Channel commands.
- D. The switched Layer 2 network between the FCoE SAN and the storage device is experiencing issues when the FIP process fails to complete successfully.

---

**Answer: D**

---

Explanation:

Make sure that your native vlan is carried across all the trunk ports.

Reference:

<https://supportforums.cisco.com/t5/storage-networking/fip-and-native-vlan/td-p/2451783>

---

### Question: 11

---

You need to configure a new Fibre Channel port channel from the Cisco UCS Manager GUI. To do this, from the SAN tab, you navigate to SAN Cloud > Fabric A or B > FC Port Channels, and you click the plus sign. In the popup window, you specify the Fibre Channel port channel name and ID.

Which two rules should you follow when you set the Fibre Channel port channel name and ID? (Choose two.)

- A. The Name field must be a number.

- B. The ID field can contain ASCII characters, except for spaces.
- C. The Name field is optional, but it cannot contain spaces.
- D. The Fibre Channel port channel ID is optional.
- E. The Fibre Channel port channel ID must be a number.

---

**Answer: C, E**

---

Explanation:

The identifier for the port channel.

Enter an integer between 1 and 256. This ID cannot be changed after the port channel has been saved. Name field A user-defined name for the port channel.

This name can be between 1 and 16 alphanumeric characters. You cannot use spaces or any special characters other than - (hyphen), \_ (underscore), : (colon), and . (period), and you cannot change this name after the object has been saved.

The Fibre Channel port channel ID is NOT optional

The ID field CANNOT contain ASCII characters, OR spaces.

The Name field must be a number IS NOT CORRECT.

The Fibre Channel port channel ID must be a number. IS CORRECT The Name field is optional, but it cannot contain spaces. IS CORRECT

The name field is optional (notice the "Next >" button is available when the name field is empty).

---

### Question: 12

---

Which Cisco UCS blade server supports the highest I/O throughput?

- A. Cisco UCS B420 M3 Blade Server
- B. Cisco UCS B200 M3 Blade Server
- C. Cisco UCS B22 M3 Blade Server
- D. Cisco UCS B200 M4 Blade Server

---

**Answer: A**

---

Explanation:

B420 M4 = 160G I/O BW

[https://www.cisco.com/c/en/us/products/collateral/servers-unified-computing/ucs-b-series-blade-servers/data\\_sheet\\_c78-706100.html](https://www.cisco.com/c/en/us/products/collateral/servers-unified-computing/ucs-b-series-blade-servers/data_sheet_c78-706100.html)

[https://www.cisco.com/c/en/us/products/collateral/servers-unified-computing/ucs-b-series-blade-servers/data\\_sheet\\_c78-706603.html](https://www.cisco.com/c/en/us/products/collateral/servers-unified-computing/ucs-b-series-blade-servers/data_sheet_c78-706603.html)

[https://apps.cisco.com/ccw/cpc/guest/content/ucsModelDetails/model\\_b200m4](https://apps.cisco.com/ccw/cpc/guest/content/ucsModelDetails/model_b200m4)

<https://www.cisco.com/c/en/us/products/collateral/servers-unified-computing/ucs-b200-m4-blade-server/datasheet-c78-732434.html>

---

### Question: 13

---

You have a Cisco UCS system. You need to create VSAN 100 on 2 Cisco Nexus Series switch and to enable switch port fc1/10 as a member for the VLAN.

Which command set should you use?

- A. SITE-A-MDS-Fabric-A# vsan databaseSITE-A-MDS-Fabric-A (vsan-db)# vsan 100 interface fc1/10SITE-A-MDS-Fabric-A (vsan-db)# vsan database commitSITE-A-MDS-Fabric-A (vsan-db)# exit
- B. SITE-A-MDS-Fabric-A# configure terminalSITE-A-MDS-Fabric-A (config)# vsan databaseSITE-A-MDS-Fabric-A (config-vsan-db)# vsan 100 interface fc1/10SITE-A-MDS-Fabric-A (config-vsan-db)# exit
- C. SITE-A-MDS-Fabric-A# configure terminal SITE-A-MDS-Fabric-A (config)# vsan databaseSITE-A-MDS-Fabric-A (config-vsan-db)# vsan 100 interface fc1/10SITE-A-MDS-Fabric-A (config-vsan-db)# vsan database commit
- D. SITE-A-MDS-Fabric-A# configure terminalSITE-A-MDS-Fabric-A (config)# vsan databaseSITE-A-MDS-Fabric-A(config-vsan-db)# vsan 100 interface fc1/10SITE-A-MDS-Fabric-A (config-vsan-db)# vsan database commitSITE-A-MDS-Fabric-A (config-vsan-db)# exit

---

**Answer: C**

---

Explanation:

Reference:

[https://www.cisco.com/en/US/docs/storage/san\\_switches/mds9000/sw/san-os/quick/guide/qcg\\_vin.html](https://www.cisco.com/en/US/docs/storage/san_switches/mds9000/sw/san-os/quick/guide/qcg_vin.html)

---

### **Question: 14**

---

Which two prerequisites are required to configure a SAN boot from the FCoE storage of a Cisco UCS system? (Choose two.)

- A. The Cisco UCS domain must be able to communicate with the SAN storage device that hosts the operating system image.
- B. A boot policy must be created that contains a local disk, and the LVM must be configured correctly.
- C. There must be iVR-enabled FCoE proxying between the Cisco UCS domain and the SAN storage device that hosts the operating system image.
- D. There must be a boot target LUN on the device where the operating system image is located.
- E. There must be a boot target RAID on the device where the operating system image is located.

---

**Answer: C, D**

---

---

### **Question: 15**

---

At a customer site, a Cisco UCS cluster must be renamed due to a domain name change. You need to recommend a solution to ensure that Cisco UCS Manager can be accessed over HTTPS.

Which solution accomplishes this goal?

- A. The cluster must be reinstalled, in order to generate the default key ring certificate.
- B. A default key ring certificate regeneration request must be issued from Cisco UCS Manager.
- C. The default key ring certificate must be renewed automatically when the name changes.
- D. The default key ring certificate must be regenerated manually.

---

**Answer: D**

---

Explanation:

The cluster must be reinstalled, in order to generate the default key ring certificate. NOT CORRECT A default key ring certificate regeneration request must be issued from Cisco UCS Manager. NOT CORRECT (NOT AN OPTION THROUGH UCSM)

The default key ring certificate must be renewed automatically when the name changes. NOT CORRECT (NOT AUTOMATIC. MUST BE DONE THROUGH CLI)

The default key ring certificate must be regenerated manually. CORRECT

[https://www.cisco.com/c/en/us/td/docs/unified\\_computing/ucs/sw/cli/config/guide/2-0/b\\_UCSM\\_CLI\\_Configuration\\_Guide\\_2\\_0/b\\_UCSM\\_CLI\\_Configuration\\_Guide\\_2\\_0\\_chapter\\_0110.pdf](https://www.cisco.com/c/en/us/td/docs/unified_computing/ucs/sw/cli/config/guide/2-0/b_UCSM_CLI_Configuration_Guide_2_0/b_UCSM_CLI_Configuration_Guide_2_0_chapter_0110.pdf)

The default key ring certificate must be manually regenerated if the cluster name changes or the certificate expires.

---

### Question: 16

---

To boot from SAN, you must perform which two configurations on a Cisco UCS system? (Choose two.)

- A. Enter the boot LUN and the nWWNs.
- B. Put the boot VSAN in a dedicated boot service profile template.
- C. Create a LUN, and allow the server WWPN to have access to the LUN.
- D. Put the server WWPN and the storage array WWPN in the same zone.
- E. Create a dedicated boot VSAN.

---

**Answer: C, D**

---

Explanation:

Reference:

<http://jeffsaidso.com/2010/11/boot-from-san-101-with-cisco-ucs>

---

### Question: 17

---

Which two Cisco UCS firmware are contained in the Cisco UCS Infrastructure software bundle? (Choose two.)

- A. Cisco I/O module firmware
- B. Cisco UCS IMC
- C. Cisco UCS BIOS
- D. Cisco UCS fabric interconnects firmware
- E. Cisco UCS adapters

---

**Answer: A, D**

---

Explanation: Explanation for A, D:

"A" BUNDLE

Infrastructure software bundle — This bundle is also called the A bundle. It contains the firmware



images that the fabric interconnects, IO Modules, and Cisco UCS Manager require to function.

#### "B" BUNDLE

B-Series server software bundle — Also called the B bundle, this bundle contains the firmware images that the B-Series blade servers require to function, such as adapter, BIOS, CIMC, and board controller firmware. Release Bundle Contents for Cisco UCS Manager, Release 3.1 provides details about the contents of the BSeries server software bundle.

Reference:

[https://www.cisco.com/c/en/us/td/docs/unified\\_computing/ucs/ucs-manager/GUI-User-Guides/FirmwareMgmt/3-1/b\\_UCSM\\_GUI\\_Firmware\\_Management\\_Guide\\_3\\_1/b\\_UCSM\\_GUI\\_Firmware\\_Management\\_Guide\\_3\\_1\\_chapter\\_01.html](https://www.cisco.com/c/en/us/td/docs/unified_computing/ucs/ucs-manager/GUI-User-Guides/FirmwareMgmt/3-1/b_UCSM_GUI_Firmware_Management_Guide_3_1/b_UCSM_GUI_Firmware_Management_Guide_3_1_chapter_01.html)

---

### Question: 18

---

A server discovery policy is defined in Cisco UCS Manager.

Which two actions are initiated by the policy when a new server starts? (Choose two.)

- A. The qualification in the server discovery policy is executed against the server.
- B. The scrub policy is applied to the server, if configured.
- C. A service profile is created for the server with the identity burned into the server at time of manufacture.
- D. The inventory of the server is analyzed.
- E. The server is assigned to the selected organization, if configured.

---

**Answer: B, E**

---

---

### Question: 19

---

You need to provision iSCSI initiator IP pools on a Cisco UCS system.

How many iSCSI vNICs can you use per boot policy?

- A. 2
- B. 4
- C. 6
- D. 8

---

**Answer: A**

---

Explanation:

You can add up to two iSCSI vNICs per boot policy. One vNIC acts as the primary iSCSI boot source, and the other acts as the secondary iSCSI boot source.

Reference:

[https://www.cisco.com/c/en/us/td/docs/unified\\_computing/ucs/sw/gui/config/guide/2-2/b\\_UCSM\\_GUI\\_Configuration\\_Guide\\_2\\_2/b\\_UCSM\\_GUI\\_Configuration\\_Guide\\_2\\_2\\_chapter\\_011111.html#task\\_B3A2111362F645AA9DA80153EDA14FA8](https://www.cisco.com/c/en/us/td/docs/unified_computing/ucs/sw/gui/config/guide/2-2/b_UCSM_GUI_Configuration_Guide_2_2/b_UCSM_GUI_Configuration_Guide_2_2_chapter_011111.html#task_B3A2111362F645AA9DA80153EDA14FA8)

---

### Question: 20

---

You need to install Cisco UCS Central Software at a customer site and set it up to manage Cisco UCS Manager.

What should you do to accomplish this goal?

- A. Register the Cisco UCS domains in Cisco UCS Central Software.
- B. Register the same Cisco UCS equipment that is managed by Cisco UCS Manager, and Cisco UCS Manager itself, in Cisco UCS Central Software.
- C. Register Cisco UCS Manager in Cisco UCS Central Software.
- D. Register Cisco UCS Central Software in Cisco UCS Manager.

---

**Answer: B**

---

Explanation:

[https://www.cisco.com/c/en/us/td/docs/unified\\_computing/ucs/ucs-central/deployment-guide/1-0/b\\_UCSC\\_Deployment\\_Guide\\_10/b\\_UCSC\\_Deployment\\_Guide\\_10\\_chapter\\_0100.html](https://www.cisco.com/c/en/us/td/docs/unified_computing/ucs/ucs-central/deployment-guide/1-0/b_UCSC_Deployment_Guide_10/b_UCSC_Deployment_Guide_10_chapter_0100.html)

You must register the Cisco UCS Domain with Cisco UCS Central before you can configure policy resolution. (THIS IS CORRECT, BUT THE ACTION IS TAKEN IN UCSM).

Register the Cisco UCS domains in Cisco UCS Central Software. NOT CORRECT. THE ACTION ISN'T TAKEN IN "Cisco UCS Central Software" ACTION IS TAKEN IN UCS MANAGER

Register the same Cisco UCS equipment that is managed by Cisco UCS Manager, and Cisco UCS Manager itself, in Cisco UCS Central Software. NOT CORRECT. EQUIPMENT IS NOT REGISTERED.

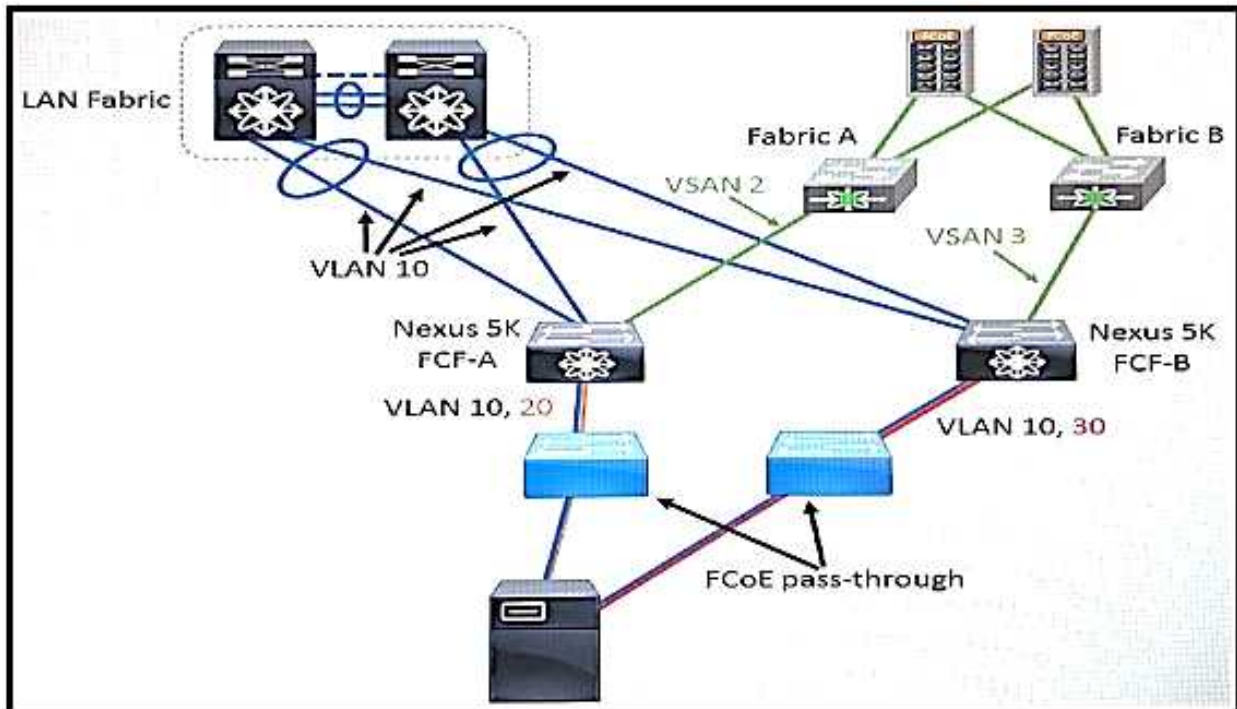
Register Cisco UCS Manager in Cisco UCS Central Software. NOT CORRECT. ACTION IS TAKEN IN UCSM Register Cisco UCS Central Software in Cisco UCS Manager.

---

### Question: 21

---

View the Exhibit.



Refer to the exhibit. Which type of FCoE topology is displayed?

- A. direct-attach
- B. remote-attach
- C. vPC
- D. FCoE with Cisco 2232 Fabric Extenders

---

**Answer: B**

---

Explanation:

Reference:

[https://www.cisco.com/c/en/us/products/collateral/switches/nexus-7000-series-switches/white\\_paper\\_c11-560403.html](https://www.cisco.com/c/en/us/products/collateral/switches/nexus-7000-series-switches/white_paper_c11-560403.html)

---

### Question: 22

---

In an environment where multiple LDAP servers are used for user authentication, which Cisco UCS Manager feature must be configured?

- A. LDAP Locale
- B. Organization
- C. LDAP Provider Group
- D. Authentication Domain

---

**Answer: C**

---

Explanation:

For implementations involving multiple LDAP databases, configure an LDAP instance.

Reference:

[https://www.cisco.com/c/en/us/td/docs/unified\\_computing/ucs/sw/sample\\_configurations/UCSM\\_1\\_4\\_LDAP\\_with\\_AD/b\\_Sample\\_Configuration\\_LDAP\\_with\\_AD/b\\_Sample\\_Configuration\\_LDAP\\_with\\_AD\\_chapter\\_010.html](https://www.cisco.com/c/en/us/td/docs/unified_computing/ucs/sw/sample_configurations/UCSM_1_4_LDAP_with_AD/b_Sample_Configuration_LDAP_with_AD/b_Sample_Configuration_LDAP_with_AD_chapter_010.html)  
[https://www.cisco.com/c/en/us/td/docs/unified\\_computing/ucs/ucs-manager/GUI-User-Guides/AdminManagement/3-1/b\\_Cisco\\_UCS\\_Admin\\_Mgmt\\_Guide\\_3\\_1/b\\_Cisco\\_UCS\\_Admin\\_Mgmt\\_Guide\\_3\\_1\\_chapter\\_0100.html#task\\_4331F325E9F249C5BEBD25E0C465309C](https://www.cisco.com/c/en/us/td/docs/unified_computing/ucs/ucs-manager/GUI-User-Guides/AdminManagement/3-1/b_Cisco_UCS_Admin_Mgmt_Guide_3_1/b_Cisco_UCS_Admin_Mgmt_Guide_3_1_chapter_0100.html#task_4331F325E9F249C5BEBD25E0C465309C)

---

### Question: 23

---

You need to automate the management of servers, networks, and storage on a Cisco UCS system, by using PowerShell.

Which tool should you use?

- A. Cisco UCS Platform Emulator
- B. Cisco UCS Python SDK
- C. Cisco UCS Automation Tool
- D. Cisco UCS PowerTool Suite

---

**Answer: D**

---

Explanation:

Reference:

[http://www.cisco.com/c/en/us/solutions/collateral/data-center-virtualization/microsoft-applications-on-ucs/brochure\\_c02-705764.html](http://www.cisco.com/c/en/us/solutions/collateral/data-center-virtualization/microsoft-applications-on-ucs/brochure_c02-705764.html)

---

### Question: 24

---

Which two statements are true concerning the role-based access control specifics of a Cisco Unified Computing System? (Choose two.)

- A. By default, user accounts expire after 90 days; a warning message will be generated 10 days prior to expiration.
- B. A locally authenticated user account is any user account that is authenticated through LDAP, RADIUS, or TACACS+.
- C. A user that is assigned one or more roles will be allowed the privileges that are consistent across all of the assigned roles.
- D. All roles include read access to all configuration settings in the Cisco Unified Computing System domain.
- E. If a user maintains a local user account and a remote user account simultaneously, the roles that are defined in the local user account override those that are maintained in the remote user account.

---

**Answer: D, E**

---

Explanation:

Reference:

[https://www.cisco.com/c/en/us/td/docs/unified\\_computing/ucs/ucs-manager/GUI-User-Guides/AdminManagement/3-1/b\\_Cisco\\_UCS\\_Admin\\_Mgmt\\_Guide\\_3\\_1/b\\_UCSM\\_Admin\\_Mgmt\\_Guide\\_chapter\\_01.html](https://www.cisco.com/c/en/us/td/docs/unified_computing/ucs/ucs-manager/GUI-User-Guides/AdminManagement/3-1/b_Cisco_UCS_Admin_Mgmt_Guide_3_1/b_UCSM_Admin_Mgmt_Guide_chapter_01.html)

---

### **Question: 25**

---

When configuring roles in the Cisco UCS C-Series, which role should be assigned for a person who must be allowed to power on the server and install a hypervisor using virtual media, but not allowed to configure other Cisco Integrated Management Controller settings?

- A. VM admin
- B. user
- C. admin
- D. read-only

---

**Answer: B**

---

**Thank You For Trying 300-175 PDF Demo**

**To try our 300-175 Premium Files visit link below:**

**<https://examsland.com/latest-exam-questions/300-175/>**

**Start Your 300-175 Preparation**

**Use Coupon **EL25** for extra 25% discount on the purchase of Practice Test Software.**