

Version: 12.0

Question: 1

Which route pattern wildcard character is used to terminate the interdigit timeout?

- A. \$
- B. !
- C. #
- D. .

Answer: C

Question: 2

When a call is attempted during a particular time of day, what determines the partitions where calling devices search?

- A. time schedules
- B. calling periods
- C. dial schedules
- D. time periods

Answer: A

Question: 3

When configuring an H.323 gateway, which configuration option can be used to set whether an incoming call is considered off the network (OffNet) or on the network (OnNet)?

- A. call classification
- B. call location
- C. device pool
- D. signaling port

Answer: A

Question: 4

When local route groups are used and a user dials 918005551212, what component is ultimately used to route the digits to the local gateway?

- A. The route list applied to the route pattern
- B. The device pool of the calling device
- C. The translation pattern
- D. The gateway or route list associated with the +.! route pattern

Answer: B

Question: 5

You are performing route pattern configuration. You need to ensure that internal extensions are automatically expanded to full external phone numbers for calling line information on outgoing calls. What should you use?

- A. calling extension expansion
- B. called number expansion
- C. external number mask of the called party
- D. external phone number mask of the calling party

Answer: D

Question: 6

The CSS on a line includes the partitions 911, internal and local. The CSS on the device includes the partitions 911, internal, local and long distance. Which CSS will be used if the phone user dials a local number?

- A. The device CSS will be used since the device CSS is always used first on an IP phone.
- B. Since the dialed digits are a match to a partition in both Calling Search Spaces the call will use both matched partitions in both Calling Search Spaces in a round-robin format.
- C. If there is both a line and device CSS the line device will only be used.
- D. The line and device CSSs will be combined and the device CSS will take precedence.
- E. The line and device CSSs will be combined and the line CSS will take precedence.

Answer: E

Question: 7

What are two characteristics of a partition? (Choose two.)

- A. Assigned to sources of call routing requests
- B. Any group of numbers with the same reachability
- C. Used in conjunction with calling search spaces to track calls to certain numbers
- D. Used in conjunction with calling search spaces to restrict outgoing calls to certain numbers
- E. Contains calling search spaces

Answer: B,D

Question: 8

Which two statements about Cisco VCS Addressing Zones are true? (Choose two.)

- A. They can be local to the Cisco VCS or can be remote.
- B. A zone is a collection of endpoints that share the same dialing behavior and bandwidth settings.
- C. They consist of traversal and nontraversal zones.
- D. They can only be local.
- E. They consist of subzones such as DNS zones.

Answer: A,B

Question: 9

Which four call coverage features are used by voice gateways? (Choose four.)

- A. call hunt
- B. Call Park
- C. Call Pickup
- D. call redirecting
- E. overlaid phone-dn
- F. basic automatic call distribution
- G. overlaid ephone-dn
- H. basic manual call distribution

Answer: A,C,F,G

Question: 10

Refer to the exhibit.

The image shows two configuration screens from the Cisco Unified CM Administration interface. The top screen is titled "Translation Pattern Configuration" and the bottom screen is titled "Route Pattern Configuration".

Translation Pattern Configuration:

- Status:** Ready
- Pattern Definition:**
 - Translation Pattern: 0.001
 - Partition: < None >
 - Description: (empty)
 - Numbering Plan: NANP
 - Route Filter: < None >
 - MLPP Precedence*: Par défaut
 - Resource Priority Namespace Network Domain: < None >
 - Route Class*: Par défaut
 - Calling Search Space: No_restriction
 - External Call Control Profile: < None >
 - Route Option:
 - Route this pattern
 - Block this pattern: Aucune erreur
 - Provide Outside Dial Tone
 - Urgent Priority
 - Route Next Hop By Calling Party Number

Route Pattern Configuration:

- Status:** Ready
- Pattern Definition:**
 - Route Pattern*: 0.0044156789453
 - Route Partition: < None >
 - Description: (empty)
 - Numbering Plan: -- Not Selected --
 - Route Filter: < None >
 - MLPP Precedence*: Par défaut
 - Apply Call Blocking Percentage
 - Resource Priority Namespace Network Domain: < None >
 - Route Class*: Par défaut
 - Gateway/Route List*: RL_TEST (Edit)
 - Route Option:
 - Route this pattern
 - Block this pattern: Aucune erreur
 - Call Classification*: Offnet
 - Allow Device Override
 - Provide Outside Dial Tone
 - Allow Overlap Sending
 - Urgent Priority
 - Require Forced Authorization Code
 - Authorization Level*: 0
 - Require Client Matter Code

When users call number 00044156789453, they have to wait for several seconds before the call is sent. Which action sends the call immediately?

A. In the translation pattern, change the CSS.

- B. In the route pattern, check the Allow Device Override check box.
- C. In the route pattern, check the Urgent Priority check box.
- D. In the translation pattern, check the Route Next Hop By Calling Party Number check box.

Answer: C

Question: 11

Which three options are valid SIP URI formats? (Choose three.)

- A. jsmith@cisco.com
- B. tel:98765@cisco.com
- C. phone:98765@cisco.com
- D. sip:12345@10.10.10.10:5060;user=phone
- E. sip:bob.cisco.com

Answer: A,B,D

Question: 12

Which two Cisco products allow the use of a dial plan with E.164, H.323, SIP, and DNS? (Choose two.)

- A. Cisco Expressway
- B. Cisco Unified Communications Manager
- C. Cisco Unified Border Element
- D. Cisco IM and Presence
- E. Cisco TelePresence Video Communication Server

Answer: A,E

Question: 13

Refer to the exhibit.

911
9.911
9.[2-9]XXXXXX
9.1[2-9]XX[2-9]XXXXXX
9.1800XXXXXXX
9.1866XXXXXXX
9.1877XXXXXXX
9.1888XXXXXXX
9.1900XXXXXXX
9011!
9011.!#

To reach an external number, a user first dials a 9. Which route pattern will be matched if a user dials the toll-free number 18005550123?

- A. 911
- B. 9.[2-9]XXXXXX
- C. 9.1[2-9]XX[2-9]XXXXXX
- D. 9.1800XXXXXXX
- E. 9.1866XXXXXXX
- F. 9.1877XXXXXXX
- G. 9.1888XXXXXXX
- H. 9.1900XXXXXXX
- I. 9011!

Answer: D

Question: 14

Refer to the exhibit.

Route Pattern Configuration Relate

Save

Status
 Status: Ready

Pattern Definition

Route Pattern*	<input type="text" value="9.1900XXXXXXX"/>
Route Partition	<input type="text" value="HQ_LD"/>
Description	<input type="text"/>
Numbering Plan	<input type="text" value="-- Not Selected --"/>
Route Filter	<input >")"="" none="" type="text" value("<=""/>
MLPP Precedence*	<input type="text" value="Default"/>
Resource Priority Namespace Network Domain	<input >")"="" none="" type="text" value("<=""/>
Route Class*	<input type="text" value="Default"/>
Gateway/Route List*	<input type="text" value="LRG_RL"/> (Edit)
Route Option	<input type="radio"/> Route this pattern <input checked="" type="radio"/> Block this pattern <input type="text" value="No Error"/>
Call Classification*	<input type="text" value="OffNet"/>
<input type="checkbox"/> Allow Device Override <input checked="" type="checkbox"/> Provide Outside Dial Tone <input type="checkbox"/> Allow Overlap Sending <input type="checkbox"/> Urgent Priority	
<input type="checkbox"/> Require Forced Authorization Code	
Authorization Level*	<input type="text" value="0"/>
<input type="checkbox"/> Require Client Matter Code	

When a user dials 919005551212, the call fails. Which change do you need to make for this call to be successful?

- A. Change the route partition.
- B. Change the gateway or route list.
- C. Change the route pattern to the correct number of digits.
- D. Change the call classification to OnNet.
- E. Change the route option.

Answer: E

Question: 15

Where do you configure a SIP route pattern?

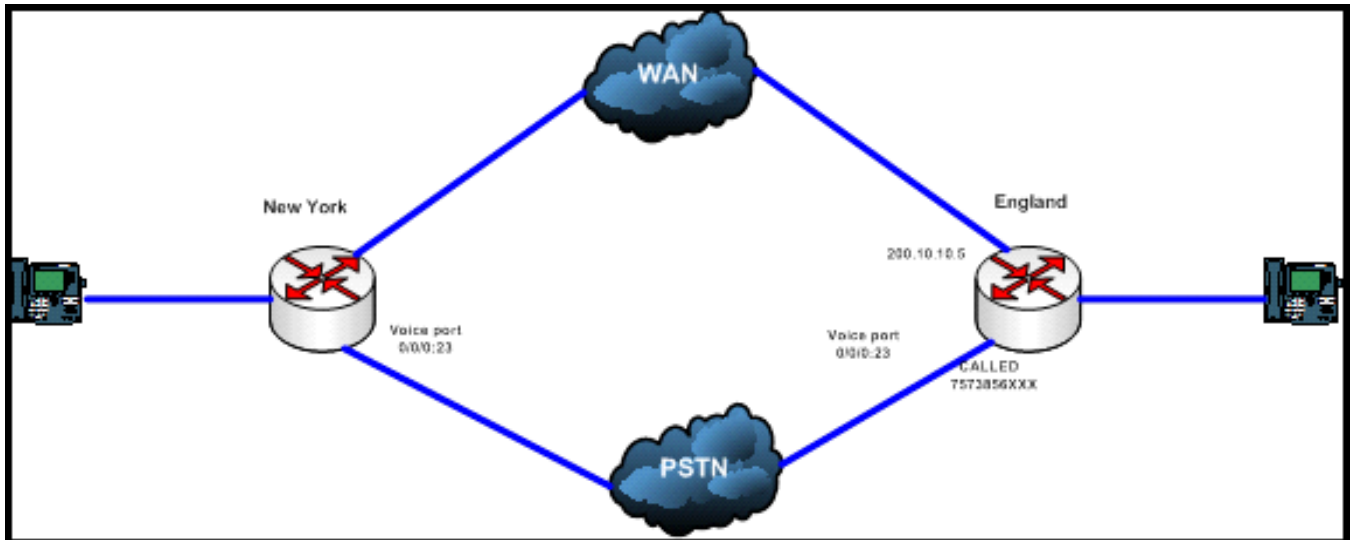
- A. Call Routing > Route/Hunt > SIP Route Pattern
- B. System > SIP Route Pattern
- C. Call Routing > SIP Route Pattern

D. Advanced Features > SIP Route Pattern

Answer: C

Question: 16

Refer to the exhibit and configuration output.



What are the two main ways from New York to call Extension 6001 in England? (Choose two.)

```
sh run | s Dial-peer
dial-peer voice 2 voip
destination-pattern 6...
preference 0
session-target ipv4: 200.10.10.5
dtmf-relay sip-notify dial-peer voice 3 pots
destination-pattern 6...
preference 1
port 0/0/0:23
prefix 757385
dtmf-relay sip-notify
```

- A. The first way is WAN.
- B. The first way is PSTN.
- C. The second way is WAN.
- D. The second way is PSTN.

Answer: A,D

Thank You For Trying 300-070 PDF Demo

To try our 300-070 Premium Files visit link below:

<https://examsland.com/latest-exam-questions/300-070/>

Start Your 300-070 Preparation

Use Coupon **EL25 for extra 25% discount on the purchase of Practice Test Software.**