

VMware

Exam 2V0-621

VMware Certified Professional 6 – Data Center Virtualization Beta

Verson: Demo

[Total Questions: 10]

Question No : 1

An administrator suspects that the MTU value for a vSphere Standard Switch is misconfigured.

Which two commands can determine the value? (Choose two.)

- A. esxcfg-vswitch -l
- B. esxcli network vswitch standard list
- C. esxcfg-vss -l
- D. esxcli network standard vswitch list

Answer: A,B

Question No : 2

What is the maximum number of snapshot instances in vSphere Replication that can be configured to recover a virtual machine at a specific point in time?

- A. 16
- B. 24
- C. 48
- D. 72

Answer: B

Question No : 3

Which two considerations should an administrator keep in mind when booting from Software Fiber Channel over Ethernet (FCoE)? (Choose two.)

- A. Software FCoE boot configuration can be changed from within ESXi.
- B. Software FCoE boot firmware cannot export information in FBFT format.
- C. Multipathing is not supported at pre-boot.
- D. Boot LUN cannot be shared with other hosts even on shared storage.

Answer: C,D

Question No : 4

Which three logs can be reviewed to troubleshoot a vCenter Server upgrade failure?
(Choose three.)

- A. vminst.log
- B. vim-vcs-msi.log
- C. pkgmgr.log
- D. vc-upgrade.log
- E. firstboot.log

Answer: A,B,C

Question No : 5

Refer to the Exhibit.

The screenshot displays the configuration for a storage device in VMware vSphere. It is divided into three main sections:

- Device Details:** Shows the Owner as NMP.
- Partition Details:** Shows the Partition Format as GPT, 1 Primary Partition, and 0 Logical Partitions.
- Multipathing Policies:** Shows the Path Selection Policy as Fixed (VMware) and the Storage Array Type Policy as VMW_SATP_EQL.

Device Details	
Owner	NMP

Partition Details	
Partition Format	GPT
▶ Primary Partitions	1
▶ Logical Partitions	0

Multipathing Policies	
▶ Path Selection Policy	Fixed (VMware)
Storage Array Type Policy	VMW_SATP_EQL

An administrator wishes to provide Load Balanced I/O for the device shown in the Exhibit.

To meet this requirement, which setting should be changed?

- A. Storage Array Type Policy = VMW_NMP_RR
- B. Path Selection Policy = Round Robin (VMware)
- C. Storage Array Type Policy = VMW_SATP_RR
- D. Path Selection Policy = MRU (VMware)

Answer: B

Question No : 6

Strict Lockdown Mode has been enabled on an ESXi host.

Which action should an administrator perform to allow ESXi Shell or SSH access for users with administrator privileges?

- A. Grant the users the administrator role and enable the service.
- B. Add the users to Exception Users and enable the service.
- C. No action can be taken, Strict Lockdown Mode prevents direct access.
- D. Add the users to vsphere.local and enable the service.

Answer: B

Question No : 7

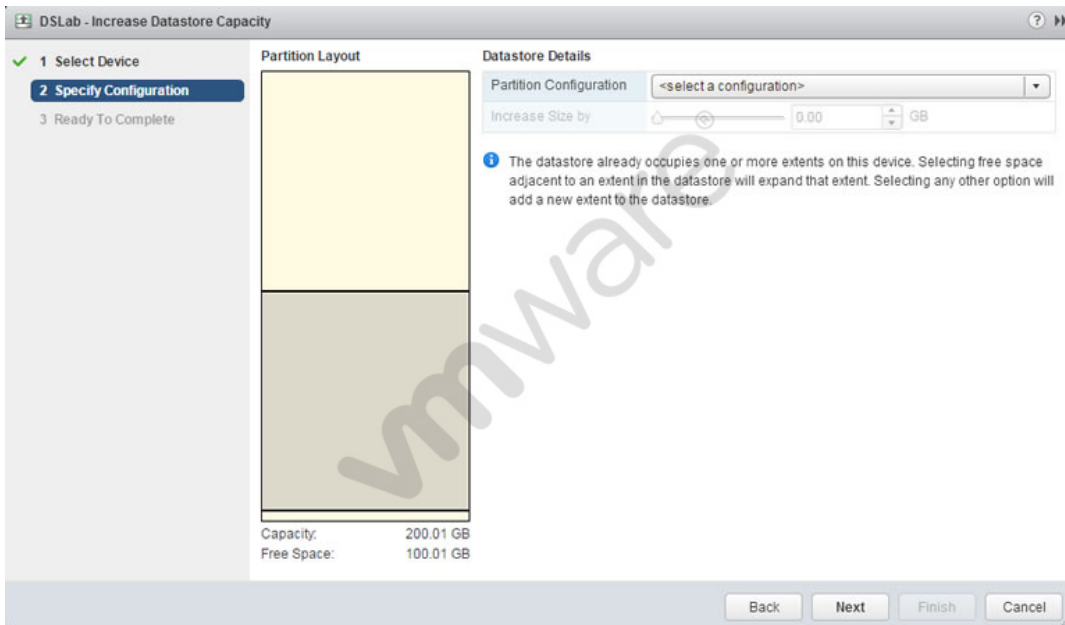
What is the minimum Virtual Hardware version required for vFlash Read Cache?

- A. Version 8
- B. Version 9
- C. Version 10
- D. Version 11

Answer: C

Question No : 8

Refer to the Exhibit.



An administrator wants to increase the capacity of a VMFS5 datastore; but the Increase Size by slider is not available, as shown in the Exhibit.

How should the administrator resolve this problem?

- A. Select a valid partition configuration from the drop-down menu.
- B. Use fdisk utility to manually resize the partition.
- C. Use the mouse to resize the partition indicated in the Partition Layout.
- D. Clicking Next will prompt for available usable space.

Answer: A

Question No : 9

Which two supported tools can be used to upgrade virtual machine hardware? (Choose two.)

- A. vSphere Web Client
- B. vSphere Update Manager
- C. vmware-vmupgrade.exe
- D. esxcli vm hardware upgrade

Answer: A,B

Question No : 10

An administrator needs to recover disk space on a previously-used thin provisioned virtual disk. The volumes where the administrator needs to recover the disk blocks are on VAAI-compliant storage arrays.

Which two actions should the administrator take accomplish this task? (Choose two.)

- A.** Perform a Storage vMotion to another volume in order to force free space recovery to occur. This recreates the volume in a new location and recovers all unused space.
- B.** Use VMware Converter to migrate the virtual machine to a new datastore. This will recreate the volumes and recover all unused space.
- C.** Issue the `vmkfstools -vmfs unmap` command within the VMFS volume directory on the ESXi host console.
- D.** Execute the `esxcli storage vmfs unmap` command.

Answer: B,D

Thank You For Trying 2V0-621 PDF Demo

To try our 2V0-621 Premium Files visit link below:

<https://examsland.com/latest-exam-questions/2V0-621/>

Start Your 2V0-621 Preparation

Use Coupon **EL25 for extra 25% discount on the purchase of Practice Test Software.**