

Cisco

010-151 Exam

Cisco Supporting Cisco Datacenter Networking Devices

Questions & Answers Demo

Version: 9.0

Question: 1

Which method is a TCP/IP-based protocol for establishing and managing connections between IP-based storage devices, hosts, and clients?

- A. FCIP
- B. iFCP
- C. iSCSI
- D. FCoE

Answer: C

Question: 2

Which method does FCIP use to enable connectivity of geographically distributed Fibre Channel SANs over IP?

- A. routing
- B. tunneling
- C. handshaking
- D. transporting

Answer: B

Question: 3

Which important feature on the front end is provided to the clients by multiple servers that access the same storage devices across the SAN?

- A. recovery
- B. redundancy
- C. resiliency
- D. security
- E. storage

Answer: B

Question: 4

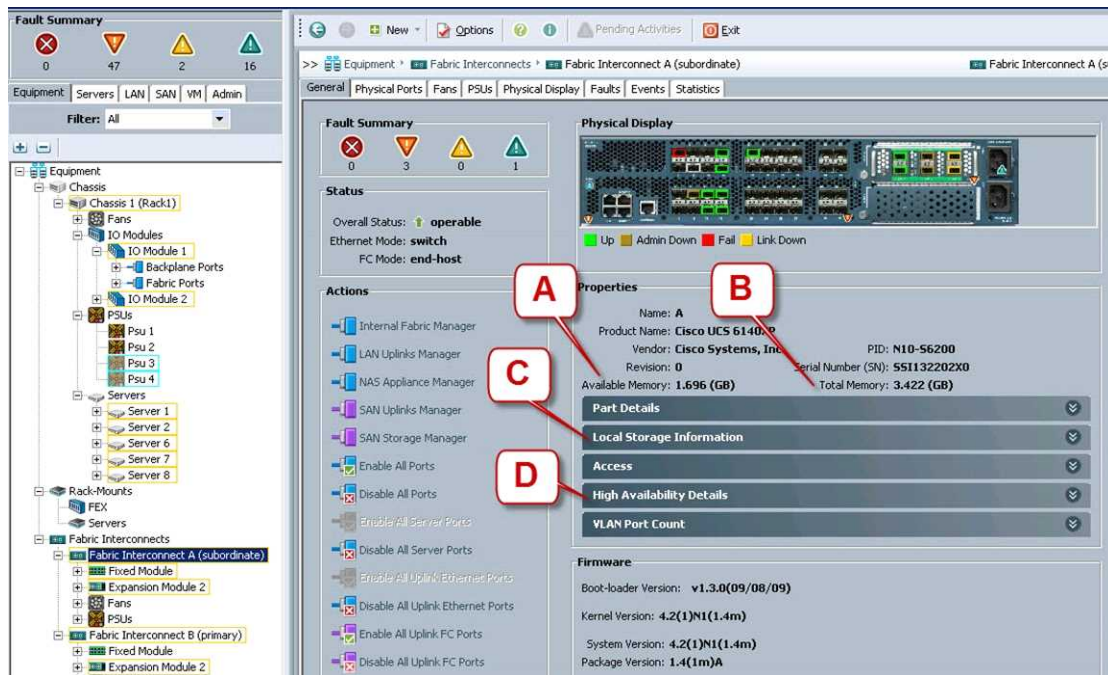
The Ethernet specification details several different fiber optic media types. What is the wire transmission speed for 100BASE-FX Ethernet?

- A. 10 Mb/s
- B. 100 Mb/s
- C. 1000 Mb/s
- D. 10000 Mb/s

Answer: B

Question: 5

Refer to the exhibit.



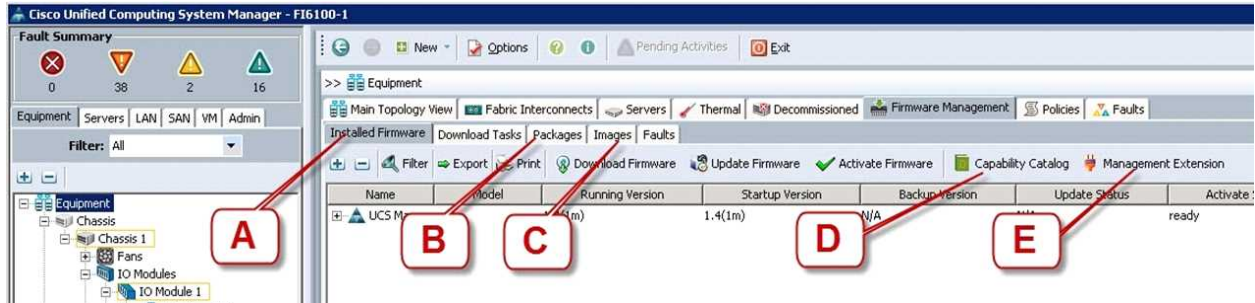
Where is the best place to see bootflash free space?

- A. A - Available Memory
- B. B - Total Memory
- C. C - Local Storage Information
- D. D - High Availability Details

Answer: C

Question: 6

Refer to the exhibit.



Where is the best place to find the B200 BIOS version used in a specific Cisco UCS Manager version?

- A. A - Installed Firmware
- B. B - Packages
- C. C - Images
- D. D - Capability Catalog
- E. E - Management Extension

Answer: B

Question: 7

What is the wire transmission speed for 100GBASE-ER4 Ethernet?

- A. 100 Mb/s
- B. 1 Gb/s
- C. 10 Gb/s
- D. 100 Gb/s

Answer: D

Question: 8

Which two statements about PCIe are true? (Choose two.)

- A. The PCIe link is built around dedicated unidirectional couples of serial, point-to-point connections known as lanes.
- B. You can install a PCI Express x8 adapter into an x4 slot.
- C. The PCIe standard is a bus-based system in which all the devices share the same bidirectional, 32-bit or 64-bit, parallel signal path.

- D. The PCIe 1.0 standard doubles the transfer rate compared to PCIe 2.0.
- E. A link that is composed of four lanes is called an x4 link.

Answer: AE

Question: 9

Which three statements about FCoE are true? (Choose three.)

- A. Allows Fibre Channel and Ethernet networks to share a single, integrated infrastructure.
- B. Encapsulates Fibre Channel frames into Ethernet frames, which allows them to run alongside traditional IP traffic.
- C. Increases capital costs due to the difficulty to manage.
- D. Consolidates I/O traffic in the data center.

Answer: ABD

Question: 10

Which cable is used to access the command-line interface of a Cisco UCS 6120XP Fabric Interconnects?

- A. KVM cable
- B. console cable
- C. Ethernet cable
- D. SFP+ Ethernet transceiver cable

Answer: B

Thank You For Trying 010-151 PDF Demo

To try our 010-151 Premium Files visit link below:

<https://examsland.com/latest-exam-questions/010-151/>

Start Your 010-151 Preparation

Use Coupon **EL25 for extra 25% discount on the purchase of Practice Test Software.**